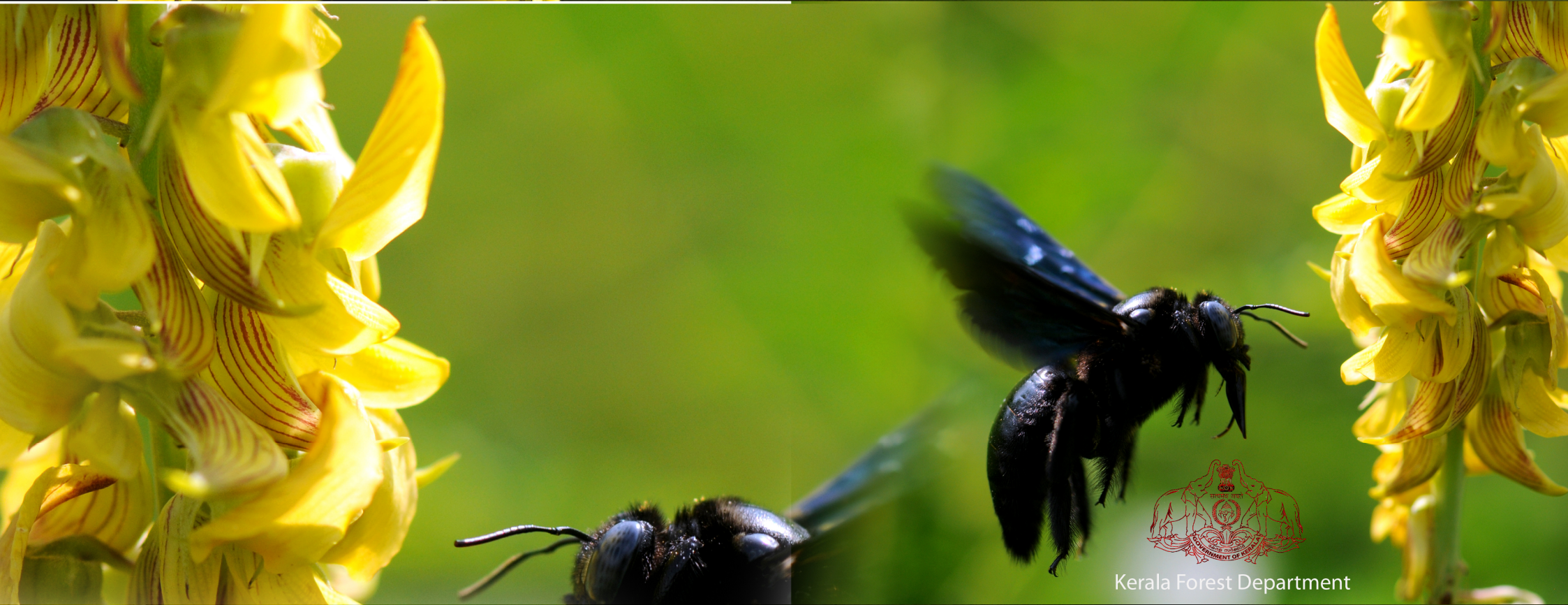


inistrationreport administrationreport administrationreport administrationreport administrationreport administrationreport



Kerala Forest Department

inistrationreport administrationreport administrationreport administrationreport administrationreport administrationreport

# **ADMINISTRATION REPORT**

## **2012-13**

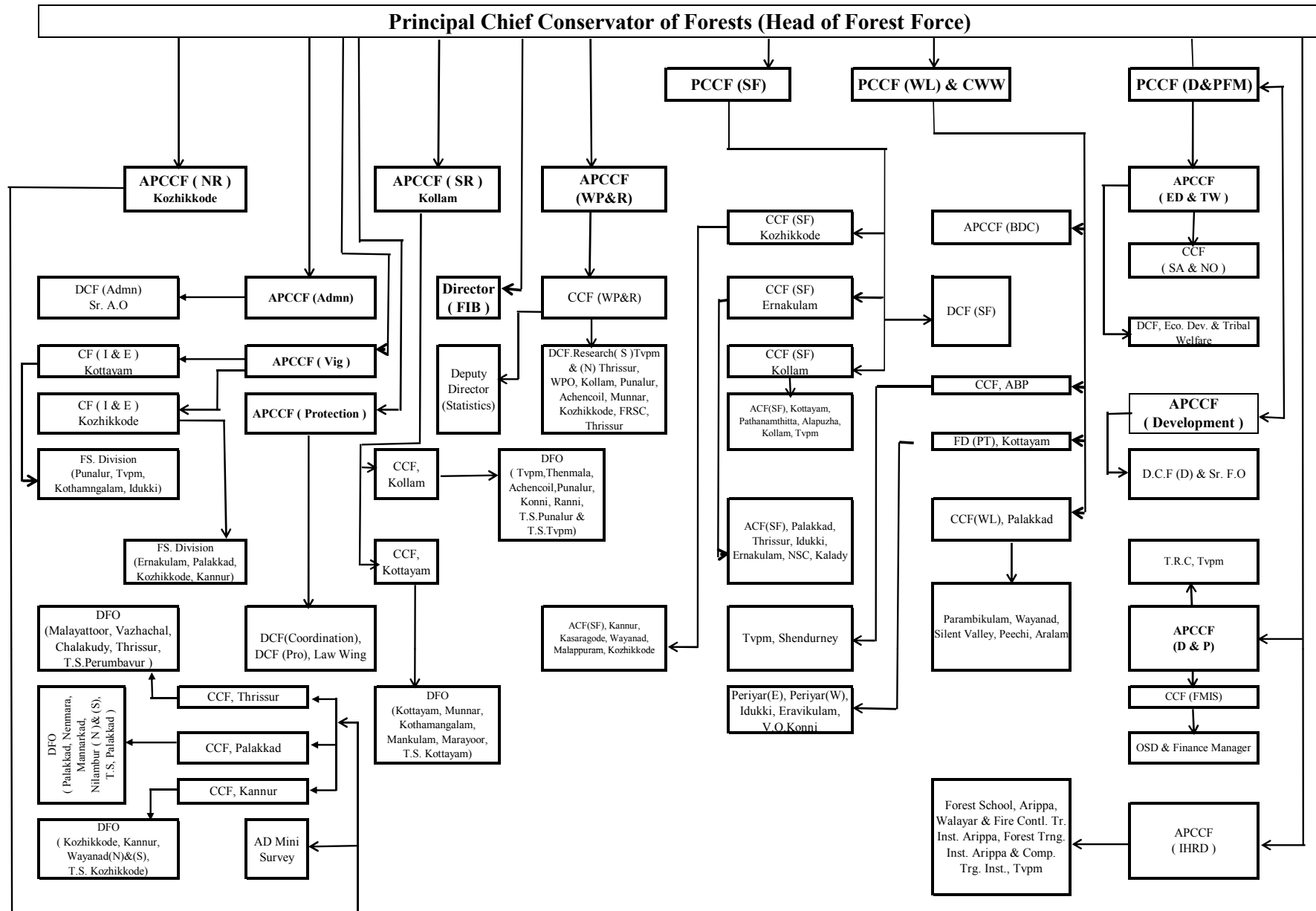


## **CONTENTS**

	<b>Pages</b>
<b>Chapter I - Introduction</b>	<b>1-21</b>
Evolution of the department	1
Major Milestones	12
Vision, Mission and Objectives	13
Statutory and Non statutory functions	14
Acts and Rules implemented by the department	15
Constitution of State Forests	16
<b>Chapter II – Organizational Set up</b>	<b>22-31</b>
Organizational structure of the department	22
<b>Chapter III- Human Resources</b>	<b>32-37</b>
Staff strength	33
Training	37
<b>Chapter IV - Functioning of the department</b>	<b>38-90</b>
Administration Wing	38
Biodiversity Wing	39
Development Wing	41
Eco Development and Tribal Welfare Wing	46
Ecologically Fragile Land Wing	50
Forest Management Information System	54
Infrastructure & Human Resource Development Wing	55
Protection Wing	65
Social Forestry Wing	68
Special Afforestation Wing	72
Vigilance Wing	74
Wildlife Wing	77
Working Plan & Research Wing	83
Forest Information Bureau	90
<b>Chapter V – Financial Results</b>	<b>91-104</b>
Revenue and expenditure	91
<b>Chapter VI –Infrastructure</b>	<b>105-107</b>
Roads	105
Buildings	105
Vehicles	105
Arms & Ammunition	107
<b>Chapter VII –Miscellaneous</b>	<b>108-114</b>
Departmental publications: Adalats, Seminar, Fairs & Exhibitions	108
Implementation of Right to Information Act	109
Forest Rights Act, 2006	111
Internal Control System	112
Grievance Redressal Cell	113
Implementation of Official Language Act	114
Computerization	114
 <b>List of Annexure</b>	 <b>115-126</b>
Annexure 1 – Organization chart	115
Annexure 2 – Division wise no. of Range Offices & Check Posts	116
Annexure 3 – Web site addresses and phone/ fax numbers of Officers	120
Annexure 4 – Name & addresses of SPIOs & Appellate Authorities under RTI Act	125

# KERALA FOREST DEPARTMENT

## ORGANISATIONAL CHART



## **Chapter I**

### **INTRODUCTION**

#### **1.1 HISTORY OF FOREST MANAGEMENT IN KERALA**

1.1.1 **Evolution of the department:-** Kerala Forest Department (KFD), is one amongst the very old departments of the state. The department has evolved over the last one and half centuries, in response to changing Forest Policies, management priorities and demands on the forests. By and large it had inherited the basic institutional framework of the colonial forest administration, with the emphasis on protection and revenue generation with limited involvement of the public. Now the policy and strategy is to conserve forest and bio-diversity with participation of people living in and around forests [Joint Forest Management (JFM)] while maintaining ecological integrity.

1.1.2 Before independence, the forests of Kerala were under 3 different administrations namely British Rule for Malabar area, the rule of King of Cochin for erstwhile Cochin State and the rule of King of Travancore for erstwhile Travancore State. Madras Forest Act 1882, Cochin Forest Regulation 1905 and Travancore Forest Act 1887 were applicable in respective areas. During the British and Princely States era, the entire western coast areas had luxuriant growth of forest vegetation. More than 90 % of the geographical area along the Western Ghats, more than 75 % geographical area along the mid land and more than 60% geographical area along the coast had luxuriant forest vegetation. The low population that existed at that point of time had for religious or other reasons protected and conserved these forests in its pristine glory. Thus, till Independence and subsequent amalgamation of the Princely States, more than 75% of the geographical area was under forest. But, after independence, by the early 1950s, encroachments in the forest areas had



taken place and it continued till the 1960s and early 1970s reducing the extent of forest very drastically.

1.1.3 When Travancore and Cochin States were reorganized on the 1<sup>st</sup> July 1949, the Department had eight Forest Divisions, viz; Trivandrum, Quilon, Shencotta (now in Tamil Nadu), Konni, Malayattur, Chalakkudy, and Thrissur. In 1950, these Divisions were brought under two Territorial circles with their Headquarters at Quilon and Trichur. When the unified Kerala was formed on the 1<sup>st</sup> November 1956, with the erstwhile Princely States of Travancore, Cochin and Malabar which was part of Madras Presidency, in terms of the States Reorganization Act, 1956, the Forest Department was also reorganized into three Territorial Circles, viz; Quilon, Chalakkudy and Kozhikkode, with fourteen forest Divisions, viz; Trivandrum, Thenmala, Punalur, Konni, Ranni under Quilon Circle, Kottayam Malayattur, Chalakkudy, Trichur under Chalakkudy Circle and Nemmara, Palakkad, Kozhikkode, Wayanad under Kozhikkode Circle. The forest boundaries of these Divisions and ranges were notified vide G.O (MS) No. 683/Agriculture-Forest-A dated 27.06. 1958.

1.1.4 **Expansion of the Department** :- In 1960, a new Development Circle with Headquarters at Thrissur was formed with newly created five special Divisions namely Teak Plantation Division Parambikulam, Liaison Division Sungam, Grass Land Afforestation Division, Pamba (Peerumedu), Hydel Division Kottayam and Tramway Division, Chalakkudy. In 1961, the Kerala Forest School based at Walayar in Palakkad District was established and added to the Development Circle. Again during 1964-65 for raising large scale economically valuable plantations of Teak and other species, after removing less valuable heterogeneous miscellaneous forest growth, four more special Divisions, viz; Kallar Valley Teak Plantation (Achencoil) Division, Teak Plantation Division, Edamalayar, Packing Paper scheme Division, Kalady and Industrial Plantation Division, Perumbavoor were created under the Development Circle.

1.1.5 In July 1965, an Industrial Plantation Circle with headquarters at Trichur was formed, having five Divisions namely Perumbavoor, Perumuzhy, Kalady, Vazhachal and Kothamangalam. Consequently, the

number of Divisions under the Development Circle was reduced to seven by excluding Chalakkudy Tramway Division and including the Forest School. Subsequently, as per G.O (MS) No. 1136/68/Agri. Dated 01.04.1968, the Development Circle was abolished and its seven Divisions were brought under the Territorial Circles. In 1971, a Vested Forest (Special) Circle having its headquarters at Kozhikkode was established with four special divisions, viz; Palakkad, Nilambur, Kozhikkode and Thalassery to manage the private forests vested in Government under the Kerala Private Forests (Vesting and Assigning) Act, 1971. In the year 1971, a Rubber Plantation Circle based at Punalur was created for raising rubber plantations for providing permanent employment to the Srilankan repatriates and it was subsequently wound up during 1976 as it was converted into a limited company called Rehabilitation Plantations Limited, Punalur.

1.1.6 There was gradual expansion of manpower and administrative units during the last fifty years. Thus, in 1972, KFD had three territorial circles (Southern, Central, and Northern) and five functional circles, i.e. (i) Working Plan and Research Circle (ii) Industrial Plantations Circle (iii) Special Circle, Kozhikkode (iv) Vigilance and Evaluation Circle and (v) Rubber Plantations Circle. In those days KFD had two Chief Conservators of Forests. Apart from the above, two more posts of Conservators were created for planning and industries in 1972.

1.1.7 In order to streamline the disposal of timber through public auctions, separate Timber Sales Divisions headed by Assistant Conservator of Forests were constituted and they started functioning with headquarters at Trivandrum, Punalur, Perumbavoor and Kozhikkode in December 1977 under the respective territorial Circles, for marketing the timber through Government timber depots. Pathanapuram Depot for Quilon Circle, Mudikkal Depot for Central Circle and Kallai Depot for Kozhikkode Circle were notified on 31.03.1973 as the Central Depots for receiving rosewood from all over Kerala and for marketing the same. At present, there are six Timber Sales Divisions, viz; Thiruvananthapuram, Punalur, Kottayam, Perumbavoor, Palakkad and Kozhikkode with 33 timber depots.

1.1.8 On 15.04.1980, Mankulam Special Division was formed for protection of 22253 Acres of land resumed under KDH (Resumption of lands) Act and handed over by the Revenue Department to Forest Department for protection. The entire land so received from the revenue department and managed thereafter in Mangulam division was notified under Section 4 of Kerala Forest Act as Reserved Forest Vide G.O (Rt) No384/2007/F&Wld, dated: 24.05.2006.

1.1.9 Due to reorganization of the Industrial Plantations Circle (IPC) and the Thrissur (Chalakkudy) territorial circle as per G.O (MS) No. 34/81/AD, dated 07-02-1981, a new territorial High Range Circle (HRC) was formed, with headquarters at Kottayam, abolishing the IPC. Thus Kottayam, Kothamangalam, Munnar and Mankulam territorial Divisions were added to the HRC while Thrissur, Chalakkudy, Vazhachal and Malayattur territorial Divisions were kept under the Central Circle, Thrissur.

1.1.10 **Formation of Social Forestry Wing:** - The Social Forestry Wing was formed during the year 1982 to implement World Bank Aided Social Forestry Project. The objectives being to supply seedlings to farmers, raising plantations along roadsides, railway lines, canal banks, community lands, institution compounds and other public lands, imparting necessary training to the farmers to adopt agro-forestry models and for carrying out extension activities. A separate Social Forestry Wing headed by a Chief Conservator of Forests, with 14 district level Social Forestry Divisions each headed by an Assistant Conservator of Forest. Each Social Forestry Division had range offices at the taluk level. Social Forestry Circle offices at Kollam and Kozhikkode were formed during the year 1984 and Circle office at Ernakulam came into existence in 1994 each headed by a Conservator of Forests. The district level Social Forestry Divisions of Trivandrum, Kollam, Pathanamthitta, Alappuzha and Kottayam are under Kollam Circle, Idukki, Ernakulam, Thrissur and Palakkad are under Ernakulam Circle and Malappuram, Kozhikkode, Waynad, Kannur and Kasaragod are under Kozhikkode Circle.



1.1.11 In 1989, the reserved forests and Vested forests falling in Palakkad and Nemmara territorial Divisions and Palakkad Vested Forest Division were amalgamated and reorganized into Palakkad, Nemmara and Mannarkkad territorial Divisions (G.O (MS) No. 121/89/F&WLD dated 26.12.1989), with compact areas of Divisions and Ranges as administrative units to bring their boundaries corresponding to the District/Taluk boundaries for better administrative convenience and forest protection. During the year 1990, another major organizational change took place in the Department when Nilambur (Territorial) division and Nilambur (Special) division were amalgamated and reconstituted, resultantly Nilambur (North) and Nilambur (South) territorial divisions were formed. The five territorial divisions were brought under the newly formed (01.04.1988) Eastern Circle with headquarters at Olavakkode (Palakkad). Similarly, in January 1990, the vested forests of Kozhikkode and Tellicherry Special Divisions and the reserved forests of Kozhikkode and Wayanad territorial Divisions were also amalgamated and reorganised into Kozhikkode, Wayanad (North), Wayanad (South) and Kannur Divisions, all with territorial status, to have compact areas of administrative units with the ultimate objective of having the Division and Range boundaries in consonance with District and Taluk boundaries respectively for better control, management and administrative convenience.

1.1.12 Consequent to the reorganization of Kasargode, Cannanore, Wayanad, Kozhikkode, Malappuram, Palakkad Revenue Districts in 1990, the forest Divisions within these Districts falling under the jurisdiction of the Northern Circle, Kozhikkode and Vested Forests Circle, Kozhikkode, were also reorganized into Northern Circle with headquarters at Kozhikkode having jurisdiction over Kozhikkode, Wayanad South, Wayanad North and Kannur territorial divisions and the newly formed Eastern Circle with headquarters at Olavakkode (Palakkad) having Palakkad., Nammara, Mannarkkad, Nilambur (North) and Nilambur (South) territorial Divisions.

1.1.13. To control the rampant smuggling of valuable timber and other forest produce to the neighbouring Thirunelveli District of Tamil

Nadu across the State borders, a new territorial forest division with headquarters at Achenkovil was formed with effect from 01.07.1993 comprising Achenkovil, Kallar and Kanayar Ranges, simultaneously abolishing the existing Kallar Valley Teak Plantations Special Division. Similarly, in view of largescale illicit felling and removal of the rare and endangered sandalwood trees and consequent depletion of the stock in the sandal reserves of Marayoor, Kanthalloor and Munnar areas, Special Sandal Division based at Marayoor was created on 08.06.2005 for ensuring effective protection of sandal from further depletion and to strengthen the administrative system. The existing Marayoor Range with Marayoor and Nachivayal forest stations under Munnar Division, and newly formed Kanthalloor range with new Kanthalloor and Vannanthura Forest Stations, was added to Marayoor Sandal Division.

1.1.14 Marayoor Sandal wood Depot had been an integral part of the Munnar Forest Division under the Range Officer, Marayoor till 08.06.2005. The activities undertaken include collection, receipt, storage, processing the sandal wood from Marayoor sandal reserves and other parts of the State and its sale through public auction. With the creation of a separate forest division namely Sandal Special Division, the Marayoor Sandal wood Depot has been brought under this new Division.

1.1.15 Thus by 2007, the Department had five territorial circles, viz; (1) Southern Circle with Thiruvananthapuram, Punalur, Konni, Ranni, Thenmala, Achencovil Divisions and Thiruvananthapuram and Punalur Timber Sales (TS) Divisions (2) High Range Circle with Kottayam, Kothamangalam, Munnar, Mankulam, Marayoor Divisions and Kottayam (TS) Division (3) Central Circle with Thrissur, Malayattoor, Chalakkudy, Vazhachal Divisions and Perumbavoor (TS) Division (4) Eastern Circle with Palakkad, Nemmara, Mannarkkad, Nilambur (North), Nilambur (South) Divisions and Palakkad (TS) Division and (5) Northern Circle with Kozhikkode, Wayanad (North), Wayanad (South), Kannur Divisions and Kozhikkode (TS) Division.

1.1.16 **Formation of Wild Life Wing:** - Wildlife Wing was constituted vide G.O (MS) No.319/84/AD dated 02.11.1984 with effect from 01.3.1985 in

accordance with the directions issued by Government of India as per letter No.6-14/82/FRY (WL) dated 23.09.1982. In the said letter, Government of India had directed to constitute a separate Wildlife Wing for scientific management of Sanctuaries and National Parks. The Government of India had also prescribed that a minimum of 33% of State's land area shall be maintained as forests out of which forests over 10% of the land areas shall be declared and managed as Protected Areas for conservation of wildlife and bio-diversity. It was in view of these directions a separate Wildlife Wing was constituted in Forest Department to ensure scientific and sustainable management of Protected Areas.

1.1.17. In 1978, a separate Field Directorate with headquarters at Kottayam, headed by a Conservator of Forests, was created for implementation of Project Tiger. A separate Wildlife Wing was also put in place with a Chief Conservator of Forests and Chief Wildlife Warden as its Head in 1985 to strengthen the wildlife protection and conservation programmes in tune with the first National Wildlife Action Plan of 1983. As on 31.03.2012 Kerala Forest Department has 5 National Parks and 17 Wildlife Sanctuaries working harmoniously towards its goal. The details are shown below.

Sl. No.	Name	Area (km <sup>2</sup> )	Formation
	<b>National Parks</b>		
1	Eravikulam National Park	97.000	1978
2	Silent Valley National Park	*237.520	1984
3	Anamudi Shola National Park	7.500	2003
4	Mathikettan National Park	12.817	2003
5	Pambadum Shola NP	1.318	2003
	<b>Wildlife Sanctuaries</b>		
1	Periyar WLS (Tiger Reserve)	** 925.000	1950
2	Neyyar WLS	128.000	1958
3	Peechi - Vazhani Wildlife Sanctuary	125.000	1958



Sl. No.	Name	Area (km <sup>2</sup> )	Formation
4	Parambikulam W L S (Tiger Reserve)	*** 643.660	1973
5	Wayanad WLS	344.440	1973
6	Idukki WLS	70.000	1976
7	Peppara WLS	53.000	1983
8	Thattekkad Bird Sanctuary	25.000	1983
9	Shendurney WLS	171.000	1984
10	Chinnar WLS	90.440	1984
11	Chimmony WLS	85.000	1984
12	Aralam WLS	55.000	1984
13	Mangalavanam Bird Sanctury	0.027	2004
14	Kurinjimala Sanctuary	32.000	2006
15	Choolannur Pea Fowl Sanctuary	3.420	2007
16	Malabar Sanctuary	**** 74.215	2009
17	Kottiyoor WLS	30.380	2011
	<b>Total</b>	<b>3211.737</b>	

\* Includes 148 km<sup>2</sup> of buffer zone added to Bhavani rangr during 2007

\*\* Includes 148 km<sup>2</sup> of Critical Tiger Core areas from Goodrical range.

\*\*\* Includes Core or Critical Tiger Habitat (390.89 km<sup>2</sup>) and Buffer zone (252.77 km<sup>2</sup>).

\*\*\*\* These areas are under the administrative control of Divisional Forest Officer, Kozhikode

1.1.18 Followed by this development, all the Protected Areas (PAs) were brought under the Wildlife Wing and separate Wildlife Divisions (WLD) were also formed to manage them. The Wildlife Divisions started functioning under the Field Directorate. In March 1992 a new circle was formed - the Agasthyavanam Biological Park (ABP) Circle for implementing a ^5 crore ABP project with the objectives of afforestation, eco-restoration, conservation of wildlife and promotion of wildlife tourism in degraded forests of Thiruvananthapuram Forest Division. Thiruvananthapuram and Shendurney WLDs (Neyyar, Peppara, and Shendurney WL) were brought

under the control of AVBP circle which had its headquarters at Thiruvananthapuram. Again with effect from 01.01.1996, a new Wildlife Circle based at Olavakkode (Palakkad) with Peechi, Silent Valley, Parambikulam and Wayanad WLDs (Peechi-Vazhani, Parambikulam, Wayanad WLS and Silent Valley National Park) was organized. In April 2006, this Circle head was upgraded as Chief Conservator of Forests. To spearhead, manage and monitor landscape level bio-diversity Conservation, rural livelihood and research activities, a Bio-diversity Conservation Cell initially headed by a Conservator of Forests and later in April 2006 by a Chief Conservator of Forests was created with office at Forest Headquarters, Thiruvananthapuram. The post has been upgraded to the level of Addl. Principal Chief Conservator of Forests since 31.12.2011.

1.1.19 Thus by 2007, the Wildlife Wing had Field Directorate with Periyar (East), Periyar (West), Munnar and Idukki WLDs, Palakkad WL Circle with Peechi, Silent Valley, Aralam, Parambikulam and Wayanad WLDs and ABP Circle with Thiruvananthapuram and Shendurney WLDs.

1.1.20 **Formation of Vigilance and Evaluation Wing :-** For co-ordinated and systematic evaluation of forestry programmes of the Department and for detecting and preventing illicit collection and transport of forest produce, a forest Vigilance and Evaluation Wing headed by a Conservator of Forests, was established in 1971 vide G.O(MS) No. 289/71/Agri. dated 23.02.1971 with five field units of Flying Squad Divisions namely Punalur, Kottayam, Ernakulam, Palakkad, Kozhikkode assisted by Flying Squad Ranges. In 1975, the post of Conservator of Forests was upgraded to the Additional Chief Conservator of Forests and in 1979 a Chief Conservator of Forests headed the wing. In 1991 the Vigilance and Evaluation Wing was further strengthened with the creation of two Vigilance and Evaluation Circles based at Kottayam and Kozhikkode with Conservators of Forests to head them. Presently there are four Flying Squad Divisions namely Thiruvananthapuram, Punalur, Idukki, Kothamangalam under Vigilance and Evaluation Circle, Kottayam and four Flying Squad Divisions, viz; Ernakulam, Palakkad, Kozhikkode and

Kannur under Vigilance and Evaluation Circle, Kozhikkode. The Vigilance wing is headed by an Addl. PCCF since 21.03.2011.

**1.1.21 Formation of Working Plan and Research Wing:** - Till 1967, preparation of working plans was undertaken under the direction of the respective territorial Conservator of Forests. With effect from 26.04.1968, a separate Working Plan Circle was formed for working plans, research, and training. In 1976, three working plan Divisions, each under the charge of a Deputy Conservator of Forests, at Kozhikkode, Thrissur and Quilon, were created for the preparation/revision of working plans. Again, on 29.04.1981, the Government created three more Working Plan Divisions each headed by Assistant Conservator of Forests in view of the backlog of Working Plan revision. The Kerala Forest School, Walayar which opened with effect from 01.11.1961 for imparting training in forestry to the Foresters and Forest Guards and the Kerala Forest School, Aripa which opened with effect from 27.05.1981 for clearing the backlog of untrained Forest Guards, were also brought under the Working Plan & Research Circle with headquarters at Thiruvananthapuram.

1.1.22 Silvicultural Research commenced in 1924 in the old Malabar, which was part of former Madras Presidency. After independence, the Silvicultural Research Division was established in 1952 with headquarters at Kodanad in Travancore-Cochin State to perform adoptive silvicultural research. It was subsequently shifted to Thrissur in 1958 and finally to Trivandrum in 1967. This Division was brought under the Working Plan & Research Circle. Till 1956, the Division was headed by State Silviculturist as in the other States. But in 1957, it was re-designated as Silvicultural Research Officer. The Division is having six research ranges for performing field research work. A Forest Resources Survey Cell under the charge of an Assistant Conservator of Forests based at Thrissur with the objective of collecting data on forest resources such as bamboos, reeds, canes, medicinal plants on a continuing basis, was created on 29.04.1981 under the Working Plan and Research Circle.

1.1.23 But in 1990-91, the Forest Schools were separated from the Working Plan & Research Circle and brought under Conservator of



Forests (Training). During the course of the implementation of externally aided Kerala Forestry Project (1998-2003) the training portfolio was redesignated as Infrastructure and Human Resource Development (IHRD). The Fire Training Centre opened at Kulamavu in 1979 under the control of the Working Plan & Research Circle, under Indo-New Zealand Technical Cooperation Programme for imparting training to the forest personnel in preventing, controlling and combating forest fires, was also attached to the Conservator of Forests (Training). These training units are now functioning under the control of Addl. Principal Chief Conservator of Forests (IHRD), Thiruvananthapuram.

**1.1.24 Formation of Forest Publicity Wing:** - Forest Publicity Wing (which was subsequently renamed as *Forestry Information Bureau*) was created in 1979. The bureau functions as a mouth piece of the Department with a view to focus public attention on the importance of forests, securing the cooperation of conservationists and tree lovers, ensuring public involvement in social forestry programmes, forest conservation and preservation; promoting public relations, publishing information on forestry and the department's achievements for the information of the public.

**1.1.25 Forest Veterinary Unit** was formed with office at Konni during 1979-80. The Forest Veterinary Officer (FVO) visits all elephant camps periodically, reporting the health status of elephants, helping DFOs in Micro chipping privately owned elephants, their suitable treatment and issue of post-mortem certificates. The FVO visits the animal rescue centres and oversees proper upkeep of animals. He also attends the veterinary matters pertaining to animals in the wild.

**1.1.26 Mini Forest Survey Unit** was established on 28.07.1982 with an Assistant Director, Survey as its head and Kozhikode as its headquarters for attending works such as survey of new forest boundaries, re-fixation of old reserved forest boundaries, re-fixation of hillmen settlements, lease holds and permanent assignments within reserved forests. Now, the wing is headed by an Assistant Director of Survey assisted by 2 Survey

Superintendents, 2 Head Surveyors, a Head Draftsman, 18 Surveyors and 8 Draftsmen on deputation from Survey Department.

1.1.27 **Forest Station System**, the first of its kind in the country, was introduced by the Department in 1988 on the Police Station model in lieu of Beat-Section system. This system was aimed at effective forest protection utilising the collective strength of staff as well as a measure to afford security to the forest protective staff. Each Forest Station is headed by a Deputy Ranger who is assisted by 4 to 5 Foresters and 12 to 16 Forest Guards depending upon the extent and nature of the forest area under each Station. At present, 104 Forest Stations in 50 Ranges under 19 Divisions are operational. Forest Stations in other Divisions are yet to be commissioned, as the process requires creation and recruitment of additional field staff, infrastructure and financial resources.

1.1.28 **Special Forest Courts** at Manjeri, Punalur and Thodupuzha were established in 1994, for trying forest offences exclusively in view of the fact that trial of forest cases in the Subordinate courts of law was taking a long time for the final disposal that resulted in practical difficulties in protection related issues.

## **1.2 Major Milestones**

- 1956 Establishment of a Development Circle at Forest Headquarters
- 1960 Establishment of a Development Circle at Thrissur for Teak and Eucalyptus Plantations in five divisions under third Five-Year Plan.
- 1961 Kerala Forest Act promulgated
- 1962 Kerala Forest School established at Walayar
- 1966 Indian Forest Service revived.
- 1971 Kerala Private Forests (Vesting & Assignment) Act 1971 promulgated
- 1972 Vigilance and Evaluation wing established
- 1973 Indian Wildlife (Protection) Act 1972 adopted by the State
- 1975 Kerala Forest Development Corporation established
- 1975 Kerala Forest Research Institute established under the Department of Science & Technology

- 1978 Project Tiger Circle formed with Headquarter at Kottayam
- 1980 Forest (Conservation ) Act 1980 promulgated
- 1981 High Range Circle created with Headquarter at Kottayam
- 1981 Industrial Plantation Circle abolished
- 1981 Forest School established at Arippa
- 1982 Social Forestry wing formed.
- 1984 Silent Valley declared as National Park
- 1985 Ministry of Environment & Forests in Government of India (GOI) established
- 1985 Wild Life wing established
- 1986 Head of KFD was designated as Principal Chief Conservator of Forests
- 1988 National Forest Policy announced
- 1991 Convener system for forestry works introduced
- 1998 State Forest Policy - guidelines issued
- 1998 Kerala Forestry Project (World Bank Aided) commenced
- 2000 Regional CCFs appointed at Kollam and Kozhikode
- 2003 Forest Management Information System Wing Established
- 2003 IHRD wing established
- 2005 EFL Wing Established.

**1.3** To capture the changing perception of forests and to create an impetus for focused efforts of all stakeholders, the following Vision, Mission and Objectives have been formulated for K F D

#### **1.3.1. Vision**

Improving and sustaining healthy living conditions through conservation of bio diversity, protection of environment, soil, water etc. and empowering forest tribes, women and other weaker sections of the society through scientific, transparent and responsible methods.

#### **1.3.2 Mission**

Conserving forests, such that ecosystem goods and services; flow to forest dependant community and to society, without compromising on ecological integrity.

#### **1.3.3 Objectives**

1. To scientifically manage the forests adopting an ecosystem



approach such that the ecosystem goods and services from the forests flow to society for posterity.

2. To conserve wildlife within and outside forests
3. To improve water regime of forest catchments so that forest provides optimum water resources to community.
4. To enhance social and cultural values of forests
5. To increase productivity of our forests and plantations
6. To manage forests on participatory and inclusive principles such that the Livelihood needs of forest dependent communities are met.
7. To conserve the rich bio-diversity in forests and support community to Conserve the bio-diversity outside forest areas.
8. To create awareness and provide facilities to public through eco-Tourism initiatives
9. To popularize tree planting among the public so as to effectively address the effects of global warming.
10. To protect and conserve migratory birds and their habitats.

#### **1.4 Statutory and Non Statutory functions**

- To conserve and expand unique and complex Natural Forests of Kerala for posterity, in particular with regard to water; Bio diversity; Extent; Productivity; edaphic, environmental, historical, cultural and aesthetic values, without affecting their ecological process.
- To increase the productivity of Forest Plantations through appropriate management interventions and use of modern technology.
- To increase the tree cover both in non forest areas and forest areas.
- To conserve, maintain and enhance the existing gene pool of the state for posterity.
- To reduce pressure on forest through appropriate interventions.
- To enhance the standard of living of the tribals and other forest dependent communities.
- To sustainably conserve and manage bio diversity-rich and sensitive ecosystems such as mangroves, sacred groves, coastal

areas, wetlands, homesteads private plantations etc. that are outside the control of Forest Department.

- To improve the Hydrological potential of forest and provide silt free clean run off.

### **1.5 Acts & Rules implemented by the department**

- Indian Forest Act, 1928
- Kerala Forest Act, 1961
- Kerala Private Forests (Vesting & Assignment) Act, 1971
- The Wildlife (Protection) Act, 1972
- The Kerala Private Forests (Vesting & Assignment) Rules, 1974
- The Kerala Forest Produce Transit Rules, 1975
- The Kerala Forest (Preservation, Reproduction & Disposal of Trees & Timber belonging to Govt. but grown on lands in the occupation of Private Persons) Rules, 1975
- The Kerala Forest Produce (Fixation of Selling Price) Act, 1978
- The Kerala Forest Produce (Fixation of Selling Price) Rules, 1978
- The Kerala Wildlife (Protection) Rules, 1978
- The Kerala Vested Forests (Management of Reserved Areas) Rules, 1980
- The Kerala Rules for Payment of Compensation to Victims of Attacks by Wild Animals, 1980
- The Forest (Conservation) Act, 1980
- The Kerala Grants & Leases (Modification of Rights) Act, 1980
- The Kerala Preservation of Trees Act, 1986
- The Environment (Protection) Act, 1986
- The Environment (Protection) Rules, 1986
- The Kerala Forest Development Fund Rules, 1989
- The Kerala Forests Resources Development Fund Rules, 1989
- The Kerala Grants & Leases (Modification of Rights) Rules, 1990
- The Wildlife (Protection) Rules, 1995
- The Kerala Forest (Prohibition of felling of trees standing on land temporarily or Permanently assigned) Rules, 1995

- The Kerala Forest (Vesting & Management of Ecologically Fragile Lands) Act, 2003
- The Kerala Captive Elephants (Management & Maintenance) Rules, 2003
- The Forest (Conservation) Rules, 2003
- The Kerala (Promotion of Tree Growth in Non Forest Land Areas) Act, 2005
- The Scheduled Tribes & other Traditional Forest Dwellers (Recognition of Forest Rights) Act, 2006
- The Scheduled Tribes & other Traditional Forest Dwellers (Recognition of Forest Rights) Rule, 2007
- The Kerala Forest (Vesting & Management of Ecologically Fragile Land) Rules, 2008
- The Kerala (Promotion of Tree Growth in Non-forest Areas) Rules – 2011.

## 1.6 Constitution of State Forests

1.6.1 The forest area under the administrative charge of Forest Department is 11309.4754 km<sup>2</sup> at the close of the year 2012-13 and forms 29.1 % of the total geographical area of Kerala State (38863 km<sup>2</sup>) against the National average of 19%. The per capita forest land of the state as per 2011 census is 0.034 ha. The total plantation area is 1523.0999 km<sup>2</sup> which accounts 13.47 % of the total forest area.

1.6.2 The distribution of forest area according to Legal Status is given below

Reserve Forest	:	9176.3016 km <sup>2</sup> (inclusive of 90.06 km <sup>2</sup> of Mankulam division and 69.095 km <sup>2</sup> of KDH in Munnar division notified under section 4 of Kerala Forest Act)
Proposed Reserve	:	295.3781 km <sup>2</sup>
Vested forest & EFL	:	1837.7957 km <sup>2</sup>
<b>Total Forest Area</b>	<b>:</b>	<b><u>11309.4754 km<sup>2</sup></u></b>

This shows that of the total forest area, 81.14 % comes under Reserve Forest, 2.61 % under Proposed Reserve, 16.25 % under Vested Forest and Ecologically Fragile Land.

1.6.3 The Circle and Division wise distribution of Forest Area (km<sup>2</sup>) according to legal status at the close of the year 2012-13 is given below

Sl. No	Division	Reserve Forests	Proposed Reserve	Vested Forests & EFL	Total	%
<b>I.Southern Circle, Kollam</b>						
1	Thiruvananthapuram	359.1240	5.8253	3.6510	368.6003	3.26
2	Thenmala	123.4320	-	7.7350	131.1670	1.16
3	Achencoil	284.3298	-	0.2082	284.5380	2.52
4	Ranni	1050.3360	7.1600	1.5680	1,059.0640	9.36
5	Punalur	280.0510	-	0.1690	280.2200	2.48
6	Konni	320.6430	11.0210	-	331.6640	2.93
<b>Total</b>		<b>2417.9158</b>	<b>24.0063</b>	<b>13.3312</b>	<b>2,455.2533</b>	<b>21.71</b>
<b>II. High Range Circle, Kottayam</b>						
7	Kothamangalam	316.8451	-	0.1576	317.0027	2.80
8	Munnar	440.4900	175.2750	2.4500	618.2150	5.47
9	Marayoor	13.9720	47.2600	0.0760	61.3080	0.54
10	Mankulam	90.0600	-	-	90.0600	0.80
11	Kottayam	627.2870	-	31.9670	659.2540	5.83
<b>Total</b>		<b>1488.6541</b>	<b>222.5350</b>	<b>34.6506</b>	<b>1745.8397</b>	<b>15.44</b>
<b>III. Central Circle, Thrissur</b>						
12	Vazhachal	413.9440	-	-	413.9440	3.66
13	Chalakudy	279.7098	-	-	279.7098	2.47
14	Malayattoor	617.2411	0.5248	-	617.7659	5.46
15	Thrissur	293.7430	-	4.3137	298.0567	2.64
<b>Total</b>		<b>1604.6379</b>	<b>0.5248</b>	<b>4.3137</b>	<b>1609.4764</b>	<b>14.23</b>
<b>IV. Eastern Circle, Palakkad</b>						
16	Mannarkkad	150.7322	-	271.7213	422.4535	3.74
17	Nilambur North	57.9196	0.0171	340.7032	398.6399	3.52
18	Nilambur South	267.3894	-	57.8888	325.2782	2.88

Sl. No	Division	Reserve Forests	Proposed Reserve	Vested Forests & EFL	Total	%
19	Palakkad	73.4100	-	162.0847	235.4947	2.08
20	Nenmara	205.5170	-	150.2104	355.7274	3.15
<b>Total</b>		<b>754.9682</b>	<b>0.0171</b>	<b>982.6084</b>	<b>1737.5937</b>	<b>15.37</b>
<b>V.Northern Circle, Kannur</b>						
21	Kozhikode	24.3998	22.9660	243.0856	290.4514	2.57
22	Wayanad North	134.0240	15.0640	65.8527	214.9407	1.90
23	Wayanad South	66.1381	6.8449	274.6810	347.6640	3.07
24	Kannur	121.3702	0	65.2014	186.5716	1.65
25	Kasargod	86.0221	0	33.7083	119.7304	1.06
<b>Total</b>		<b>431.9542</b>	<b>44.8749</b>	<b>682.5290</b>	<b>1159.3581</b>	<b>10.25</b>
<b>I. Wildlife Circle, ABP</b>						
25	Thiruvananthapuram (WL)	212.0000	-	-	212.0000	1.87
26	Shenthuruni	166.4200	-	4.5800	171.0000	1.51
<b>Total</b>		<b>378.4200</b>	<b>-</b>	<b>4.5800</b>	<b>383.0000</b>	<b>3.38</b>
<b>II. FDPT, Kottayam</b>						
27	Periyar East	618.0000	-	-	618.0000	5.46
28	Periyar West	157.0000	-	-	157.0000	1.39
29	Munnar	276.8450	-	-	276.8450	2.45
30	Idukki	130.5240	-	-	130.5240	1.15
<b>Total</b>		<b>1182.3690</b>	<b>-</b>	<b>-</b>	<b>1182.3690</b>	<b>10.45</b>
<b>III. Wildlife Circle, Palakkad</b>						
31	Parambikulam	274.1408	-	-	274.1408	2.42
32	Wayanadu (WL)	344.4400	-	-	344.4400	3.05
33	Silent Valley	154.3800	-	83.1400	237.5200	2.10
34	Peechi	122.0644	3.4200	-	125.4844	1.11
35	Aralam	22.3572	-	32.6428	55.0000	0.49
<b>Total</b>		<b>917.3824</b>	<b>3.4200</b>	<b>115.7828</b>	<b>1036.5852</b>	<b>9.17</b>
	<b>Grand Total</b>	<b>9176.3016</b>	<b>295.3781</b>	<b>1837.7957</b>	<b>11309.4754</b>	

- Note: Reconciliation process on forest area is being done. The figures furnished above are subject to minor variations in this process.



1.6.4 Classification of forest area as on 31.03.2013 is given below.

<b>Sl. No</b>	<b>Type</b>	<b>Area (km<sup>2</sup>)</b>	<b>% to total</b>
1	Tropical Wet Evergreen and Semi Evergreen	3877.4413	34.28
2	Tropical Moist Deciduous	3615.9840	31.97
3	Tropical Dry Deciduous	391.3636	3.46
4	Montane Sub-tropical Temperate sholas	386.4210	3.42
5	Plantations	1523.0999	13.47
6	Grass Lands	501.0865	4.43
7	Others	1014.0791	8.97
	<b>Total</b>	<b>11309.4754</b>	

1.6.5 The distribution of forest area according to utilization as on 31.03.2013 is given below

<b>Mode of utilisation</b>	<b>Area (km<sup>2</sup>)</b>	<b>% to total</b>
Dense Forests / Degraded Forest	8779.7574	77.63
Plantation	1523.0999	13.47
Area under lease	595.97	5.27
Forest land diverted under FCA	410.648	3.63
<b>Total</b>	<b>11309.4754</b>	

1.6.6 The species wise distribution of plantation area as on 31.03.2013 is given below

<b>Sl. No</b>	<b>Species</b>	<b>Area (ha.)</b>	<b>Sl. No</b>	<b>Species</b>	<b>Area (ha.)</b>
1	Teak	77258.904	18	Albezzia	150.570
2	Teakwood & Soft wood	15033.798	19	Anjali	583.417
3	Acacia Mangium	4186.943	20	Kambakam	453.350
4	Acacia auriculiformis	5433.646	21	Elavu	600.980
5	Eucalyptus	7518.436	22	Rubber	86.470

Sl. No	Species	Area (ha.)	Sl. No	Species	Area (ha.)
6	Cane	3469.576	23	Balsa	61.840
7	Bamboo	5563.843	24	Wattle	2122.130
8	Rosewood	94.545	25	Matti	502.910
9	Mahogany	184.330	26	Cashew	4593.868
10	Sandalwood	68.840	27	Agave	71.640
11	Other Hardwood	232.470	28	Alnus	74.350
12	Reeds	395.192	29	Sesbania	21.070
13	Cinnamon	3.740	30	Casuarina	198.870
14	Pepper	222.540	31	Silver Oak	108.530
15	Medicinal Plants	2535.325	32	Mangroves	366.289
16	Gravellia Robusta	550.728	33	Fruit bearing	142.313
17	Pine	547.576	34	Miscellaneous	18870.957
<b>Total (This area includes plantations in protected areas also)</b>					<b>152309.986</b>

1.6.7 Outturn of timber during 2012-13 is shown below

Sl. No	Species	Unit	Receipts
1	Teak	M <sup>3</sup>	26410.922
2	Rosewood	,,	305.831
3	Mahogani	,,	2.529
4	Anjili	,,	114.655
5	Kambakom	,,	21.103
6	Thembavu	,,	28.396
7	Venga	,,	4.623
8	Venteak	,,	128.862
9	Jack/ Plavu	,,	8.303
10	Karimaruthu	,,	20.107
11	Maruthu	,,	787.574
12	Irul	,,	1526.001
13	Mulluvenga	,,	205.513
14	Unnam/Chadachi	,,	69.119

<b>Sl. No</b>	<b>Species</b>	<b>Unit</b>	<b>Receipts</b>
15	Thanni	„	114.542
16	Kambakkom	„	32.829
17	Pathiri	„	15.152
18	Poovam	„	13.595
19	Kunnivaka	„	56.163
20	Karavenga	„	30.323
21	Mavu	„	26.37
22	Redcidar/ Chandanavembu	„	20.973
23	Poon/Punna/Pnnavu	„	20.087
24	Cheeni	„	42.090
25	Kulirmavu	„	187.943
26	Kumbil	„	1.493
27	Venkotta	„	73.940
28	Elavu	„	960.739
29	Pala / Mukkampala	„	19.045
30	Vaka	„	8.274
31	Akil	„	0.432
32	Manjakadambu	„	31.207
33	Poochakadambu	„	6.748
34	Kara / Rudraksham	„	14.847
35	Malaveppu	„	7.660
36	Vatta	„	44.265
37	Uravu	„	6.455
38	Miscellaneous	„	13453.746
39	Eucalyptus	MT	17944.661
40	Bamboo	MT	19006.387
41	Reeds	MT	3366.244
42	Cane	MT	69.444
43	Fire wood	MT	11439.777
44	Teak poles	Nos	78513

## Chapter II

### ORGANISATIONAL SET UP

#### 2.1 The organizational structure of the department

2.1.1 During the year 2012-13, the department was headed by the Principal Chief Conservator of Forests and Head of Forest Force (PCCF& HoFF). The Principal Chief Conservator of Forests is the Chief Advisor to the State Government on all forestry matters and is liable and responsible for the implementation of various activities and projects under Plan, Non plan and Centrally Sponsored Schemes. The Principal Chief Conservators of Forests, Additional Principal Chief Conservators of Forests and Chief Conservators of Forests assist the PCCF& HoFF in the day to day management of the department and in the implementation of various activities and Projects. The organizational structure of the department is as follows:

#### Organizational Set up during 2012-13

Offices	Officers
Office of the Principal Chief Conservator of Forests & HoFF	Principal Chief Conservator of Forests (Social Forestry)
	Principal Chief Conservator of Forests (Wildlife) & Chief Wildlife Warden
	Principal Chief Conservator of Forests (Development & Participatory Forest Management)
	Addl. Principal Chief Conservator of Forests (SR, Kollam)
	Addl. Principal Chief Conservator of Forests (NR, Kozhikode)
	Addl. Principal Chief Conservator of Forests (Development & Project)
	Addl. Principal Chief Conservator of Forests (Protection).
	Addl. Principal Chief Conservator of Forests (Vigilance).
	Addl. Principal Chief Conservator of Forests (WP&R).
	Addl. Principal Chief Conservator of Forests (Administration )
	Addl. Principal Chief Conservator of Forests (IHRD)
	Addl. Principal Chief Conservator of Forests (FMIS).
	Custodian, EFL.
	Chief Conservator of Forests (Tribal Mission)
	Chief Conservator of Forests (Tribal Rehabilitation Commissioner)
	Director, Forestry Information Bureau.

<b>Offices</b>	<b>Officers</b>
Office of the Principal Chief Conservator of Forests (SF)	APCCF (IHRD), CCF (SF), Kozhikode, APCCF (SF), Ernakulam, CCF (SF), Kollam.
Office of the Principal Chief Conservator of Forests (Wildlife) & Chief Wildlife Warden	APCCF (WP&R), APCCF (BDC), CCF (ABP), Thiruvananthapuram, FD (PT), Kottayam, CCF (WL), Palakkad.
Office of the Principal Chief Conservator of Forests (Development & Participatory Forest Management)	APCCF (D), APCCF (E&TW)
O/o Addl. Principal Chief Conservator of Forests (WP&R)	CCF (WP&R)
O/o Addl. Principal Chief Conservator of Forests (Development)	Deputy Conservator of Forests (Development), Senior Finance Officer.
O/o the Addl. Principal Chief Conservator of Forests (ED & TW)	DCF(ED &TW), CCF (S.A & N.O)
O/o the Addl. Principal Chief Conservator of Forests (Protection.)	DCF(Protection ), DCF (Co-ordination) & Law Wing
O/o the Addl. Principal Chief Conservator of Forests (Vigilance.)	CF (I & E), Kozhikode, CF (I & E), Kottayam
O/o the Addl. Principal Chief Conservator of Forests (Admn.)	DCF (Admn) & Sr. AO
O/o the Addl Principal Chief Conservator of Forests (Regional South), Kollam	CCF (SC), Kollam & CCF (HRC), Kottayam
O/o the Addl Principal Chief Conservator of Forests (Regional North), Kozhikode	CCF (CC), Thrissur, CCF (NC), Kannur, CCF (EC), Olavakkode, & AD Mini Survey



<b>Offices</b>	<b>Officers</b>
Office of the Addl. Principal Chief Conservator of Forests ( I H R D )	Kerala Forest School, Walayar, Kerala Forest School, Aripa, Fire Control Training Institute, Aripa, Forestry Training Institute, Aripa, & Forestry Training Center, Thiruvananthapuram
Office of the Chief Conservator of Forests (WP & R)	Deputy Director (Statistics) WPO-Kollam, WPO-Punalur, WPO-Achencoil, WPO-Munnar, WPO-Palakkad, WPO-Kozhikode, DCF (Research) South, DCF (Research) North, FRS Cell
Office of the Addl. Principal Chief Conservator of Forests ( FMIS )	Finance Manager.
O/o the Addl. Principal Chief Conservator of Forests (SF), Ernakulam	ACF (SF), Palakkad, Thrissur, Ernakulam, Idukki, NSC kalady.
O/o the Chief Conservator of Forests (SF), Kollam.	ACF (SF), Thiruvananthapuram, Kollam, Alapuzha, Pathanamthitta, Kottayam.
O/o the Chief Conservator of Forests (SF), Kozhikode	ACF (SF), Kasaragode, Kannur, Wayanad, Malappuram, Kozhikode.

**Name of Officers in charge of the various wings during 2012-13**

Sl. No	Office	Name	Designation	Period	
				From	To
	Headquarters Wings				
1	Principal Chief Conservator of Forests & HOFF	Shri. Raja Raja Varma, IFS	Principal Chief Conservator of Forests & HoFF	01.04.2012	31.03.2013
2	Wildlife	Shri. V. Gopinathan, IFS	PCCF (WL) & Chief Wildlife Warden	01.04.2012	31.03.2013
3	Social Forestry	Shri. S.P. Singh, IFS	Principal Chief Conservator of Forests	01.04.2012	31.01.2013
		Dr. B.S. Corrie, IFS	Addl.PCCF (Additional Charge)	31.01.2013	28.02.2013
		Dr. B.S. Corrie, IFS	Principal Chief Conservator of Forests	28.02.2013	31.03.2013
4	Development & Participatory Forest Management	Shri. N.V. Trivedi Babu, IFS	Principal Chief Conservator of Forests	04.09.2012	31.03.2013
5	Development & Project	Dr. B.S. Corrie, IFS	Addl.PCCF	01.04.2012	08.03.2013
		Shri.G.Harikumar, IFS	Addl.PCCF (Additional Charge)	08.03.2013	13.03.2013
		Shri. Shripal, IFS	Addl.PCCF	13.03.2013	31.03.2013
6	Development	Dr. K.P. Ouseph, IFS	Addl.PCCF	01.04.2013	23.01.2013
		Shri. L.K. Varshney, IFS	Addl.PCCF	23.01.2013	31.03.2013
7	Administration	Shri.G.Harikumar, IFS	Addl.PCCF	01.04.2012	31.03.2013

Sl. No	Office	Name	Designation	Period	
				From	To
8	Bio Diversity Cell	Shri. C.S. Yalakki, IFS	Addl.PCCF	01.04.2012	23.01.2013
		Shri. Nagesh Prabhu, IFS	Addl.PCCF	23.01.2013	01.03.2013
		Shri. G.J. Teggi, IFS	Addl.PCCF (Additional Charge)	01.03.2013	14.03.2013
		Shri. O.P. Kaler, IFS	Addl.PCCF	14.03.2013	31.03.2013
9	Vigilance	Shri. N. Gopinathan, IFS	Addl.PCCF	01.04.2012	30.11.2012
		Shri. L.K. Varshney, IFS	Addl.PCCF	30.11.2012	23.01.2013
		Shri. C.S. Yalakki, IFS	Addl.PCCF	23.01.2013	31.03.2013
10	FMIS	Shri. A.K Goyal, IFS	Addl.PCCF	01.04.2012	06.10.2012
		Shri. G.J. Teggi, IFS	Addl.PCCF (Additional Charge)	06.10.2012	21.01.2013
		Shri. A.K. Bhardwaj, IFS	Addl.PCCF	21.01.2013	31.03.2013
11	Working Plan & Research	Dr. B.Shivaraju, IFS	Addl. PCCF	01.04.2012	30.09.2012
		Dr. K.P. Ouseph, IFS	Addl.PCCF (Additional Charge)	30.09.2012	21.11.2012
		Shri. G.J. Teggi, IFS	Addl. PCCF	21.11.2012	31.03.2013
11	Eco-Development & Tribal Welfare	Shri. N.V. Trivedi Babu, IFS	Addl. PCCF	01.04.2012	04.09.2012
		Dr. Mehar Singh, IFS	Addl. PCCF	01.01.2013	31.03.2013
12	Protection	Shri. C.S. Yalakki, IFS	Addl.PCCF (Additional Charge)	31.03.2012	30.07.2012
		Shri. L.K. Varshney, IFS	Addl.PCCF	30.07.2012	16.01.2013
		Dr. K.P. Ouseph, IFS	Addl.PCCF	16.01.2013	31.03.2013
13	IHRD	Shri. G.J. Teggi, IFS	Addl. PCCF	01.04.2012	17.07.2012
		Shri. Amarnatha Shetty, IFS	Addl. PCCF	17.07.2012	31.03.2013

Sl. No	Office	Name	Designation	Period	
				From	To
14	Spl. Afforestation & Nodal Officer	Smt.S.K. Sudarsana Rao, IFS	Chief Conservator of Forests	01.04.2012	31.03.2013
15	Tribal Mission	Shri.Shripal, IFS	Chief Conservator of Forests	01.04.2012	02.06.2012
		Shri. E. Pradeep Kumar, IFS	Chief Conservator of Forests	02.06.2012	21.12.2012
		Shri.Shripal, IFS	Chief Conservator of Forests (Additional Charge)	21.12.2012	31.03.2013
16	Tribal Rehabilitation Commissioner	Shri. Amarnatha Shetty, IFS	Addl. PCCF (Additional charge of , TRC)	01.04.2012	31.03.2013
17	EFL	Shri. A.K Goyal, IFS	Custodian, EFL	01.04.2012	02.06.2012
		Shri. E. Pradeep Kumar, IFS	Custodian, EFL	02.06.2012	29.01.2013
		Shri. G.J. Teggi, IFS	Custodian, EFL	29.01.2013	31.03.2013
	<b>Regions</b>				
1	Regional South, Kollam	Shri. L.K. Varshney, IFS	Addl.PCCF	01.04.2012	24.07.2012
		Shri. G.J. Teggi, IFS	Addl.PCCF	24.07.2012	14.11.2012
		Shri. Jupudi Prasad, IFS	Addl.PCCF	14.11.2012	31.03.2013
2	Northern Region, Kozhikkode	Shri. W.S.Suting, IFS	Addl.PCCF	01.04.2012	15.03.2013
		Shri. D.K Verma, IFS	Addl.PCCF	15.03.2013	31.03.2013
3	Social Forestry, Kollam	Shri. K.A.Mohammed Noushad, IFS	Chief Conservator of Forests	01.04.2012	31.03.2013

Sl. No	Office	Name	Designation	Period	
				From	To
4	Social Forestry, Ernakulam	Shri. Nagesh Prabhu, IFS	Chief Conservator of Forests	01.04.2012	23.01.2013
		Shri. D.K Verma, IFS	Chief Conservator of Forests	31.01.2013	22.03.2013
		Shri. W.S.Suting, IFS	Addl.PCCF	22.03.2013	31.03.2013
5	Social Forestry, Kozhikode	Shri. Ganga Singh, IFS	Chief Conservator of Forests	01.04.2012	16.10.2012
		Shri. E. Pradeep Kumar, IFS	Chief Conservator of Forests	21.12.2012	31.03.2013



2.1.2 For the general management and administration of the forests of the State there are 5 Forest Circles headed by an officer above the capacity of Conservator of Forests. Each Circle is comprised of a number of forest Divisions. Each Forest Division is headed by a Divisional Forest Officer. Each Forest Division is comprised of a number of forest Ranges. Each forest Range is headed by a Forest Range Officer. The number of Forest Circles, Forest Divisions and Forest Ranges under various Wings of the department are given below.

<b>Category</b>	<b>Circles</b>	<b>Divisions</b>	<b>Ranges</b>
Territorial	5	25	76
Wildlife	3	11	27
Social Forestry	3	14	33
Nature Study Centre		1	1
Working Plan & Research	1	2	7
Vigilance	2	8	
Timber Sales (functional)		6	
Training	1	2	
<b>Total</b>	<b>15</b>	<b>69</b>	<b>144</b>

2.1.3 The organisational structure of the Forest Circles is given below.

<b>Territorial Circles</b>	<b>Territorial Divisions</b>	<b>Functional</b>
1. Southern Circle, Kollam	1. Thiruvananthapuram	1.Timber Sales Division, Thiruvananthapuram 2.Timber Sales Division, Punalur
	2. Thenmala	
	3. Punalur	
	4. Konni	
	5. Ranni	
	6. Achencovil	
2. High Range Circle, Kottayam	1. Kottayam	Timber Sales Division, Kottayam
	2. Kothamangalam	
	3. Munnar	
	4.Mankulam	
	5.Marayoor	

Territorial Circles	Territorial Divisions	Functional
3. Central Circle, Thrissur	1. Vazhachal	Timber Sales Division, Perumbavoor
	2. Chalakudy	
	3. Thrissur	
	4. Malayattoor	
4. Eastern Circle, Palakkad	1. Nilambur North	Timber Sales Division, Palakkad
	2. Nilambur South	
	3. Palakkad	
	4. Mannarkkad	
	5. Nemmara	
5. Northern Circle, Kannur	1. Kozhikode	Timber Sales Division, Kozhikode
	2. Wayanad South	
	3. Wayanad North	
	4. Kannur	
	5. Kasargode	
Wildlife Circles	Wild life Divisions	
1. Agasthyavanam Biological Park, Thiruvananthapuram	1. Shenduruney	
	2. Thiruvananthapuram	
2. Field Director, Project Tiger, Kottayam	1. Periyar East	
	2. Periyar West	
	3. Idukki	
	4. Eravikulam	
3. Wildlife Circle, Palakkad	1. Parambikulam	
	2. Silent Valley	
	3. Wayanadu	
	4. Peechi	
	5. Aralam	
Working Plan & Research Circle	Divisions	Working Plan Offices
Thiruvananthapuram	1. Research (South), Thiruvananthapuram 2. Research(North), Thrissur	1. Kollam
		2.Punalur
		3. Achencoil
		4 Munnar
		5. Palakkad
		6. Kozhikode
		7. Forest Resources Survey Cell
Social Forestry Circles		Social Forestry Divisions
1. Kollam		1. Thiruvananthapuram
		2. Kollam
		3. Pathanamthitta
		4. Alappuzha

	5. Kottayam
<b>Social Forestry Circles</b>	<b>Social Forestry Divisions</b>
2. Ernakulam	1. Idukki
	2. (a) Ernakulam
	(b) NSC. Kalady (Nature Study Centre)
	3. Thrissur
	4. Palakkad
3. Kozhikkode	1. Malappuram
	2. Kozhikode
	3. Wayanad
	4. Kannur
	5. Kasargode
<b>Vigilance Circles</b>	<b>Divisions</b>
Investigation & Evaluation, Kottayam	1.Flying Squad division, Punallur
	2.Flying Squad division, Thiruvananthapuram
	3.Flying Squad division, Kothamangalam
	4.Flying Squad division, Idukki
Investigation & Evaluation, Kozhikode	1.Flying Squad division, Ernakulam
	2.Flying Squad division, Palakkad
	3.Flying Squad division,Kozhikode
	4.Flying Squad division, Kannur
<b>Training</b>	<b>Institutions</b>
IHRD	1.KFS, Aripa
	2.KFS, Walayar

*2.1.4 Organizational chart of the Department and Division wise number of Range offices & Check posts are given in Annexure 1 & 2 respectively.*

*2.1.5 E-mail addresses and phone/fax numbers of officers are at Annexure 3*

### **Chapter III**

#### **HUMAN RESOURCES**

3.1 Consequent to the introduction of Indian Forest Service as an All India Service in 1968, the organizational set up of the Forest Departments was reoriented. Government of Kerala have nationalized the private forests in 1971 adding 1.83 lakhs hectare to the Forest Department necessitating more man power. The enactment of Wildlife (Protection) Act, 1972 enabled the expansion of Wildlife sanctuaries and National Parks and necessitated the formation of a separate Wildlife Wing with additional personnel. As the department implemented the World Bank Aided Social Forestry Project during 1984-1993, the World Food Programme during 1990-1999 and the World Bank Assisted Kerala Forestry Project during 1998-2003, there were compulsions to increase and strengthen the human resource of the Department and to improve their efficiency.

3.2 Kerala Forest School at Walayar, near Palakkad was established in 1961 to train Forest Guards and Foresters. Prior to this, they were trained at Forest School Coimbatore. Similarly, the Forest Rangers and the State Forest Service Officers (ACFs) are given Forestry training at the Forest Rangers Colleges and State Forest Service Colleges, under the Directorate of Forest Education of the Forest Research Institute, Dehra Dun. Likewise, the Indian Forest Service Officers undergo 2-year Diploma course in forestry (Associate of Indian Forest College) at the Indira Gandhi National Forest Academy, Dehra Dun. After technical training, the Rangers undergo one year apprenticeship, Assistant Conservators undergo 2-year departmental training and the IFS Officers, 6 months departmental training in the State to acquaint with the working of the departments of Forest, Revenue, Police, Judiciary and Industry and to study related aspects.

3.3 To improve the skill in fire management, the forest technical personnel were given training on modern methods of forest fire control at the Fire Training Centre, Kulamavu, established in 1979 under Indo-New Zealand Technical Co-operation Programme. This institution was closed

down in 1984 and the fire training responsibilities were shifted to Forest Training Institute at Arippa. Similarly, to improve the working conditions of the organization, and to enhance the working efficiency and skill upgradation of the forest personnel at various levels, under the World Bank Assisted Kerala Forestry Project, a cross section of the staff were trained in basic computer literacy, finance management Information system and data entry for preparing accounts using FMIS software, eco-development, Geological Information System, Digital Image Analysis. Besides, some technical personnel from Rangers to Principal Chief Conservator of Forests performed study tours to understand the policies, programmes, legislations, technologies in forestry, wildlife and environment followed in countries like the United States, Australia, Brazil etc.

3.4 There has been considerable change in the number as well as rank profile of the human resource of the organization during the course of the last 50 years due to diversification and increase in management activities of the Department.

3.5 **Staff strength** of various cadres as on 31.03.2013 is given below.

<b>Sl. No</b>	<b>Category</b>	<b>Sanctioned Strength</b>	<b>In Position</b>
1	Principal Chief Conservator of Forests	2	4*
2	Addl. Principal Chief Conservator of Forests	3	13*
3	Chief Conservator of Forests	11	11
4	Conservator of Forests	15	1
5	Dy. Conservator of Forest	32	22
6	Forest Tribunal	1	1
7	Joint Secretary ( Law )	1	1
8	Sr. Finance Officer	1	1
9	Sr. Administrative Officer	1	1
10	Dy. Director (Statistics)	1	1
11	Dy. Director ( Wildlife Education)	3	3
12	Asst. Director ( Survey )	1	1
13	Forest Veterinary Officer	1	1
14	Asst. Conservator of Forest	101	97
15	Finance Manager	1	0
16	Sr. Administrative Asst.	9	9
17	Administrative Asst.	12	12



<b>Sl. No</b>	<b>Category</b>	<b>Sanctioned Strength</b>	<b>In Position</b>
18	Personal Assistant	3	3
19	Range Officer	204	189
20	Research Officer	1	0
21	Public Relation Officer	1	1
22	Senior Supdt.	34	33
23	Asst. Forest Veterinary Officer	2	1
24	CI of Police	2	1
25	SI of Police	4	1
26	Survey Supdt.	2	2
27	Section Officer	1	1
28	Sheristadar cum Secretary	1	1
29	Junior Supdt.	71	71
30	Fair Copy Supdt.	8	7
31	Asst. Publicity Officer	3	3
32	Research Assistant	3	3
33	Sr.Wildlife Assistant / Wildlife Assistant	10	10
34	Documentation Officer	1	0
35	Head Accountant	74	74
36	U.D. Clerk	442	420
37	L.D. Clerk	442	415
38	Typist Clerk	1	0
39	Sel.GrTypist / Sr. Grade Typist	44	30
40	UD Typist	44	44
41	LD Typist	45	43
42	Confidential Asst.	39	33
43	Legal Assiatant	1	1
44	Head Draughtsman	2	2
45	Draughtsman	45	13
46	Dy. Range Officer	156	141
47	Librarian	1	1
48	Foresters	933	825
49	Forest Guard	2514	2167
50	Head Surveyor	2	2
51	Surveyor Gr I	17	17
52	Surveyor Gr II	49	16
53	Statistical Assistant Gr. I & II	34	34
54	Photographer cum Artist	1	1
55	Head Constable	22	4
56	Police Constable	110	21
57	Pharmasist	2	0
58	Dispencery Attendant	1	0
59	Nursing Asst.	1	0

<b>Sl. No</b>	<b>Category</b>	<b>Sanctioned Strength</b>	<b>In Position</b>
60	PT Instructor	6	1
61	Peon	420	385
62	Peon cum Sweeper	1	1
63	Daffedar	1	0
64	Attender	18	16
65	Dark Room Attender	1	0
66	Driver	253	233
67	Binder	3	1
68	Gardner	4	2
69	Traker cum Gardner	3	1
70	Gardner cum Marker	1	1
71	Cleaner	2	0
72	Scavenger/Sanitary Worker	1	1
73	Project Operator	1	0
74	Record cum Storekeeper	3	0
75	Watcher / RF Watcher / Depot Watcher	285	162
76	Muduvan Watcher	8	0
77	Night Watcher	25	16
78	Tapal Watcher	3	0
79	Watcher cum Cook	6	2
80	Rest House Watcher	1	1
81	Cook/ Asst. Cook	1	0
82	Lascar	4	2
83	Survey Lascar	11	3
84	Mahouts & Cavadies	26	19
85	Timber Supervisor	1	0
86	Pump Operator	1	0
87	Bus Cleaner	1	1
88	Lab Assistant	1	0
89	Radio Mechanic	1	0
90	Boat Driver	12	5
91	Boat Zrang	1	0
92	Boat Watcher	6	1
93	Boat Cleaner/Cleaner	3	1
94	Helper	1	0
95	Chowkeedar	1	0
96	Museum Assistant	1	0
97	Part Time Contingent Employees	207	293*
	<b>Total</b>	<b>6894</b>	<b>5958</b>

\* Ex –Cadre Posts.

**3.6 Details of employees working on contract/deputation/daily wages:** During the year, a total of 542 personnel were engaged on contract / daily wages as shown below.

- On Contract - 2 nos
- On daily wages - 540 nos

**3.7 Recruitments made during the year (cadre wise numbers) including compassionate appointments:** - The cadre wise list of recruitment made during the year is as follows.

- Range Officer - 15 nos
- Confidential Assistant - 2 nos
- L.D Clerk - 52 nos  
(Compassionate – 12 nos)
- Forest Guard - 249 nos
- LD Typist - 8 nos
- Driver - 15 nos  
(Compassionate – 1no)
- LGS - 24 nos  
(Compassionate – 2 no)
- RF Watcher - 8 nos
- Depot Watcher - 2 nos
- Night Watcher - 14 nos
- Boat Cleaner - 1 no
- PTS - 4 nos
- Lascar - 1 no
- Cook - 1 no  
(Compassionate)

**3.8 Retirements:** - During the year, seven officers of IFS Cadre, viz; three Principal Chief Conservator of Forests, two Addl. Principal Chief Conservator of Forests, one Chief Conservator of Forests & one Deputy Conservators of Forests and hundred and seventy two officers of various cadres retired from service on super annuation.

**3.9 Dismissals:** - Nil.

**3.10 Deputation:** - During the year, a Deputy Ranger and one U.D Clerk were sent on deputation.

**3.11 Posts created:** - Nil

**3.12 Supernumerary posts operated:** - No Super numerary posts were created in Kerala Forest Department during 2012-13.

**3.13 Consultants engaged:** - KPWD is the technical consultants for the maintenance of roads in konni and Punalur divisions. M/s Sutra Consulting Pvt. Ltd., IRC Village, Bhuvaneswar has been appointed for providing cosnsulting service to the JICA Project, implemented by IHRD, Thiruvananthapuram.

**3.14 Training:** - A total of 1129 officers of the department were imparted training in various Institutions during the year 2012-13 in different topics / subjects.

**3.15 Awards/rewards for meritorious service:** - During the year, 20 officers of different cadres in the Department were awarded with Chief Minister's Forest Medal for their meritorious services.

**3.16 Disciplinary proceedings against departmental personnel:** - During the year disciplinary actions were initiated against 105 officers of various cadres.

## **Chapter IV**

### **FUNCTIONING OF THE DEPARTMENT**

Kerala forest department has 15 Wings as shown below for effective and efficient management of the department and implementation of various activities and projects entrusted by the State Government and by the Central Government.

The functions and achievements of various wings of the department during the reporting year are summarised below.

#### **4.1 Administration Wing**

4.1.1 The wing is headed by the Addl Principal Chief Conservator of Forests (Administration) who inturn is responsible for general administration of Kerala Forest Department. This wing is responsible for all establishment matters such as recruitment, appointment, promotion, transfer & postings, disciplinary action, pension, payment of travelling allowances, medical claims, loans and advances, administrative control and litigations relating to establishment matters in respect of all officers in Kerala State Forest Services, Kerala State Forest Subordinate Service, Last Grade and Part-Time Contingent Services. Service matters of special categories like Wildlife Assistants / Deputy Director of Wildlife Education and officers and staff on deputation to Forest Department are also dealt within this wing. Chief Conservator of Forests (Admn.) is the authority to initiate framing of Special Rules and to propose amendments to the Rules to the Govt. from time to time. Consolidation of reports on Legislative Assembly Interpelation and Right to Information Act is being carried out in this wing.

4.1.2 During the year, remarkable achievement was made in filling the vacancies through District Offices of Kerala Public Service Commission and timely promotions. About 105 diciplinary cases were also settled.

## 4.2 Bio-diversity Wing

4.2.1 Our state is rich in flora and fauna and its land distribution pattern holds the key towards its rich biodiversity. It has several endangered and endemic species and the richness can be accounted from the table below. The Bio-diversity Cell (BDC), headed by APCCF (BDC) extends its hands towards preserving this nature's gift, in its trueself, through several social and ecofriendly activities. The APCCF (BDC) performs functions relating to conservation of Bio-diversity in areas outside Protected Areas such as Sacred Groves, Common resources, Mangroves and Wetlands thereby assisting the Chief Wildlife Warden in discharging duties regarding implementation of Wildlife Protection Act, Bio-diversity Act; etc. The APCCF (BDC) has also been assigned the duty of managing captive elephants.

4.2.2 The State being blessed with lush greenery and profound number of backwaters is also having its presence felt with rich bio-diversity. A portray of its flora and fauna along with the threats it is facing can be accounted from the table given below

Sl. No.	Group	No. of species	No of species endemic to western ghats	No. of species in different categories of IUCN Redlist
1	Plants	4689	1547	2-Ex in wild, 6-CR, 32-VU, 13-EN
2	Mammals	145	12	1 CR, 12 EN, 15 VU and 7 NT
3	Birds	502	16	10 VU and 11 NT
4	Reptiles	171	57	20 EN, 21 VU
5	Amphibians	113	61	8 are EN, 30 VU
6	Freshwater Fishes	210	189	7 CR (all endemic to Kerala), 39 EN, 29 VU, 6 NT
7	Insects	6000		

*CR – Critically Endangered, EN – Endangered, VU – Vulnerable,*

*NT – Threatened, Ex – Extinct.*

4.2.3. **Protection and Conservation of Sacred Groves:** This scheme provides financial support for the protection and conservation of selected sacred groves owned by Devaswoms, trusts and individuals for activities like habitat improvement, protection, planting, documentation of flora and fauna, awareness creation, etc. During 2012-13, 166 'Kavu' were given financial assistance ^ 28.55 lakhs. The scheme is proposed to be implemented during 2013-14 also.

4.2.4. **Vanamithra award for best practices in Bio-diversity conservation:** This scheme is implemented with the objective of recognizing exemplary service of people in the field of bio-diversity conservation. Activities such as conservation of sacred groves, mangroves, medicinal plants, agro-biodiversity etc will be considered for the award. During 2012-13, 14 individuals / institutions from each district of the state have been selected for receiving this meritorious award.

4.2.5. **Conservation of Mangroves:** This scheme is implemented with the objectives of reducing the rate of destruction of the Mangrove forest remaining along the bank of back waters and sea coast and to protect the coastal biodiversity. Mangroves are biodiversity rich areas having unique biological and ecological significance viz; Protection of sea coast, breeding and feeding ground of water dependent fauna especially fishes and shrimps, the habitat of migrating birds and water dependent birds. The scheme involves financial assistance for regeneration of mangroves, mangrove afforestation, incentive to mangrove owners and extension and awareness activities. During 2012-13 and amount to the tune of ^ 6.9 lakhs have been utilized for the above mentioned activities.

4.2.6. **Captive Elephant Management:** In Kerala, the captive elephants enjoy a special status in our culture, religious and social arena. This animal is extensively used in religious festivals and traditional 'poorams' across the state. In the light of increasing incidents of cruelties and illtreatments being meted out to the Captive elephants, the state Government have issued orders during 2012-13 vide GO(Rt) No. 3/11/F&WLD dated 21.01.2012 for the protection of elephants while in processions in connection with Temple festivals, Poorams etc. In addition



to this, as per the feed back obtained from the elephant owners, NGOs, veterinary Doctors, officers and staff of Forest and other department, the Forest Department has decided to amend the existing Captive Elephant Management Rule 2003. Accordingly a revised proposal for the amendment of Captive Elephant Management Rule 2003 was submitted to Government of Kerala and in light of the proposal Government has amended the existing rule as “The Kerala Captive Elephant Maintenance Rule 2012” vide G.O (Rt) No. 119/2012/F&WLD dated 18.12.2012.

4.2.7 In order to take stock of the Captive Elephant population in the state and to streamline its management, ‘Elephant Data Books’ containing details such as identification particulars of elephants, their health record, particulars of owners and mahouts etc. are being prepared and distributed to all captive elephant owners on proper authentication by Chief Wildlife Warden. Of the 563 verified data books received from Divisional Forest Officers, 542 were authenticated and redistributed to owners concerned. The process is still going on, as there are 702 micro chipped captive elephants in the State.

### **4.3 Development Wing**

4.3.1 The Wing is headed by a Principal Chief Conservator of Forests who discharges his duties with the help of two major sections, viz; Planning and Accounts sections.

4.3.2 Main functions of Planning Section are the preparation of Five Year Plan Proposals as well as Annual Plan of Operations and submit the same to the Government, State Planning Board and to GOI. Preparation of Demand for Grant, allocation of funds to various divisions, Circles and other Wings of the department, conducting mid- term review of the Five Year Plan and Annual Plan Proposals, submission of revised budget proposals if any required based on the trend and pace of expenditure, taking up works which require Administrative Sanction from Government, procurement and distribution of vehicles, telephones / computers and other assets of the department, allot quarters and do necessary repairs and maintenance of the same and to liaise between Government and

other wings of the department, Government of India and external funding agencies regarding financial provisions and their aid.

4.3.3 The Accounts Section is the State Level Authority in respect of the department relating to submission of monthly accounts to the Accountant General and C&AG. It is the responsibility of Addl Principal Chief Conservator of Forests (D) to ensure that the sub offices render monthly accounts in time and if not, call for explanations for defaults and delays and is the authority to design, develop and maintain internal mechanism / internal control mechanism with respect to finance, budget, Letter of Credit (LoC) and expenditure. Audit wing, attached to Accounts section, has to answer audit queries and ensures that audit queries are replied in time by various wings of the department. The section compiles and submits reports to Public Accounts Committee, Subject Committee and to various other authorities.

4.3.4 **Major Schemes:** - The major schemes implemented by Kerala Forest Department during 2012-13 are as follows.

**4.3.4.1 National Medicinal Plant Board (NMPB.)** :- This is a 100% CSS sanctioned by Govt. of India during 2008-09 by providing Grants-in-aid for in-situ and ex-situ conservation of commercial cultivation of medicinal tree species in forest area and to distribute seedlings of medicinal species to the public over the next five years (2008-2009 to 2012-13). Under this scheme, two projects sanctioned are being implemented.

**4.3.4.1 (a) Project I- Under Plantation of Medicinal Trees Species in Teak Plantation of Kerala (G.O/KE-01/2008-09):-** The project proposes to plant 200 ha of Teak Plantations with medicinal tree species preferably those which can be harvested along with the final felling of teak at 60th year. The species proposed for planting include *Caesalpinia sappan*, *Saraca asoca*, *Cinnamomum zeylanicum*, *Gmelina arborea*, *coscinum fenestratum*, *Oroxylum indicum* and *Hydnocarpus pentandra*. The project commenced on 05.08.2008 and the total amount sanctioned for this scheme is ₹126.80 lakhs. Out of ₹82.77 lakhs received so far, an amount ₹29.74 lakhs was spent during 2012-13.

#### **4.3.4.1 (b) Project II - Cultivation of Important Medicinal Tree Species of Kerala**

**(G.O/KE-2/2008-2009):-** The project proposes replacing of low yielding eucalyptus plantations, cashew planting areas and failed plantations in a total area of 500 ha during the project period. The species for planting are *Gmelina arborea*, *Aegle marmelos*, *Saraca asoca*, *Phyllanthus emblica*, *Pterocarpus santalinus*, *Oroxylum indicum*, *Premna serratifolia* and *Stereospermum colais*. The project also envisages distribution of 1.6 lakhs quality-planting materials every year to the public during the project period. The National Medicinal Plant Board (NMPB) sanctioned a total of ₹428 lakhs. Out of ₹260 lakhs received as assistance, ₹37.82 lakhs was spent during 2012-13.

**4.3.4.1 (c) Project III: - Cultivation of High Demanding Medicinal Tree Species of Kerala (Project No. CONS / KE – 02 / 2012:-** National Medicinal Plant Board, Government of India have sanctioned a project titled “Cultivation of High Demanding Medicinal Tree Species of Kerala” for ₹786.40 lakhs and have released ₹314.56 lakhs as 1<sup>st</sup> instalment. Out of this an amount of ₹16.53 lakhs was spent during 2012-13.

**4.3.4.2 XIII Finance Commission - Maintenance of Forests:** - The grant in aid for the year 2012-13 is ₹3388 lakhs and the achievement is ₹3576.86 lakhs which includes the unspent balance of 2012-13 revalidated for 2013-14 financial year.

**4.3.4.3 NABARD –RIDF Works:** - This scheme is aimed for the implementation of infrastructure facilities in the forest areas and expenditure for the same during 2012-13 were met through the following projects, viz; NABARD, RIDF XII, XV, XVI and XVII.

**4.3.4.3 (a) NABARD –RIDF XII:-** Administrative sanction for the construction of 11 roads is received vide G.O (Rt) 1097/2006/F&WLD dated 28.11.2006. Out of this, 9 roads were taken up by the department and 2 are non-starter projects. Total expenditure incurred is ₹776.75 lakhs against an approved cost of ₹920.75 lakhs (90.27 %).

**4.3.4.3 (b) NABARD –RIDF XV:-** Administrative sanction for 7 works were received vide G.O (Rt) No.291/2009/F&WLD dated 23.06.2009.

Expenditure incurred for the same is ₹289.91 lakhs against an approved cost of ₹600 lakhs (61.8 %).

**4.3.4.3 (c) NABARD –RIDF XVI:** - Administrative sanction for construction of boundary wall in 7 divisions is received vide G.O (Rt) No.529/2010/F&WLD dated 09.12.2010. The total expenditure incurred is ₹451.89 lakhs against an approved cost of ₹674.87 lakhs (74.60 %)..

**4.3.4.3 (d) NABARD –RIDF XVII:-** Government vide G.O (Rt) No. 538/2011/F&WLD dated 19.12.2011 have accorded sanction for the construction of 8 model forest stations and vide G.O (Rt) No. 149/12/F&WLD dated 19.03.2012, have sanctioned ‘Solar Powered Fencing’ in Wayanad at a project cost of ₹1655.07 lakhs. So far an expenditure of ₹145.64 lakhs has been incurred for the same (8.80%).

**4.3.4.4 Intensification of Forest Management (IFM):-** Intensification of Forest Management (IFM) is a 75% Centrally Sponsored Scheme. During 2012-13 the total Central Share was ₹219.40 lakhs and the corresponding State Share was ₹73.13 lakhs. Out of this an amount of ₹273.43 lakhs was spent during 2012-2013.

**4.3.4.5 Western Ghat Development Programme (WGDP):-** This Scheme is for the enrichment of degraded forests of Western Ghats by planting white cedar and kambakom. During 2012-13, an expenditure of ₹198.224 lakhs was incurred against an allotment of ₹220.249 lakhs.

**4.3.5.1 New Projects Launched - Nature visit at Kambamala Tea Estate** - Project for developing basic facilities for nature visit at Kambamala Tea Estate in Tea Gardens of Kerala Forest Development Corporation had been sanctioned vide GO (MS) No. 115/2012/F&WLD dated 01.12.2012 at an estimated cost of ₹50.00 lakhs under the Budget Head 4406-01-800-91 – Eco-tourism (Plan). Kerala Forest Development Corporation (KFDC) is the implementing agency of the project.

**4.3.5.2 Nature Visit at Kallar** – Project for developing basic facilities for nature visit at Kallar in Thiruvananthapuram forest division had been sanctioned vide G.O (Rt) No.566/2012/F&WLD dated 01.12.2012 at an

estimated cost of ₹50.00 lakhs under the Budget Head 4406-01-800-91 – Eco-tourism (Plan). Kerala Forest Development Corporation (KFDC) is the implementing agency of the project.

**4.3.5.3 Nature Visit at Kuruva Island** - Project for developing basic facilities for nature visit at Kuruva Island in Wayanad South forest division had been sanctioned vide G.O (Rt) No.567/2012/F&WLD dated 01.12.2012 at an estimated cost of ₹50.00 lakhs under the Budget Head 4406-01-800-91 – Eco-tourism (Plan). Kerala Forest Development Corporation (KFDC) is the implementing agency of the project.

**4.3.5.4 Elephant Care Centre at Kottur - Kappukadu** – The project for setting up of Elephant Care Centre at Kottur – Kappukad in Thiruvananthapuram had been sanctioned vide G.O (MS) No.78/2012/F&WLD dated 19.07.2012 at an estimated cost of ₹200.00 lakhs under the Budget Head 2406-02-110-46 – Elephant Centre, Kottur - Kappukadu (Plan). Kerala Forest Development Corporation (KFDC) is the implementing agency of the project.

**4.3.5.5 Orchidarium at Vagamon** – Eco-tourism Project (Orchidarium) at Vagamon in Idukki district had been sanctioned vide G.O (MS) No.81/2012/F&WLD dated 21.07.2012 at an estimated cost of ₹200.00 lakhs under B.H – 2406-01-101-82 – Orchid Garden at Vagamon (Plan). Kerala Forest Development Corporation (KFDC) is the implementing agency of the project.

**4.3.5.6 Gandhi Smrithivanam at Purakkad** – The project for establishment of Gandhi Smrithivanam at Purakkad had been sanctioned vide G.O (MS) No.86/2012/F&WLD dated 25.07.2012 at an estimated cost of ₹200.00 lakhs under B.H – 2406-02-110-47 – Gandhi Smrithivanam, Purakkad (Plan). Kerala Forest Development Corporation (KFDC) is the implementing agency of the project.

**4.3.5.7 Projects Under NABARD** – As per G.O (Rt) No.567/2012/F&WLD dated 16.01.2013 Government have accorded Administrative Sanction for four Road works in Punalur Forest Division for an amount of ₹441.75 lakhs.

#### **4.4 Eco Development & Tribal Welfare Wing**

4.4.1 The State has adopted Participatory Forest Management (PFM) as a strategy for the protection of forests and to manage the non-timber forest resources in a sustainable manner with the active participation of forest dependent communities. The institutions in territorial forest divisions are called Vana Samrakshana Samithies (VSS) and those in wildlife divisions are called Eco Development Committees (EDC). The VSSs and EDCs are the grass root level organizations where forest dependant families are members, who are participating in the planning and implementation of various forestry and community development programmes. As on 31<sup>st</sup> March 2013, 400 VSSs and 190 EDCs are functioning in the state. VSSs and EDCs are federated at forest division level into Forest Development Agencies (FDAs) which are societies registered under the Travancore – Cochin Literary, Scientific and Charitable Societies Registration Act, 1955 or the Societies Registration Act. There are 35 FDAs in the state as on 31<sup>st</sup> March 2013. Since the formation of State Forest Development Agency (SFDA), Kerala during 2010, the funds to FDAs are routed through it and the programmes and schemes implemented by FDAs are monitored by it.

4.4.2 Kerala Forest Department has implemented the following projects/schemes under Eco-Development & Tribal Welfare during 2012-13.

4.4.2.1 **National Afforestation Programme (NAP):-** This is a pioneer programme with 100% central assistance implemented through Forest Development Agencies since 10<sup>th</sup> Five Year Plan. The scheme objectives are the following:-

- (1) Providing employment opportunities to the local communities through afforestation & conservation programmes, thereby improves status of forests and creating valuable assets for the dependent communities.
- (2) Creating other durable community assets for overall development of the target communities/villages.

The afforestation programmes include planting of trees in degraded forests and adjoining areas.

Till the end of March 2013, Government of India has released ₹65.18 crores for the implementation of NAP. Upto 31-03-2013, an amount of ₹62.73 crores was utilized to afforest an extent of 36011.77 ha degraded forests. In addition to the planting activities, NAP provides funds for entry point activities, which are activities for strengthening the assets of the communities. So far, an amount of ₹7.81 crores has been utilized for this purpose which could create around 20 lakhs mandays.

**4.4.2.2 National Medicinal Plant Board Scheme:** - National Medicinal Plant Board has approved a project for creation of facilities for storage, value addition and primary processing of medicinal plants at a cost of ₹174.68 lakhs. As on 31-03-2013, the total released amount was ₹113.349 lakhs and the interest accrued for the same was ₹0.68 lakhs. This has been fully utilized and the progress report and utilization certificate were submitted to NMPB. Since no release of the fund is expected, the NMPB has been requested to treat this project terminated.

**4.4.2.3 National Bamboo Mission Scheme:-** With a view to make available good quality bamboo in the State, the National Bamboo Mission has approved a scheme for raising good quality bamboo seedlings and planting the same with a total project cost of ₹122.24 lakhs. The amount available for expenditure during 2012-13 was ₹54.56 lakhs out of which ₹5.28 lakhs was the interest accrued. By the end of the financial year, the amount has been fully utilized. During 2012-13, about 14 lakhs numbers of bamboo seedlings were generated for distribution and bamboo plantation has been raised in an area of 387 ha. As the funds are fully utilized, the project is treated as terminated.

**4.4.2.4 Green India Mission:** - The Green India Mission aims to address key concerns related to climatic change in the forestry sector namely; Adaptation, Mitigation, Vulnerability, and Eco system services. The year 2011-12 was considered as the Bridge Plan period and Government of India have approved the Bridge Plan for ₹194.60 lakhs for Kerala to be implemented by seven FDAs in three landscapes with components shown



below. As the fund was released by GOI at the fag end of the financial year 2011-12, it was revalidated for utilizing during 2012-13. The total expenditure at the end of the financial year 2012-13 is ^117.30 lakhs.

#### **Components of the Projects**

- 1) Conducting workshops to Stake Holders to mobilize people in the GIM programme.
- 2) Nursery development.
- 3) Soil and Moisture Conservation works including water harvesting structures.
- 4) Entry Point Activities.
- 5) Micro planning.
- 6) Landscape survey to get baseline information for perspective plan of GIM.
- 7) JFMC outreach activities.

**4.4.2.5 Schemes for the benefit of Scheduled Tribes living within the forests:** - The Scheduled Tribe Development Department (STDD) sanctioned various welfare schemes to be implemented through Forest Development Agencies for the benefit of tribal villages in and around forest areas. The schemes are being implemented through various Forest Development Agencies, viz; South Wayanad, North Wayanad, Peechi, Munnar, Mannarkkad, Parambikulam & Periyar Tiger Reserve (East). The activities under various schemes include the development in the field of agriculture, animal husbandry, education, health, self employment generation programme, etc. During 2012-13, three projects were sanctioned by the STDD, one for the development of Edamalakkudy in Munnar with a financial outlay of ^10.35 crores and another two projects in Mankulam FDA with a financial outlay of ^10.65 lakhs and the funds are ordered to be transferred to the Forest Development Agencies.

**4.4.2.6 Insurance Scheme to Tribal and others:** - An insurance scheme is implemented for tribals/SC/ST & others residing in and around forest area, covering risks of death, hospitalization expenses, transportation to hospital and loss of hut due to natural calamities / attack of wild animals in collaboration with M/s. United India Assurance Company, Ltd. with a

total premium of ^6.75 lakhs. The period of the insurance scheme is from 21-06-2012 to 20.06.2013.

**4.4.2.7 Eco-tourism:** - There are at present 64 functional eco-tourism points managed by the department. The service charges collected from the visitors are deposited in the River Forest Protection Fund (RFPF) and are utilized for maintaining the visitor areas garbage-free, for taking care of visitor security and for wages to guides engaged in the spot. The department of Tourism and Directorate of Eco-tourism are providing financial assistance to a few ecotourism projects implemented through Forest Department. During 2012-13, ^703.15 lakhs and ^877.43 lakhs were collected from tourists as entrance fees and service charges respectively, where ^525.01 lakhs was expended from RFPF for maintenance and wages.

**4.4.2.8 Vanasree Units:** - Thirty Vanasree Units are functioning in various divisions to enable the Vana Samrakshana Samithies to sale processed and semiprocessed non timber forest products collected by Adivasis from forest areas. The profits from these outlets are being ploughed back to the MFP collectors through the VSS. The public will also be getting unadulterated and genuine forest products from these outlets. The details of these outlets are shown below

Sl. No.	Division	Location
1	Thiruvananthapuram	Forest Headquarters, Thiruvananthapuram
2		Mobile Vanasree Unit
3	Thiruvananthapuram Wildlife	Neyyar
4	Achenkoil	Manalar - Kumbhavurutty
5	Thenmala	Palaruvi
6	Punalur	Ayur
7	Konni	Konni
8	Ranni	Kochandi
9	SF, Alappuzha	Kommadi
10	Malayattoor	Kodanad
11	Malayattoor	Paneliporu
12	Malayattoor	Thommankuthu

<b>Sl. No.</b>	<b>Division</b>	<b>Location</b>
13	Malayattoor	Mobile Vanasree Unit
14	Chalakyudy	Chalakyudy
15	Vazhachal	Athirappally
16	Vazhachal	Vazhachal
17	Parambikulam, Wildlife	Parambikulam
18	Parambikulam, Wildlife	Malampuzha
19	Parambikulam, Wildlife	Anappady
20	Silent Valley National Park	Mukkali
21	South Wayanad	Soochippara
22	North Wayanad	Mananthavady
23	North Wayanad	Plamoola
24	North Wayanad	Thrissilery
25	North Wayanad	Kalindi
26	Nilambur North	Aruvakkode
27	Nilambur South	Nedumgayam (Manjeri)
28	Wayanad Wildlife	Muthanga
29	Marayoor	Marayoor
30	Schendurumy Wildlife	Schendurumy

#### **4.5 Ecologically Fragile Land (EFL) Wing**

4.5.1 The Kerala Forest (Vesting and Management of Ecologically Fragile Lands) Act, 2003 (Act 21 of 2005) is an Act to provide for the vesting in the Government of Ecologically fragile land in the State of Kerala and for the management of such lands with a view to maintain ecological balance and conserving the bio-diversity. The Act got the assent of Hon'ble President of India on 25th April, 2005 and was notified on 3rd of May, 2005. The Act is deemed to have come into force on the 2nd day of June, 2000. Before the enactment of the Act, The Kerala Forest (Vesting and Management of Ecologically Fragile Lands) Ordinance (06/2000) was promulgated; this came into effect on 02.06.2000. Till the enactment of the Act 21 of 2005, the Principal Chief Conservator of Forests was the custodian of ecologically fragile lands. From 23.11.2005 onwards a

separate wing was established and a Chief Conservator of Forests was posted as the custodian of EFL.

4.5.2 As on 31.03.2013, the State has an extent of 141.5648 km<sup>2</sup> declared as ecologically fragile land. The district wise details are shown below.

<b>Sl. No</b>	<b>District</b>	<b>Area (km<sup>2</sup>)</b>
1	Thiruvananthapuram	8.8176
2	Kollam	2.7372
3	Idukki	12.4746
4	Thrissur	0.7577
5	Palakkad	51.5802
6	Malappuram	12.6513
7	Kozhikode	15.4499
8	Wayanad	28.1480
9	Kannur	4.9843
10	Kasargode	3.9641
	<b>Total</b>	<b>141.5649</b>

4.5.3 Ex-owners of lands vested under section 3 of the Ordinances are eligible to apply before the Custodian, Ecologically Fragile Lands for review of notification under section 19 (3) (b) of the Act. 345 applications were received till 31.03.2012 of which 76 applications have been disposed. The rest of the applications are at various stages of disposal. If the application is rejected by the Custodian, Ecologically Fragile Lands the ex-owner can approach the Tribunal constituted under section 9 of the Act. If the application is rejected by the Honorable Tribunal, appeal can be filed before the Honorable High Court.

4.5.4 The Kerala Forest (Vesting and Management of Ecologically Fragile Lands) Rules, 2007 has been formed under section 18 of the Act and notified in gazette. As per G.O (P) No.35/2007/F&WLD dated 08.06.2007 tribunals have been constituted at Kozhikkode, Palakkad, Kottayam and Kollam districts under section 9 of the Act. The First Additional District Court Judge has been designated as the Tribunal.

4.5.5 The Kerala Forest (Vesting and Management of Ecologically Fragile Lands) Tribunal Rules, 2007 have been framed as per G.O (P) No.64/2007/F&WLD dated 10.10.2007 and notified in gazette. The details of cases in the four tribunals are detailed below.

<b>Sl. No</b>	<b>Tribunal</b>	<b>Number of cases</b>
1	Kollam	5
2	Kottayam	Nil
3	Palakkad	126
4	Kozhikode	25

4.5.6 Government have constituted the Advisory Committee under section 15 of the Act to recommend land to be vested under section 4 of the Act as per G.O (P) No.68/2007/F&WLD dated 12.11.2007.

4.5.7 Some of the ex-owners of the lands vested under section 3 of the Act have filed cases before the Honorable High Court against the vesting of land and challenging the constitutional validity of the Act. As on 31.03.2012, 165 cases were pending before the Honorable High Court.

4.5.8 The Government had enacted The Kerala Forest (Vesting and Management of Ecologically Fragile Lands) Amendment Act, 2009 ( Act 32 of 2009), for a speedy and transparent disposal of the applications of ex-owners having extent of land less than 2 hectares as on 02.06.2000 and whose lands have been vested under section 3 of the Act. This Act came into force on 20.08.2009. As per section 10 A of this Act, notwithstanding anything contained in section 10, if any owner of the land which has been notified under section 3 and having an extent of not more than two hectares as on 2nd day of June, 2000 has any dispute as to whether such land is an ecologically fragile land or not, may file an application before the Principal Chief Conservator of Forests for the settlement of such dispute. The last date for submission of application under this section was 19.02.2010. 1050 applications were received under this section. Government have constituted "The Ecologically Fragile Land Claim

Dispute Redressal Committee” in each forest division under section 10 B, for the settlement of disputes under section 10A of the amended Act and notified it in gazette. The following are the members of the committee constituted under section 10 B of the Act.

- ❖ Local Divisional Forest Officer/Wildlife Warden, who shall be the Chairman of the Committee
- ❖ Working Plan Officer, who shall be the Convenor of the Committee
- ❖ Two scientists from the distinct Research Institutes coming under the Kerala State Science, Technology and Environment Council
- ❖ The Member of the Legislative Assembly of the area comprising the place which is subjected to inspection
- ❖ The president of the Village Panchayat of the area comprising the place which is subjected to inspection
- ❖ The Agriculture Officer not below the rank of a Deputy Director or a person nominated by him of the area comprising the place which is subjected to inspection
- ❖ Revenue Officer not below the rank of a Revenue Divisional Officer or a person nominated by him of the area comprising the place which is subjected to inspection.

4.5.9 A meeting was conducted with honourable Chief Minister as the Chair Person on 03.11.2011 to discuss about the problems pertaining to EFL lands in Idukki district and the following decisions were taken

- 1) Inorder to avoid the inclusion of agriculture land as EFL, before the notification of a land under section III (1) of the act, a team including the Divisional Forest Officer (convenor), MLA of that constituency, the Panchayat President of the panchayat concerned and the District Agricultural Officer must visit the land and make sure that it doesn't comes under agricultural land.
- 2) At present the EFL custodian is having right to inspect on complaints pertaining to those lands which comes under the EFL ordinance. This right has to be extended to those lands which have been notified under section XIX (3) also.

3) Application for submission as per 10A of amendment Act - 2009 has to be extended once again.

4.5.10 The Kerala Forest (Vesting and Management of Ecologically Fragile Lands) Amendment Rules, 2009 has been framed to carry out the proposals of the Amendment Act and notified as per S.R.O.NO.1013/2009 and published in extraordinary gazette No.2205 dated 26.11.2009. Action is on progress for amending these rules once again incorporating the decision taken on the meeting of 3-11-2011.

#### **4.6 Forest Management Information System Wing (FMIS)**

4.6.1. This Wing was established as part of Kerala Forestry Project under '*strengthening*

*sector management*' with the objectives of building the capacity of staff to use and manage information, facilitating flow of information within KFD units, mainstreaming the use of IT, particularly DBMS, GIS, expanding internet connectivity and increasing the availability of key reference data sets such as an updated forest inventory to users within the KFD. Presently the Wing is trying to bring out improvements in the management functions of the department through efficient and effective application of various modules already developed besides updating the web-portal of the department with all latest information. Now Modules such as Offence module, Court case module and fire monitoring module has been made online, in which data entry is being made. The KFD has launched 11 circle websites for uploading circle level information by the circle officials themselves. More stress has been given on use of ICT by directing all offices to make most of the communication through e-mail including submission of documents as scanned attachments to e-mails. The Wing has been imparting training to the officers of the department in handling computer applications for improving efficiency in developing up-to-date Geo-database of forests of Kerala using remote sensing data for various purposes and developing maps of forest areas for the use of KFD officials.

4.6.2 Procurement of Computers & accessories: - During 2012-13, the wing purchased 280 Desktop & 80 Laptop PCs, 2 Virtual desktops, 2



Scanners, 15 UPSs, 2 DLP projectors, 8 Networking switches, 2 Servers, 2 Digital GPSs, 120 GPSs, 50 Digital cameras, 36 Camera traps, 60 solar chargers etc and distributed to various offices of the Department.

#### **4.7 Infrastructure & Human Resource Development (IHRD) Wing**

4.7.1 A training wing in the Forest Department was created during 1990 for training the department personnel, in order to improve their efficiency. This wing was headed by a Conservator of Forests to begin with which was subsequently upgraded to the status of Chief Conservator of Forests vide G.O (Rt) No. 411/2004/F&WLD dated 04.10.2004. Vide G.O (Rt) No. 56/11/2011/GAD dated 23.07.2011, the post was upgraded to Additional Principal Chief Conservator of Forests (IHRD).

4.7.2 There are two Forest Schools, one at Walayar and the other at Arippa. Kerala Forest School, Walayar was opened vide G.O (MS) 1220/61/ Agri dated 05.12.1961 for imparting training to the Foresters and the Forest Guards. Kerala Forest School, Arippa was established vide G.O (MS) 167/81/ Forest dated 27.05.1981 for imparting training to Foresters and Forest Guards making use of the existing facilities available in the training school of the Kerala Forest Development Corporation at Arippa. In addition to the above two training schools, a Forest Training Centre (FTC) attached to the office of the Addl. Principal Chief Conservator of Forests (IHRD) at Rajiv Gandhi Nagar (near PTP Nagar), Thiruvananthapuram has also been functioning with well equipped Computer Lab for training the staff in FMIS modules, SPARK etc. Hostel facilities for accommodation are also available in the said training centre. In-service training programmes for various categories of staff and officers working in the Kerala Forest Department are organized in the Forest Training Centre regularly.

4.7.3 **Induction training** is being imparted for a period of one year to Foresters and nine months to Forest Guards at Kerala Forest School, Arippa as well as Kerala Forest School, Walayar. An average of about 140 Guards and about 100 Foresters can be trained in a year by utilizing the facilities available at present. For both Foresters and Forest Guards,

Forestry related subjects such as Forest Botany, Forest Mensuration, Forest Survey, Forest Engineering, Wildlife Management, Forest Acts and Rules etc. are taught in class rooms besides imparting practical training in the campus and also through study tours. During study tours, the practical aspects of Forestry are given top most priority. Detection, registration and successful prosecution of Forest cases, silvicultural operations including regeneration techniques, timber operations including sale of timber are also taught. Physical fitness sessions and games are integral part of the curriculum. On amending the recruitment rules, induction training at forester level will be stopped as there is no recruitment at this level.

4.7.4 Two weeks refresher courses for frontline staff (Deputy Rangers/Foresters and Forest Guards) are being conducted at KFS Walayar and KFS Arippa sponsored by the Ministry of Environment and Forests (MoEF), Government of India through Directorate of Forestry Education, Dehradun. During 2012-13, 235 officials were given training.

4.7.5 **In-service Training:** - In-service training programmes are regularly organized at Forestry Training Centre, Rajiv Gandhi Nagar and Forest Training Centre, Arippa. During 2012-13, 1723 mandays of training was imparted in these centres to the following categories of staff.

- Assistant Conservator of Forests
- Forest Range Officers
- Deputy Rangers / Depot Officers
- Foresters
- Forest Guards
- Senior / Junior Superintendents / Head Accountants
- Personal Assistants / Confidential Assistants
- UD/LD Clerks
- Drivers
- Last Grade Employees

4.7.6 **STP Trainings:** - The department has actively utilized the opportunities on training programmes as per the State Training Policy, being organized by Institute on Management in Government at its Centres at Thiruvananthapuram, Kochi and Kozhikode and 115 officers attended these training programmes during 2012-13.

**4.7.7. Deputation of IFS Officers / State Service Officers for trainings / workshops:** - During the report year, 24 officers were deputed to various training courses, sponsored by MoEF and other Ministries of GOI and State Government in different institutions in the country.

4.7.8 The Range Officers were trained by utilizing the services available in the Rangers Training College, Coimbatore. The curriculum is modified at present. The Rangers recruited from among the B.Sc (Forestry) graduates are given one year induction training through Kerala Forest School, Aripa.

4.7.9. During the year 2012-13, 1129 training programmes were conducted for different categories of departmental officers are given below.

Sl. No	Institute	Course	Category	No. of Participants	No. of Days trained
I	IHRD, PTP Nagar, Thiruvananthapuram	General Refresher Course	LD Clerks	26	6
			Foresters	24	6
		Training on UNICODE Malayalam	Typist	15	7
		SPARK, FMIS, E – mail etc.	Forest Range Officers	8	6
		Web designing and Website	Frontline Staff	34	1
				11	1
		Basics of Computer Application	Ministerial Staff	26	10
				29	10
		Training on Audit and Accounts	Head Accountant	25	10

Sl. No	Institute	Course	Category	No. of Participants	No. of Days trained
II	KFS, Arippe	Induction Training	Forest Guard	38	13
				38	170
				45	91
		Awareness Training	KFDC Field Officer	25	61
		GPS Training in Forest Survey & Demarcation	Forest Officers	85	5
		Refresher Course by DFE	Frontline Staff	25	13
				25	13
				25	13
III	KFS, Walayar	Induction Training	Forest Guard	26	140
			”	47	180
		Refresher Course by DFE	Frontline Staff	32	13
				32	13
				32	13
				32	13
				32	13
				32	13
IV	Kerala Police Academy	Basic Training	Forest Guard	201	120
V	IMG, Kozhikode	STP Training	KFD Staff	23	6
				25	6
VI	IMG, Thiruvananthapuram	STP Training	,,	20	6
				20	6
				2	10
				4	10

Sl. No	Institute	Course	Category	No. of Participants	No. of Days trained
VI	IMG, Thiruvananthapuram	STP Training	KFD Staff	2	2
				2	2
				1	5
				8	5
				5	3
VII	ETDC, IMG, Tvp	Computer Application & Database Management	„	3	5
VII I	Extension Education Institute (EEI), Hyderabad	ATMA under Modified Extension Reforms	CCF	1	5
		Communication skills for efficient extension delivery	„	1	5
		Creative decision making and problem solving skills for organizational management	ACF	1	5
		Export orientation in Agriculture and allied sectors	„	1	5
		Extension Management skills for professional excellence	„	1	5

<b>Sl. No</b>	<b>Institute</b>	<b>Course</b>	<b>Category</b>	<b>No. of Participants</b>	<b>No. of Days trained</b>
	Extension Education Institute (EEI), Hyderabad	Extension methods for effective Transfer of Technology	ACF	1	5
		Human Resource management for proficient extension services	„	1	5
		ICTs and E-extension for rural transformation	„	1	5
		Promotion of post harvest technologies and value addition in agriculture and allied sectors	„	1	5
		Training skills for extension professionals	„	1	4
		Sequential extension interventions for technology dissemination	„	1	5
		Market led extension in Agriculture and Allied sectors	CCF	1	5

<b>Sl. No</b>	<b>Institute</b>	<b>Course</b>	<b>Category</b>	<b>No. of Participants</b>	<b>No. of Days trained</b>
		Mass media utilization for transfer of technology	ACF	1	5
		Convergence of Development departments for effective extension services	CCF	1	4
		New Dimensions in Extension for effective services	ACF	1	5
	Extension Education Institute (EEI), Hyderabad	Presentation skills for extension professionals	„	1	5
		Participatory extension methods for Transfer of Technology	„	1	5
		Process Documenatation skills for Transfer of Technology	„	1	5
		Time and Stress management for women extension officers	„	1	5



<b>Sl. No</b>	<b>Institute</b>	<b>Course</b>	<b>Category</b>	<b>No. of Participants</b>	<b>No. of Days trained</b>
	Extension Education Institute (EEI), Hyderabad	Project management in Development sectors	ACF	1	5
		Promotion of organic farming for sustainable agriculture	„	1	5
		ATMA under modified extension reforms	„	1	5
		Public Private partnership in changing development scenario	„	1	5
		Promotion of Integrated Farming Systems for sustainable livelihoods	„	1	4
		Skill development for extension functionaries	„	1	5
		Promotion of mechanization for profitable agriculture and allied sectors	„	1	4

<b>Sl. No</b>	<b>Institute</b>	<b>Course</b>	<b>Category</b>	<b>No. of Participants</b>	<b>No. of Days trained</b>
	Extension Education Institute (EEI), Hyderabad	Managerial skills for extension professionals	ACF	1	5
		Soft skills for personality development	„	1	5
VI	Forest Survey of India, Dehradun	Remote Sensing / GIS and its application	„	1	5
			„	2	5
		GPS / DGPS in Forest Survey and Demarcation	CCF / ACF	2	5
			„	2	5
VII	CDTS, Kolkatta	Investigation of Cyber Crime Cases	ACF	1	5
		Scientific Introgation	„	1	5
	CASFoS, Coimbathore	Training & Workshop on Wildlife Management	„	4	6
		Training of Trainees	„	4	6
		Refresher Course for Inservice ACF / SFS Officers	„	4	12
		Training cum Workshop on Community Forestry and JFM	„	3	6
			ACF	3	6

Sl. No	Institute	Course	Category	No. of Participants	No. of Days trained
	CASFoS, Coimbathore	General Refresher Course	ACF	4	12
		Legal Issues in Forestry & Wildlife	”	4	6
		Human Resource Training	”	4	6
	IFGTB, ICFRE, Coimbathore	DFE	”	3	2
	Bangalore	Second Regional Workshop of REDD	APCCF & DCF	1 & 3	2
	Hotel Samrat, New Delhi	National Workshop cum training Programme	”	2	3
<b>Total</b>				<b>1129</b>	<b>1240</b>

#### **4.7.9.1. Implemetation of Externally aided JICA project – “Capacity Development for Forestry Management and Training of Personnel”:-**

Kerala Forest Department is implementing a JICA funded Project (ID-P-199) titled – “Capacity Development for Forestry Management and Training of Personnel” being steered by the Ministry of Environment and Forests, Government of India for upgradation of infrastructure of the forest schools and improving the syllabus and course curriculum for the frontline staff (forest guards and foresters) of the Forest Departments in eleven states including Kerala. Infrastructure facilities at Kerala Forest Schools, Aripa and Walayar are to be renovated under this scheme for which ^9.909 crores has been sanctioned by GoI. The works of

construction / renovation in both schools has been awarded to 'COSTFORD'.

4.7.9.2. State Forest Training Institute (*SFTI*), *Arippa* – Government of India as per their letter F.No. 14-41/2003-RT (Kerala) dated 27.12.2011 have issued administrative approval and expenditure sanction for rehabilitation of SFTI, Arrippa, Kerala at total project cost for ₹487.53 lakhs and released ₹390.024 lakhs being 80% of the approved project cost. Contract for implementation of all components have been signed by the Principal, SFTI, Arrippa with M/s Centre of Science and Technology for Rural Development (COSTFORD) on 24.03.2012. Hon'ble Minister of Forests, Government of Kerala inaugurated the project implementation in a public function at Arrippa on 31.03.2012. Till March 2013 an amount of ₹50.05 lakhs has been expended for construction activities.

4.7.9.3. State Forest Training Institute (*SFTI*), *Walayar* - Government of India as per their letter F.No.14-41/2003-RT (Kerala) dated 20.03.2012 have issued administrative approval and expenditure sanction for rehabilitation of SFTI, Walayar, Kerala for ₹458.452 lakhs and released ₹366.7616 being 80% of the rehabilitation cost as first instalment for the works. ₹63.76 lakhs were spent on construction activities till March 2013.

**4.7.10. Renovation of Forest Museum:** - Renovation of Forest Museum at PTP Nagar has included in the One Year Action Plan of the Government for 2011-12. As per the draft project report, the non-recurring expenditure for the project is estimated to be ₹107.554 lakhs and recurring expenditure of ₹6 lakhs annually. Agreement for execution of work was signed on 06.02.2013 for an amount of ₹88.51 lakhs.

#### **4.8 Protection Wing**

4.8.1 This wing mainly deals with protection of forest wealth. The wing also deals with various Acts and Rules other than those specifically dealt within the purview of Wildlife Protection Act and Acts specifically dealt with other Chief Conservator of Forests. Matters relating to Forest Leases, Vested Forests, Forest Produces except NTFPs, allotment of raw

materials to wood based industries, matters relating to Legislature committee on assurances, Petition Committee, Environmental Committee and matters relating to Environmental Protection Act are also being handled by Protection Wing.

4.8.2 During 2012-13, the wing proposed for establishing 18 new Forest Stations of which 4 comes under Wildlife wing. No Forest Stations were established during 2012-13. Works pertaining to 8 Model Forest Stations as mentioned vide G.O (Rt) No.538/2011/F&WLD Dated: 19/12/2011 are in progress.

4.8.3 Various Acts and Rules were amended / modified during 2012-13 and the details are given below.

4.8.3.1 Vide G.O. (P) No. 50/2012/F&WLD dated: 16.04.2012, Kerala Forest (Restriction on cutting and selling of Sandal trees and grant of licence for possession and transport of Sandal wood and Sandal wood Oil) Rules 2012 (SRO. 278/2012)

4.8.3.2 Vide G.O. (P) No. 21/2013/F&WLD dated: 07.03.2013, No tree standing in the area (a) the tree constitutes a danger to life or property or (b) the trees are dead, diseased or wind fallen shall be cut, uprooted, burnt or otherwise destroyed as per Sub session (1) of Section 5 of the Kerala Preservation of Trees Act 1986 (B5 of 1986)

4.8.3.3 G.O (P) NO.28/2013, F&WLD DATED 14.03.2013 , Divisional Forest Officers of Territorial Forest Divisions as “Authorized Officer” within their respective jurisdiction for the implementation of the provisions in Chapter VI A of the Act relating to “Sandal Wood” as per Kerala Forest Act, 1961.

4.8.3.4 As per G.O (P) No. 29/2013, F&WLD dated 14.03.2013, Formulated three members committee in each district with the following members for the purpose of verification of the genuiness of the application for cutting Sandal tree under private possession ownership namely 1) Assistant Conservator of Forest (Social Forestry) – Chairman, 2) An officer nominated by the District Collector – Member, 3) An officer nominated by the Principal Agricultural Officer – Member.

4.8.3.5 G.O (MS) No.6/2013/ F&WLD dated 17.01.2013, Issued deligation of the powers to the Principal Chief Conservator of Forests, Additional Principal Chief Conservator of Forests, Chief Conservator of Forests & Conservator of Forests for the direct sale of timber only to Government Departments, public sector undertakings, places of worship, Government / Government aided Educational Institutions (subject to the conditions in G.O. (MS) No.21/2003/F&WLD dated 04.04.2013) increase of monthly ceiling there into a total of 150 M<sup>3</sup> from the existing ceiling of 100 M<sup>3</sup>.

4.8.3.6 G.O (MS) No. 37/2013 F&WLD dated 30.03.2013; Government delegated its powers to the Divisional Forest Officers to grant permission for film shooting in areas under their jurisdiction.

4.8.3.7 G.O.(MS) 60/2013 F&WLD DATED 12.06.2013, Delegated the power to issue 1,000 bamboos at a time subject to maximum of 50,000 bamboos per year for the local applicants for bamboos at the rate under fixation of selling price Act.

4.8.4 Allotment of Raw materials: - During 2012-13, department allotted 2, 04,896 MT of raw materials to HNL and 11998 MT of Bamboo & 15350 MT of Reeds to KSBC.

4.8.5 Details **of seized vehicles**: - The statistics on seized vehicles which were lying undisposed as on 31.03.2013 is given below.

<b>Sl. No</b>	<b>Type of vehicle</b>	<b>No of vehicle</b>
1	Jeep	20
2	Mini Lorry	26
3	Lorry	14
4	Pick up van	07
5	Auto rickshaw / Goods Auto	31
6	Motor cycle / Scooter	32
7	Tractor	06
8	Omni Van	05
9	Hitachi	01
10	Car / SUV	16

<b>Sl. No</b>	<b>Type of vehicle</b>	<b>No of vehicle</b>
	<b>Total</b>	<b>158</b>

#### **4.9 Social Forestry Wing**

4.9.1 Social Forestry aims at raising various species of seedlings for distribution and planting by public so as to meet the growing demand for timber, fuel wood, fodder, etc, thereby reducing the pressure on the traditional forest area.

4.9.2 The increasing level of Green House Gases (GHG) in the atmosphere and the consequent unpredictable and adverse climatic changes is a serious concern for people and Governments all over the world. There is urgent need to combat negative impacts of climate change for the survival of mankind. Trees serve as natural sink for carbon and constitute one of the major mitigating factors against Global Warming. Growing more trees in the state will render much needed ecological services and amelioration of the environment.

4.9.3 With the objective of mitigating the adverse effects of Global Warming, the Social Forestry Wing of Kerala Forest Department has embarked on massive afforestation programmes outside forest with the involvement of different sections of the society and implemented the following programmes as people's programme.

4.9.4 **Haritha Keralam Padhathi (Phase – IV):-** In order to widen the scope of Haritha Keralam Scheme, it was decided to implement the Phase – III of the scheme by further involving other Government Departments / Autonomous Government Institutions, students, NGOs, religious institutions, youth organizations, Civil Society Organizations, available lands in villages including community lands, institutional lands, road sides, railway sides, riverbanks, private lands including homesteads, Media establishments and others. 87.97 lakh of valuable seedlings have

been distributed and planted all over the state involving various agencies above.

4.9.5 It is decided to implement the Phase – V programme of Haritha Keralam Scheme during 2012-13 and 2013-14. For this programme it was proposed to raise 70.14 lakh seedlings during 2012-13 for distribution during the planting season of 2013.

**4.9.6 Road-side Planting of Shade Trees Scheme (Vazhiyora Thanal Scheme):-** This scheme envisages planting of shade trees on the road sides of important roads in Kerala. The seedlings of age more than one year are to be planted along the roadside. During 2012-13, 19590 such seedlings have been planted along the roadside.

**4.9.7 Expanding Rain shadow Effect in Idukki District:-** The Assistant Conservator of Forests (Social Forestry), Idukki has raised 25 mother bed nursery and 50000 basketted seedlings incurring and expenditure of ^4.62 lakhs and the seedlings distributed to the farmers through Nedumgandam, Chakkupallam, Karuanpuram, Vandenmedu, Udumbanchola and Ramakkalmedu grama Panchayaths.

**4.9.8 Scheme for Incentivisation of Private Forestry:-** The proposal to give cash incentives to farmers with an objective of encouraging them to grow more trees and produce timber in private lands have been approved by the Government vide G.O (Rt) No. 99/2012/F&WLD dated 17.02.2012. The tree species included in this scheme are teak, sandal, mahagony, anjili, plavu, rosewood, kambakom, kumbil, kunnivaka and thembavu and the scheme is proposed to be implemented through individual farmers, VSS, EDC, Kudumbasree units, Self Help Groups, Farmer's Co-operatives and NGOs. Those palnting a minimum of 50 seedlings in their land will be eligible for incentive. The amount of incentives proposed is as below:

(a)	From 50-200 plants	^ 50 per plant.
(b)	From 201-400 plants	^ 40 per plant with a minimum of 10000
(c)	From 401-625 plants	^ 30 per plant with a minimum of 16000



4.9.8.1 50% of the incentives will be given at the end of 1<sup>st</sup> year and the remaining 50% will be given at the end of the 3<sup>rd</sup> year. The scheme also provides cash awards for the best three performers in each of the above said slab at the end of 5<sup>th</sup> and 10<sup>th</sup> year.

4.9.8.2 The Assistant Conservator of Forests has reported that 889 applications were received for incentivisation and 330 applications were selected during 2012-13 and ₹13.31 lakhs was given as incentive to farmers. The numbers of seedlings raised by the farmers are 74513.

4.9.9. **Kuttanad Package:** - Kuttanad Package (Dr. Swaminathan Committee recommendation) is being implemented in the Social Forestry divisions of Alapuzha and Kottayam under the guidance of Kuttanad prosperity council headed by the Agricultural Production Commissioner, Kerala and under supervision of Director, Kuttanad package. The fund is being met from XIII Finance Commission Award through Agricultural Department.

4.9.10.1 **Vanadeepthi Programme:** - The Hon'ble Minister of Forests had convened a meeting in his chamber on 02.05.2012 and discussed about introducing indigenous species, particularly fruit and flower bearing trees with rich foliage in clear felled acacia plantation at Pathupara in Punalur division, covering an extent of 5 ha. He had desired that this experimental scheme called "Vanadeepthi" be launched on the eve of World Environment day. Accordingly, a pilot scheme for restoration and revival of original vegetation of the area was submitted to Government on 17.05.2012. The Government had accorded administrative sanction to the scheme at an estimated cost of ₹66.65 lakh under B.H 2406-01-101-92 – CA vide G.O (Rt) No. 314/2012/F7WLD dated 23.06.2012. Being an experimental project, the scheme included non-silvicultural activities like chain link fencing, barbed wire fencing, construction of trek path, percolation tanks, earthen / check dams, information cum seedling distribution centre, hedge planting etc. The inaugural ceremony of Vanadeepthi project at Pathupara was on 04.06.2012 by the Hon'ble Forest Minister.

4.9.10.2 As part of implementation works like planting of miscellaneous species including first year maintenance, construction of barbed wire fencing, construction of chain linked fencing etc has been done at Pathupara in Punalur Division incurring a total expenditure of ₹37.02

lakhs. A similar scheme has been commenced at Elambracod Acacia plantation in Thiruvananthapuram Forest Division. The Government have accorded Administrative Sanction for this works as per the G.O (Rt) No. 69/2013/F7WLD dated 12.02.2013.

4.9.11. **Suvarnodhyanam Project at Nedumbassery:** - This is a project implemented in 4 ha area at Nedumbassery, which was received as a compensation of 1.98 ha area transferred to them at Thattekad in Thrissur. The Government gave administrative sanction for the implementation of 3 works, viz; Establishment of Suvarnodhyanam at Nedumbassery, Construction of fence and Road at Abhayaranyam, Kaprikkad and Construction of hanging bridge across Periyar river between Perumthode and Vembooran island, under NABARD RIDF XV at a total outlay of 210 lakhs as per G.O (Rt) No. 291/2009/F&WLD dated 23.06.2009. The time period for the project was three years, ie from 2009-2012. Out of the three components, two components could be fully completed in the project period and some works related to the establishment of Suvarnodhyanam are to be completed. Request has been forwarded to extend the project period upto March 2014.

4.9.12. **Gandhi Smrithivanam Project:** - As per G.O (MS) 86/2012/F&WLD dated 25.07.2012, Governemnt have accorded Administrative Sanction and decided to implement this project through KFDC. On the approval of MOU, vide G.O (Rt) 462/13/Fin. Dated 18.01.2013, an amount of ^1 crore was allotted for implementation. As per the report from KFDC, the master plan for first phase has been completed.

4.9.13. **Orchidarium in Wagamon:** - Government vide G.O (MS) No. 81/12/F&WLD dated 21.07.2012 have entrusted the implementation of this project to KFDC. In the meantime Forest Department have already completed preliminary works such as maintenance of existing building, providing electric connection, digging borewells, plumbing – sanitation works, cleaning of existing check dams, construction of approach road and contour survey etc. On the approval of MOU, ^50 lakhs was allotted vide order No. G.O (Rt) 462/13/Fin. Dated 18.01.2013. As per the report from KFDC, the master plan and layout plan were prepared and construction of check dam and fence is in progress.

#### 4.10 Special Afforestation Wing

4.10.1 This wing is mainly entrusted with two important functions, viz; Monitoring the implementation of Forest (Conservation) Act, 1980 and supervising the issuance of the No Objection Certificate (NOC) to wood based industrial units by DFOs.

4.10.2 **Monitoring the Implementation of Forest (Conservation) Act, 1980:-** Chief Conservator of Forests (SA & NO) is the Nodal Officer for the Government of India for monitoring the implementation of the Forest (Conservation) Act, 1980 in the State. The proposals received from intending User Agencies for diversion of forest land are processed and examined in accordance with the guidelines issued by the Government of India. During 2012-13, 7 proposals were submitted to Government of India and approvals were obtained as shown below.

Sl No	Purpose	Order No. and Date	User Agency	Area (ha.)
1	Diversion of land for Thrikkalathur – Veettoor Road	G.O (Rt) No.174/2012/F&WLD dated 29.03.2012	PWD	0.192
2	Electrification of Arancode in Kannamkundu	4-KLB 811/2011-BAN/1266 dated 29.05.2012	KSEB	0.0563
3	Diversion of land for widening of NH47 Peechi Vazhani Wildlife Sanctuary	4-KLC 844/2011-BAN/1669 dated 07.08.2012	NHAI	13.95
4	Erection of 45 solar lamps in Bhoothathankettu Vadattupara	G.O (Rt) No.406/2012/F&WLD dated 07.08.2012	KSEB	0.0016
5	Maintenance of Kinginthodu – Pothumattom Road	G.O (Rt) No.430/2012/F&WLD dated 24.08.2012.	PWD	0.18

<b>Sl No</b>	<b>Purpose</b>	<b>Order No. and Date</b>	<b>User Agency</b>	<b>Area (ha.)</b>
6	Laying of OFC by BSNL in Kandazhy - Kayanpoovam	G.O (Rt) No.444/2012/F&WLD dated 07.09.2012	BSNL	0.018
7	Kanamala Bridge in Erumeli Pamapa Road	4- KLB 771/2011 - BAN /186 dated 21.09.2012	PWD	0.542

**4.10.3 State Compensatory Afforestation fund Management and Planning Authority (CAMPA):** – The State CAMPA was constituted during 2009 with the approval of Inspector General of Forests (IGF), MoEF, New Delhi with an APO approval of ^133.00 lakhs. Till the end of the year, expenditure to the tune of ^133.25 lakhs, has been incurred. The APO for 2010-11 has been approved by State Level Steering Committee for ^ 269.85 lakhs and forwarded to Ad-hoc CAMPA. An amount of ^136.52 lakhs have been released to State CAMPA on 26.03.2013. APOs for 2011-12 and 2012-13 have been approved by the Steering Committee for ^218 lakhs and ^201.50 lakhs respectively for which the amount is yet to be released by Government of India.

**4.10.4 Dealing of applications for the issuance of liscence to wood based industrial units in Kerala:** - The State Level Committee for dealing with the applications for starting / regularizing sawmills / other wood based industrial units were constituted by the Central Empowered Committee. The State Level Committee received 12351 applications altogether and disposed of 4497 numbers by issuing 3085 NOCs. The one time payment fee collected as prescribed by the Central Empowered Committee is kept in the interest bearing bank account in SBT, Vazhuthacaud, Thiruvananthapuram in which the amount acquired for exclusively interest is ^ 10.17 crores.

**4.10.5 The Kerala Forest (Regulation of Sawmills and other Wood-based Industrial Units) Rules, 2012** have been revised vide SRO No. 269/2012 dated 19.04.2012. DFOs / WLWs having territorial jurisdiction were notified as the Authorised Officers under the Rules, who have issued 1950 number of licenses.

#### **4.11 Vigilance Wing**

4.11.1 A Vigilance Wing was formed in Kerala Forest Department vide G.O (MS) No.289/71/Agri dated 23.12.1971, with broad intent of enquiring into illegal removal of forest produce, evaluation of regeneration areas, corrupt practices by the forest officials etc. A subsequent Government order G.O (MS) No. 4/75/AD dated: 21.01.75 specified the framework and working of the Vigilance Wing. As per this Government Order, the objective of Vigilance Wing is to combat corruption and misconduct in the department effectively and to detect and prevent forest offences. Forest Vigilance Wing takes up cases under the following categories for enquiry.

- Nepotism of staff
- Causing wrongful loss to Government property or revenue or claim or dues.
- Making false claim against Government such as false T.A, House Rent, etc.
- Any dishonest or intentionally improper conduct on the part of a departmental officer or abuse of his power,
- Causing avoidable delay in the disposal of Government business.
- Misappropriation or misuse of any Government property.
- Gross negligence or dereliction of duty.
- Any illegal or improper conduct.
- Abetment of the above offences.
- Illicit transport of forest produces.
- Allegations against department works.
- Petitions from public.
- Enquiry into the allegations rose against staff, petitions regarding illicit felling, poaching, ganja cultivation, arrack distillation, encroachment, etc.
- Evaluation of regeneration areas, surprise checking of check posts, night patrolling to prevent illegal transportation of forest produces, etc.

4.11.2 **Machinery for vigilance and evaluation works:** - The Additional Principal Chief Conservator of Forests is the head of Vigilance Wing at

Forest Headquarters. Two Regional offices under two Conservators of Forests function at Kottayam and Kozhikode respectively. Eight (8) Flying Squad Divisions headed by the Divisional Forest Officers and seventeen (17) Flying Squad Units under Range Forest Officers function within the jurisdiction of Conservators. A Forest Intelligence Cell under Assistant Conservator of Forests and a Control Unit headed by a Range officer who in turn is responsible to the Addl. Principal Chief Conservator of Forests is functioning at the Headquarters.

**4.11.3 Forest Intelligence Cell:** - Forest Intelligence Cell was established during 2001 under the control of Chief Conservator of Forests (Vigilance). One Range Officer and 8 supporting field staff (8 beat Forest Officers) are working at various places in the state. Assistant Conservator of Forests (Evaluation), besides his regular duties in the office of Chief Conservator of Forests (Vigilance), is supervising the Intelligence work of the Cell. The secret information collected by the Forest Intelligence Cell has resulted in detection of serious offences and arrest of the accused especially in Wildlife crimes. Field officers have recognized the utility of information collected by the Intelligence Cell through secret sources. During 2012-13, an amount of ₹1.69 lakhs has been disbursed as remuneration to informants.

**4.11.4 Raids conducted and Contra bands seized:** - During the year, 921 no. of ganja plants were destroyed and 11740 litres of alcohol/wash were destroyed through various raids. Also, 9 vehicles were seized in relation with the smuggling of forest goods.

**4.11.5 Toll Free Telephone Facility:** - A toll free telephone (No. 1800 425 4733) is installed in Forest Headquarters Thiruvananthapuram to receive complaints and information from the public. This is a 24 hour facility. The information / complaints received in toll free telephone are recorded in the printed format and passed on to the concerned field officers for necessary further action. The Toll Free telephone facility started operating from 2006 onwards. During 2012-13, 423 complaints have been registered through this facility.

4.11.6 During 2012-13, of the 936 complaints received, 805 have been investigated and proper action has been taken. Details of these complaints are shown below.

<b>Sl.No</b>	<b>Particulars</b>	<b>No. of Cases</b>
1	Illicit felling of trees and smuggling of timber and other forest produce	84
2	Encroachments in reserve forest.	26
3	Irregularities involved in the expenditure on forest works, Misappropriation of Government money.	22
4	Irregularities involved in the execution of departmental works	09
5	Irregularities in wild elephants and other animals.	06
6	Shooting of wild elephant and other kinds of animals	08
7	Cases of subordinates misbehaviour	04
8	Illicit transport of forest produce belongs to Government.	10
9	Corruption practices in auction	04
10	Assault etc.	09
11	Other kinds of petitions	257
12	Violation of KPT Rules/Act.	07
13	Violation of WL Act.	173
14	Illicit distillation	01
15	Atrocities against Tribals	15
16	Atrocities against animals	17
17	Illicit collection of rubble and sand.	10
18	Illicit felling, storage and transport of timber from private lands	18
19	Petition against forest officials.	204
20	Petition against VSS	14
21	Cases involved in smuggling of bamboos and reeds.	01
22	Press report	15
23	Illicit transport of forest produce not belonged to Government	04
24	Fire occurrence	06
25	Misuse of Departmental vehicles	02
26	Possession of Unlicensed Gun	01
27	Mis-appropriation of money	01
28	Smuggling of sand	08
	<b>Total</b>	<b>936</b>

## 4.12 Wildlife Wing

4.12.1 Conservation of wildlife and bio-diversity is gaining more and more importance these days. Kerala is having very rich bio-diversity. Western Ghats, nearly 1600 Km long chain of mountains along the western side of Indian Peninsula, has been declared one of the bio-diversity Hot Spots by IUCN. Southern Western Ghats where the forests of Kerala are situated are supporting more bio-diversity when compared to the northern Western Ghats. It is estimated to harbour more than 4600 plant species in Kerala portion of Western Ghats which constitute about 27% of the species available in India. Hence the main function of wildlife wing is the conservation of wildlife and bio-diversity in the State.

4.12.2 During the year 2012-13, the state of Kerala has 3213.237 km<sup>2</sup> of forests under Protected Areas which comes to about 28.41 % of the total forest area in State. Preparation of Management Plan is a pre-requisite for getting financial assistance from Government of India. All our Wildlife Sanctuaries and National Parks have approved Management Plans which are prepared in accordance with the scientific guidelines issued by Government of India. The status of management plans as on 31-03-2013 is given below.

Sl. No	Name	Area(km <sup>2</sup> )	Status
1	Eravikulam National Park	97.000	Valid upto 03.2022
2	Silent Valley National Park	237.520	Valid upto 03.2022
3	Anamudi Shola National Park	7.500	Valid upto 03.2018
4	Mathikettan National Park	12.817	Valid upto 03.2018
5	Pambadum Shola National Park	1.318	Valid upto 03.2019
6	Periyar Tiger Reserve	925.000	Valid upto 03.2021
7	Neyyar WLS	128.000	Valid upto 03.2022
8	Peechi - Vazhani Wildlife Sanctuary	125.000	Valid upto 03.2022
9	Parambikulam W L S (Tiger Reserve)	643.660	Valid upto 03.2021
10	Wayanad WLS	344.440	Valid upto 03.2022
11	Idukki WLS	70.000	Valid upto 03.2022



<b>Sl. No</b>	<b>Name</b>	<b>Area(km<sup>2</sup>)</b>	<b>Status</b>
12	Peppara WLS	53.000	Valid upto 03.2022
13	Thattekkad Bird Sanctuary	25.000	Valid upto 03.2022
14	Shenduruney WLS	171.000	Valid upto 03.2022
15	Chinnar WLS	90.440	Valid upto 03.2022
16	Chimmony WLS	85.000	Valid upto 03.2022
17	Aralam WLS	55.000	Valid upto 03.2022
18	Mangalavanam Bird Sanctury	0.027	Valid upto 03.2019
19	Kurinjimala Sanctuary	32.000	Valid upto 03.2020
20	Choolannur Pea Fowl Sanctuary	3.420	Valid upto 03.2021
21	Malabar Sanctuary	74.215	Valid upto 03.2015
22	Kadalundi - Vallikunnu Community Reserve	1.500	Under Preparation
23	Kottiyoor Wildlife Sanctuary	30.380	Valid upto 03.2023
	<b>Total</b>	<b>3213.237</b>	

4.12.3 During the year, the Wing continued to implement several special schemes financed by Government of India such as Project Tiger, Project Elephant, Protection of Wildlife outside Protected Areas, Nilgiri Biosphere Reserve Project and Agasthyamala Biosphere Reserve Project for intensive management of Rare, Endangered and Threatened (RET) species and special ecosystems and landscapes.

4.12.4 As a result of constitution of Wildlife Wing and more Sanctuaries and National Parks as well as shift in the priorities as per National Forest Policy - 1988, more attention had to be focused on wilderness areas, natural forests, conservation of wildlife and bio-diversity, etc. Activities such as habitat management, maintenance of marshes and swamps, maintenance of water holes, regeneration of degraded ecosystems and fire control gained tremendous importance and became inevitable for sustained and scientific management of Sanctuaries and National Parks.

4.12.5 The works for conservation of bio-diversity in protected areas mainly include habitat improvement, fire protection, development of water holes, eco-development, eco-tourism, extension and education, Wildlife Census, research, development of infrastructure for protection, etc. All

these works are periodic and recurring in nature which has to be executed with diligence during every season. Wildlife Wing is looking after all these activities.

4.12.6 Though forest offences relating to illicit collection of timber, fire wood, minor forest produce etc are declining, high value wildlife crimes such as illicit trade in tiger skin, leopard skin, elephant tusk, snake venom, barn owl, star tortoise, sand boa, etc. are increasing. Many of such high value wildlife crimes have inter-state and international ramifications. It was in view of this fact; Wildlife Crime Control Bureau has been constituted by Government of India at Centre with few regional offices. Incidence of such serious wildlife crimes are dealt in co-ordination with agencies like Wildlife Crime Control Bureau and other State Forest Departments.

4.12.7 The Department is also implementing large number of eco- tourism activities in the protected areas. The tribals and other forest dependent communities are being given employment opportunities with a view to enlisting their co-operation for protection activities through specific ecotourism programmes, viz; guided trekking, tiger trail, protection oriented border hiking, bamboo rafting, tented camping, tribal heritage museum and other participatory activities like participatory fire management, measures to make the Protected Areas plastic free, eco shops, facilities for selling value added products out of honey, wax, MFP, etc., souvenirs from re-cycled plastic, tailoring unit, handicrafts unit, branded mineral water production, etc.

4.12.8 It is worth mentioning that the department could arrange to produce organic pepper and export it from Vanchivayal, Mannakkudy and Paliyakkudy tribal colonies in Periyar Tiger Reserve.

4.12.9. The extension and interpretation activities under wildlife wing are vital for enlisting support of the public for conservation of nature and natural resources and to increase the awareness about wildlife and biodiversity.

4.12.10. Scientific management of Sanctuaries and National Parks require constant monitoring of health of wild animals to check the spread of diseases. Many contagious diseases can be carried to wild animals from domestic cattle straying into the forest areas. For veterinary care, the department has only 3 Veterinary Surgeons.

4.12.11 Protection of Wildlife in areas outside forests and Protected Areas is also given equal priority by the forest department. Chief Wildlife Warden and Wildlife Wardens are the Statutory Authorities as per Wildlife (Protection) Act, 1972. The department is also paying special attention for the protection of sacred groves, mangroves and wetlands as well.

4.12.12 **Wildlife Sanctuaries & National Parks:** - As on 31.03.2013, Kerala has 3211.737 km<sup>2</sup> of forests under protected areas (5 National Parks and 17 Wildlife Sanctuaries) accounting 28.41 % of the total forest area.

4.12.13 **Man-Animal Conflicts resolved:** - Man – Animal conflict is a perpetual problem confronted by the local people who inhabit the fringe areas of forest. This often results in serious injury, permanent disability, crop damage, cattle loss, hut loss and loss of life of human beings which in turn may end up in retaliatory killing of wild animals. The wild elephants and wild boar dominate the scene and do damages. Kerala Forest Department has so far done many proactive measures such as digging elephant proof trenches, creating elephant proof walls and constructing solar powered electric fences to mitigate this problem. Vide G.O (Rt) No.265/2011/F&WLD dated 17.06.2011, the Government conditionally allowed to shoot the wild boars repeatedly cause damages to crops, on experimental basis, for a period of one year. Subsequently, vide G.O (Rt) No.399/2012/F&WLD dated 04.08.2012, the period was extended for one more year from 23.06.2012. Thereafter the Government vide G.O (MS) No.31/2013F&WLD dated 19.03.2013, comprehensively amended conditions and procedure and prescribed in the above order and extended the period for 3 years from 04.08.2012.

4.12.14 **Integrated Development of Wildlife Habitats to Wayand Wildlife Sanctuary for Voluntary Relocation:** - There has been a

scheme for voluntary relocation of human settlements inside Wayand Wildlife Sanctuary with the Central assistance. As part of it, Government of India approved a proposal for relocation of 800 eligible families from 14 settlements at a total cost of ₹ 80 crores which was to be implemented through Revenue Department. During the year 2012-13, Government of India accorded Administrative Approval for voluntary relocation of 98 eligible families from one settlement viz; Kottankara, allocated an amount of ₹ 980.00 lakhs and released ₹ 784.00 lakhs as first installment which was fully utilized.

#### 4.12.15 **Compensation paid to Victims of Attack by Wild Animals:** -

The Kerala Forest Department provides compensation to the victims of attack by wild animals vide 'Kerala Rules for Payment of compensation to victims of wild animals 1980'. During 2012-13, a total of 6355 applications were received for compensation and, a total of ₹424.948 lakhs have been distributed to the victims.

4.12.16.1 **Wildlife Census:** - A general wildlife census has been conducted from 18<sup>th</sup> to 20<sup>th</sup> May 2011 in collaboration with Kerala Forest Institute, Peechi, Thrissur. KFRI has submitted draft report as per the suggestions of KFD. Last general wildlife census was conducted during 2002 and previously during 1993 and 1997. The estimated number of major species is given below.

Sl. No	Species	No. of animals (1993)	No. of animals (1997)	No. of animals (2002)	No. of animals (2011)
1	Elephant	4286	5737	6965	7490
2	Gaur	4840	4151	14787	17860
3	Malabar Giant Squirrel	1384	63474	88919	..
4	Nilgiri Langur	2987	24809	51517	..
5	Sambar	10665	13661	30414	32148
6	Spotted Deer	6259	14881	38391	11398
7	Wild Boar	40963	40425	60940	48034
8	Nilgiri Tahr	1075	1008	902	..
9	Tiger	76	73	71±7	..

4.12.16.2 Estimation of Population has been carried out exclusively for elephants under the Project Elephant scheme during 2005, 2007, 2010 and 2012. The process has been conducted simultaneously in all the South Indian States. The details of population estimation carried out exclusively for elephants are given below.

<b>Year</b>	<b>2005</b>	<b>2007</b>	<b>2010</b>	<b>2012</b>
Number of Elephants	5135	6068	6026	6177
Male – Female Ratio	1:3.38	1:2.96	1:2.71	1:1.68

4.12.16.3 Tiger Census was carried out in 2006 as a part of the all India Estimation of Tiger population. The estimated population of Tigers was 46 in the State. The details of tiger population based on previous year's estimation are given below

<b>Year</b>	<b>1993</b>	<b>1997</b>	<b>2002</b>	<b>2006</b>	<b>2010</b>
Number	76	73	71 $\pm$ 7	46	112 (105-119)*

\* Confidence Interval

4.12.17 **Wild animals caught and released in the wild:** - During the year 2012-13 the department staff rescued the following wild animals and released to the wild after proper medication.

<b>Sl No.</b>	<b>Name</b>	<b>Nos</b>	<b>Sl No.</b>	<b>Name</b>	<b>Nos</b>
1	Barn Owl	01	10	Monitor Lizard	01
2	Owl	01	11	Little Grebe	02
3	Orient Bay Owl	01	12	Brahmini Kite	01
4	Python	26	13	Tiger	01
5	King Cobra	06	14	Slender loris	01
6	Cobra	14	15	Palm Civet	05
7	Bonnet Macaque	01	16	Poisonous Snake	01
8	Mouse Deer	01	17	Viper	01
9	Pea fowl	01			

4.12.18. During 2012-13, UNDP Award for the best Tiger Reserve in India was won by Periyar Tiger Reserve. Parmbikulam Tiger Reserve got the Green Guard Award from Jungles Organisation, Kolkata and NTCA Award for excellence in the category, Innovative Practices from NTCA.

#### **4.13 Working Plan & Research Wing**

4.13.1 Working Plan is the main instrument of forest management and is defined as a written scheme of management aiming at continuity of policy (normally for a period of 10 years) controlling the treatment of forest. This wing is having 6 Working Plan divisions. They are responsible for preparing Working plans for 25 territorial divisions. In addition, Forest Resource Survey Cell at Thrissur is responsible for assessing the availability of various forest resources such as Bamboos, Reeds Canes, etc. There are two Research Divisions one at Thrissur and the other at Thiruvananthapuram who carry out various applied silvicultural research and maintenance of permanent preservation plots. The two Research Divisions are acting as an interface between various Research institutions like TBGRI, KFRI, IFGTB, etc. in undertaking multi location trials and to test the efficacy of the research findings in the local field situations. Seed centre at Kerala Forest Research Institute; Peechi is being jointly managed by DCF, Research North and KFRI.

4.13.2 The Working Plan & Research Wing has laid, over a period of last two to three decades, a number of permanent plots, long term observation plots, species introduction trials and miscellaneous trials regarding various aspects of Silvicultural management. There is enormous amount of data generated from these plots which needs statistical analysis, each plot wise / species wise so as to decipher the trends in the species experiments, will be of immense technical and scientific help for the forestry management in Kerala.

4.13.3 **Status of working plan:** - Out of 25 territorial Forest Divisions 16 Divisions are having Working Plans approved by Government of India. The revision of Working Plans for the Divisions for which Working Plans are either expired or going to expire soon are at various stages of completion. During 2012-13, drafts for Mankulam, Mannarkad and Wayanad South were submitted to Government of India for approval. Field works for 8

divisions and draft preparation of Working plans for another 4 are in progress.

**Status of working plans as on 31.03.2013 is shown below.**

<b>Sl. No</b>	<b>Division</b>	<b>Valid till</b>	<b>Status</b>
1	Thiruvananthapuram	March - 2014	Field work about to start
2	Thenmala	March - 2019	Working Plan is current
3	Achenkoil	March - 2018	Working Plan is current
4	Punalur	March - 2021	Working Plan is current
5	Ranni	March - 2012	Field work in progress
6	Konni	March - 2011	Field work in progress
7	Kottayam	March - 2015	Working Plan is current.
8	Kothamangalam	March - 2012	Field work in progress
9	Munnar	March - 2020	Working Plan is current.
10	Marayoor	March - 2020	Working Plan is current.
11	Mankulam	March - 2011	Working Plan submitted to GOI. Approval expected soon.
12	Thrissur	March - 2014	Field work in progress.
13	Chalakyudy	March - 2015	Working Plan is current.
14	Vazhachal	March - 2013	Field work in progress.
15	Malayattoor	March - 2012	Field work in progress.
16	Palakkad	March - 2019	Working Plan is current.
17	Nilambur (N)	March - 2013	Field work completed. Working Plan being drafted.
18	Nilambur (S)	March - 2013	Field work completed. Working Plan being drafted.
19	Nenmara	March - 2013	Field work is in progress.

Sl. No	Division	Valid till	Status
20	Mannarkad	March - 2013	Working Plan submitted to GOI. Approval expected soon.
21	Kozhikode	March - 2021	Working Plan is current.
22	Kannur	March - 2013	Field work completed. Working Plan being drafted.
23	Wayanad (N)	March - 2013	Field work is in progress.
24	Wayanad (S)	March - 2013	Working Plan submitted to GOI. Approval expected soon.
25	Kasargod	March - 2013	Field work completed. Working Plan being drafted.

4.13.4 **Kerala Forest Seed Centre:** - With the help of Kerala Forest Research Institute, an excellent facility for seed testing, grading and certification at Peechi has been established and it is known by the name Kerala Forest Seed Centre (KFSC). During 2012-13, 23000 Kgs of *Tectona Grandis* (Teak) seeds were collected and 507 seeds were collected under miscellaneous category.

4.13.5 **Gene Pool Conservation Activities:** - The following research plots were maintained by the wing during 2012-13.

- Gene bank of indigenous varieties of fruit bearing trees of Kerala-Mavu, Plavu and Kudaampuli.
- Introduction of new species from Andaman & Nicobar.
- In-situ conservation and augmentation of Sandal in Marayoor.
- Planting trials of *jatropha curcus* and *pongamia pinnata*.
- Clonal seed orchard of Eucalyptus species.
- Selection of plus trees of teak and other important tree species as source of superior quality seeds as well as material for Clonal propagation.
- Clonal seed orchards of Teak.

4.13.6 The national Programme “National Programme of Promoting Conservation of Medicinal Plants and Traditional knowledge for enhancing Health and Livelihood Security” is implemented by this wing along with other 8 States.



4.13.7 The main component is setting up of the State level Medicinal Plants Seed Centre and Central Nursery for Medicinal Plants to ensure permanent supply of high quality planting material. A modernized Central Nursery at Karikulam in Palapilly Range of Chalakudy Division has been set up in 6.076 hectares for this purpose.

4.13.8 **Teak Seed Production Areas (TSPAs):-** Teak Seed Production Areas under the jurisdiction of research Wing of the department were returned to the respective territorial divisions vide the decision taken in the Senior Forest officers meeting held on 23-24, September 2009.

4.13.8.1 Subsequently, the council of CCFs has decided to identify a fresh the potential teak plantations desirably between 20 and 40 years of age group for developing as a teak seed production area through appropriate genetic culling and scientific maintenance. In this regard, the Director, IFGB and KFRI, Peechi were requested to identify the potential areas that can be developed as TSPAs. A team of scientists from both institutions as well as the officers of the Forest Department from territorial and research wing have visited and identified 37 potential teak plantations, covering a total area of 2177 ha. From these identified teak plantations, an area of 958.55 ha consisting of 19 teak plantations were developed as a Teak Seed Production Area (TSPAs) with all the desired scientific inputs during the current year.

4.13.8.2 The list of plantations identified for genetic culling and maintenance as TSPAs, are as follows.

Sl. No.	Location	Division	Year	Area (ha.)
1	Thallappara	Thenmala	1980	16.97
2	Thallappara		1981	13.53
3	Palaruvi		1968	13.96
4	Palaruvi	Thenmala	1970	9.80
5	Chembanaruvi	Konni	1979	62.92

Sl. No.	Location	Division	Year	Area (ha.)
6	Adukuzhi	Ranni	1983	45.54
7	Mullapana	Chalakydy	1976	126.86
Sub Total				289.58
1	Elival	Palakkad	1971	41.84
2	Sankarankodu	Nilambur (South)	1961	79.50
3	Pulakkapara		1970	44.70
4	Nedumgayam		1973	65.00
5	Nedumgayam		1970	55.40
6	Karia Muriem	Nilambur (North)	1974	56.43
7	Alathur Bit 2	Wayanad (North)	1981	67.50
8	Alathur Bit 1		1981	57.00
9	Madhamangalam	Wayanad (South)	1976	55.00
10	Madhamangalam		1977	36.70
11	Chjiyambam		1978	50.00
12	Changam		1978	59.90
Sub Total				668.97
Grand Total				958.55

4.13.9 **Statistics Wing:** - This wing is attached to Working Plan and Research Wing of the headquarters. The wing is headed by Deputy Director (Statistics) and assisted by two Research Assistants and four Statistical Assistants. Statistical Assistants of various circles / divisions are involved in collection and compilation of data and the headquarter

wing is processing the same for updating forestry database every year. The Statistics Wing is responsible for preparation of Annual Administration Report, annual publication titled 'Forest Statistics' and monthly progress reports of various schemes implemented by the department. This wing is also entrusted with the work of furnishing statistical reports to different agencies of Government of India and State Government. So far the annual reports upto the year 2012-13 are prepared.

**4.13.10 Research studies and Surveys:** - Research activities on various projects were carried out by the department during 2012-13 and an amount of ₹41.26 lakhs was expended for the same. The details are as follows

**4.13.10.1 Kerala Forest Research Institute, Peechi**

<b>Sl. No.</b>	<b>Name of Project</b>	<b>Amount Expended (₹ in lakhs)</b>
1	Population structure, carbon sequestration, litter dynamics, propagation, economics and livelihood potential of <i>Pseudoxytenanthera ritchei</i> and <i>Ochiandra setigera</i> -two rare bamboo species of Kerala	3.00
2	Storage Practice in recalcitrant tropical Forest seeds of Western Ghats	2.52
3	Capacity building of field staff of Kerala Forest Department and Forestry Management	6.73
4	Regeneration dynamics propagation and restoration of selected rare and threatened rattans in the Kerala part of Western Ghats	3.57
5	Conservation through restoration of Wild Nutmeg tree population of Western Ghats of Kerala	3.46
6	Workshop on animal products in Ayurveda and other Traditional Systems	0.33

#### 4.13.10.2 Kerala Agricultural Survey

<b>Sl. No</b>	<b>Name of Project</b>	<b>Amount Released (` in lakhs)</b>
1	Survey of Mammals of Chimmony wildlife sanctuary with particular emphasis on the less known mammals (completed)	0.92

#### 4.13.10.3 Rajiv Gandhi Centre for Biotechnology

<b>Sl. No</b>	<b>Name of Project</b>	<b>Amount Released (` in lakhs)</b>
1	Isoaltion of active fraction having anti hepto cellular carcinoma activity from hygodrum fiexousum and analysis of its synergistic effect with sorafenib the drug currently used for treatment of HCC	1.65

#### 4.13.10.4 Jawaharlal Nehru Tropical Botanic Garden and Research Institute

<b>Sl. No</b>	<b>Name of Project</b>	<b>Amount Released (` in lakhs)</b>
1	Systematic and Phylogeograhic evaluation of grasses and sedges of Kerala portion of Nilgiri Biosphere Reserve	2.7000
2	Prepration of illustrated bilinqual field guide on medicinal fruits seeds and their seedlings occurring in Kerala Forests	1.5000

#### 4.13.10.5 Institution of Forest Genetic and Tree Breeding, Coimbatore

<b>Sl. No</b>	<b>Name of Project</b>	<b>Amount Released (` in lakhs)</b>
1	Reclamation of laterile soil using beneficial microbes in Kannur District	3.060

#### 4.13.10.6 Institution of Foresters Kerala, Thiruvananthapuram

<b>Sl. No</b>	<b>Name of Project</b>	<b>Amount Released (<i>in lakhs</i>)</b>
1	Total Evaluation of Forest Development Agency	1.650
2	A Comprehensive study on the socio economic and Cultural aspect of Sacred groves in Kerala	0.910

**4.14 Forest Information Bureau:** Forest Information Bureau is the publicity and extension arm of the department. The bureau undertakes works like publication of 'Aranyam' official bi-monthly of the department, printing and publishing of booklets and palmlets covering various activities of the department, arranging publicity in connection with World Forestry Day, World Earth Day, World Environment Day, Wildlife Week etc, designing and releasing advertisement to media, designing, developing and distributing exhibits for field offices, developing documentary films and arranging general publicity for State level functions of department.

## Chapter V

### FINANCIAL RESULTS

**5.1 Revenue and Expenditure:** - The Forest Revenue realized during the year 2012-2013 was ^237.33 crores. The total expenditure incurred during the year was ^373.24 crores.

5.1.1 The forest contributes substantially to the non-tax revenue of the State. The revenue from forestry sector by way of sale of timber and other forest produces comes to ^219.968 crores in 2012-13. Major portion of the forest revenue was from timber. During 2012-13, ^202.256 crores was collected towards revenue from the sale of timber alone which accounted for 85.22 % of the total forest revenue.

5.1.2 The comparative position of revenue and expenditure for the year 2012-13 and 2011-12 is shown below.

(^ in crores)

Year	Revenue	Expenditure		
		Plan	Non Plan	Total
2012-2013	237.33	127.48	245.76	373.24
2011-2012	220.52	94.22	204.31	298.53

**5.1.3 Details of Non-tax Revenue:** - During the year, an amount of ^ 23796.762 lakhs has been collected from sales and other receipts and an amount of ^63.492 lakhs has been refunded so that the net revenue was ^ 23733.270 lakhs. The budget head wise details are shown below.

Sl. No.	Head of Account	^ in lakhs
1	2	3
	<b>0406-01-101 Sale of Timber and other Forest produce.</b>	
1	99 Timber	20225.558
2	98 Firewood and Charcoal	61.451
3	97 Reciepts from Sale of Forest Produce Comming under the Kerala Private Forest (Vesting and Assignment) Act.	13.567
4	96 Reciepts from Forest Development Tax	1109.785
5	95 Reciepts under Kerala Forest Produce	575.151
6	94 Other Items	11.302
	<b>Total (101)</b>	<b>21996.814</b>
	<b>0406-01-800 Other Reciepts</b>	
1	99 Interests on Arrears of Forest Revenue	57.718
2	98 Reciepts from Wild life Department	192.473
3	97 Scheme for Provision of House Sites and houses to Landless Workers in Rural Area - Free Supply of Timber	0.000
4	96 Revenue Realised from the KFDC on the sale of proceeds of residual growth	0.005
5	95 Other Items	1452.831
6	94 Livestock	16.194
7	93 Integrated Wasteland Development Programme	0.000
8	91 Receipts on account of Lapsed and Confiscated Deposits	4.627
9	90 Forest Land Lease rent	76.100
	<b>Total (800)</b>	<b>1799.948</b>
	<b>Grand Total</b>	<b>23796.762</b>
	Refunds (0406-01-900-00)	63.492
	<b>Net Revenue</b>	<b>23733.270</b>

**5.1.4 Forest Development Tax (FDT):-** FDT is levied @ 5% on the sale proceeds of forest produce. After deducting the cost of collection of tax, balance amount was placed as additional budgetary source. During the year 2012-13 an amount of ₹ 1109.785 lakhs was collected as FDT.

**5.1.5 Outstanding on Account of Forest Revenue:** - An amount of ₹ 251.232 crores is outstanding on account of forest revenue at the end of the year 2012-13.

**5.1.6 Outlay and Expenditure:-** The outlay and expenditure during 2011-12 and 2012-13 is as follows.

(₹ in crores)

Schemes	2011-12		2012-13	
	Outlay	Expenditure	Outlay	Expenditure
State sector	77.24	71.37	119.06	105.55
Central sector	35.66	22.85	33.16	21.92
<b>Total (Plan)</b>	<b>112.90</b>	<b>94.22</b>	<b>152.22</b>	<b>127.47</b>
Non Plan	210.79	204.31	245.78	245.76
<b>Grand Total</b>	<b>323.69</b>	<b>298.53</b>	<b>398.00</b>	<b>373.23</b>

**5.1.7** The Plan expenditure under forestry sector during 2012-13 is ₹ 127.47 crores, which is 83.74 % of the total plan outlay. The expenditure incurred for Central Sector Schemes is ₹ 21.92 crores and that under State Sector Schemes is ₹ 105.55 crores.

**5.1.9 Developments under 12<sup>th</sup> Five Year Plan:** - The year 2012-2013 is the first year of the 12<sup>th</sup> Five Year Plan. The target and achievement is given below

(₹ in Crores)

Year	Target	Achievement
2012-13	152.22	127.47



5.1.9.1 During the 1<sup>st</sup> year of the XII Five Year Plan, ^ 152.22 crores was invested for various development programmes implemented by forestry sector. Out of this, an expenditure of ^ 127.47 crores has been incurred.

The financial targets and achievements for various departmental schemes from 2007-08 to 2012-13 are given below.

Year	(^ in lakhs)					
	2007-08 to 2011-12		2012-2013		Progressive Total	
	Targets	Achievements	Targets	Achievements	Targets	Achievements
<b>Schemes</b>						
<b>State Sector Schemes (A)</b>						
<b>Management of Natural Forests</b>						
(a) Survey of Forest Boundaries	973.25	871.20	100.00	108.24	1073.25	979.44
(b) Forest Protection	5753.65	5476.20	1850.00	1807.44	7603.65	7283.64
c) Regeneration of Denuded Forests	960.00	913.16	50.00	48.24	1010.00	961.40
Improving Productivity of Plantations	2232.00	2038.99	670.00	662.78	2902.00	2701.77
Roads	629.50	478.27	300.00	257.40	929.50	735.67
Buildings	1019.75	843.10	400.00	390.73	1419.75	1233.83
Bio-diversity Conservation and Protected Area Management	5313.93	4101.99	2800.04	2628.04	8113.97	6730.03
Eco-tourism	485.00	413.29	300.00	287.52	785.00	700.81
Human Resources Management	560.50	501.01	250.00	237.82	810.50	738.83
Resources Planning and Research	230.00	194.29	50.00	49.51	280.00	243.80
Extension Forestry	2479.50	2377.19	750.00	707.40	3229.50	3084.59
FM IS & GIS	450.00	401.30	150.00	149.99	600.00	551.29
Management of Non-wood Forest Products	742.85	642.43	148.00	130.84	890.85	773.27
Kerala Forestry Project	0.01	22.59	0.00	0.00	0.01	22.59

Year	(` in lakhs)					
	2007-08 to 2011-12		2012-2013		Progressive Total	
	Targets	Achievements	Targets	Achievements	Targets	Achievements
<b>Schemes</b>						
<b>State Sector Schemes (A)</b>						
Works with assistance under Rural Infrastructure Development Fund	2886.00	1255.57	600.00	350.00	3486.00	1605.57
12th Finance Commission Award	1875.01	1701.28	0.00	0.00	1875.01	1701.28
13th Finance Commission Award	2070.50	1958.43	3388.00	2671.13	5458.50	4629.56
Integrated Forest Management	971.37	566.88	100.00	68.36	1071.37	635.24
Theeravana Samrakshana Padhathi	0.01	0.00	0.00	0.00	0.01	0.00
<b>Total (A)</b>	<b>29632.83</b>	<b>24757.16</b>	<b>11906.04</b>	<b>10555.43</b>	<b>41537.87</b>	<b>35312.60</b>
<b>Break-up of Centrally Sponsored Schemes(CSS) - (B)</b>						
100% CSS	5692.95	3455.20	1616.00	1023.16	7308.95	4478.36
75% CSS (IFM)	2914.12	1691.66	300.00	205.07	3214.12	1896.73
50% CSS (Sanctuaries & National Parks)	4485.85	3851.28	1400.00	963.93	5885.85	4815.21
<b>Total CSS (B)</b>	<b>13092.92</b>	<b>8998.14</b>	<b>3316.00</b>	<b>2192.16</b>	<b>16408.92</b>	<b>11190.30</b>
<b>Total Plan</b>	<b>42725.75</b>	<b>33755.30</b>	<b>15222.04</b>	<b>12747.59</b>	<b>57947.79</b>	<b>46502.90</b>

**5.1.9 Outlay and Expenditure under Plan Schemes:** - During 2012-2013, an expenditure of `12747.59 lakhs was incurred against the budget provision of `15222.04 lakhs. Details of budget head wise allotment and expenditure are shown below.

Sl. No.	Scheme & Head of Account	Financial (`in lakhs)	
		Budget Outlay	Expenditure
1	2	3	4
<b>A. State Sector Schemes and schemes with 50% CSS</b>			
<b>I</b>	<b>Management of Natural Forests</b>		
1	Forest Protection (2406-01-800-95)	1250.000	1232.053
2	Regeneration of Denuded Forests	50.000	48.235

Sl. No.	Scheme & Head of Account	Financial ('in lakhs)	
		Budget Outlay	Expenditure
	(2406-01-101-94)		
3	Survey of Forest Boundaries (2406-01-800-99)	60.000	68.090
	<b>Sub Total</b>	<b>1360.000</b>	<b>1348.378</b>
<b>II</b>	<b>Improving Productivity of Plantations</b>		
1	Hard Wood Species (4406-01-105-87)	120.000	117.277
2	Industrial Raw Materials (4406-01-105-85)	550.000	545.506
	<b>Sub Total</b>	<b>670.000</b>	<b>662.783</b>
<b>III</b>	<b>Infrastructure</b>		
1	Roads (4406-01-070-99)	300.000	257.403
2	Buildings (4406-01-070-97)	400.000	390.725
3	Works with assistance from RIDF (4406-01-800-90)	600.000	349.997
4	Survey of Forest Boundaries (4406-01-800-89)	40.000	40.149
5	Forest Protection (4406-01-800-88)	600.000	575.390
6	Mtce of Forest under XIII Fin Commission Recommendations ( 2406-01-101-84 )	3388.000	2671.130
	<b>Sub Total</b>	<b>5328.000</b>	<b>4284.794</b>
<b>IV</b>	<b>Bio-diversity Conservation and PA Management</b>		
<b>a</b>	<b>State Schemes 100%</b>		
1	Orchid Garden at Wagamon (2406-01-101-82)	50.010	50.000
2	Measures to reduce Man Animal conflict (2406-01-800-56)	300.000	248.032
3	Conservation of Biodiversity (2406-02-110-68)	500.000	527.154
4	Eco Development Programme ( 2406-02-110-56 )	100.000	105.757
5	Zoological Park, Wildlife Protection and Research Centre, Puthur (2406-02-110-48)	250.010	250.000
6	Gandhi Smrithi Vanam, Purakkad (2406-02-110-47)	100.010	100.000
7	Elephant Care Centre, Kottur & Kappukad (2406-02-110-46)	100.010	100.000
	<b>Sub Total</b>	<b>1400.040</b>	<b>1380.943</b>
<b>b</b>	<b>50% Centrally Sponsored Schemes</b>		
1	Parambikulam Game Sanctuary	180.000	154.912

Sl. No.	Scheme & Head of Account	Financial ('in lakhs)	
		Budget Outlay	Expenditure
	(2406-02-110-98)		
2	Neyyar Game Sanctuary (2406-02-110-97)	75.000	76.585
3	Wayanad Game Sanctuary (2406-02-110-96)	110.000	112.341
4	Development of National Park at Eravikulam (2406-02-110-94)	80.000	82.380
5	Periyar Tiger Reserve (2406-02-110-93)	273.000	163.425
6	Development of National Park Biosphere Research at Silent Valley (2406-02-110-91)	125.000	119.777
7	Wildlife Sanctuary - Idukki (2406-02-110-90)	65.000	65.134
8	Wildlife Sanctuary - Peechi, Vazhani (2406-02-110-89)	50.000	47.871
9	Wildlife Sanctuary-Peppara (2406-02-110-88)	35.000	34.646
10	Wildlife Sanctuary - Shendurney (2406-02-110-87)	40.000	43.413
11	Wildlife Sanctuary - Chimmoney (2406-02-110-86)	40.000	39.967
12	Wildlife Sanctuary - Aralam (2406-02-110-85)	60.000	57.423
13	Wildlife Sanctuary -Chinnar (2406-02-110-84)	55.000	54.994
14	Bird Sanctuary at Thattekkad (2406-02-110-83)	50.000	50.488
15	Development of Anamudi National Park (2406-02-110-64)	25.000	25.125
16	Development of Mathikettan National Park ( 2406-02-110-63 )	30.000	30.506
17	Development of Pampadum National Park ( 2406-02-110-62 )	30.000	32.420
18	Mangalavanam Bird Sanctury (2406-02-110-61)	15.000	6.769
19	Kurinjimala Sanctury (2406-02-110-58)	20.000	20.007
20	Agasthyamala Landscape Project (2406-02-110-57)	2.000	0.000
21	Chulannur Peacock Sanctuary (2406-02-110-54)	20.000	13.356
22	Malabar Wildlife Sanctury (2406-02-110-53)	20.000	15.560
	<b>Sub Total</b>	<b>1400.000</b>	<b>1247.098</b>
<b>V</b>	<b>Eco-Tourism (4406-01-800-91)</b>	<b>300.000</b>	<b>287.519</b>
<b>VI</b>	<b>Human Resource Development</b>		

Sl. No.	Scheme & Head of Account	Financial (in lakhs)	
		Budget Outlay	Expenditure
1	Training (2406-01-003-99)	250.000	237.822
<b>VII</b>	<b>Resource Planning &amp; Research</b>		
1	Forest Research (2406-01-004-99)	30.000	29.937
2	Forest Resources Survey Cell (2406-01-005-99)	20.000	19.573
	<b>Sub Total</b>	<b>50.000</b>	<b>49.510</b>
<b>VII I</b>	Forest Publicity (2406-01-800-98)	<b>750.000</b>	<b>707.397</b>
<b>IX</b>	NWFP (2406-01-800-65)	<b>80.000</b>	<b>65.139</b>
<b>X</b>	Promotion of Medicinal Plants (2406-01-800-63)	<b>68.000</b>	<b>65.699</b>
<b>XI</b>	FM IS&GIS (2406-01-800-57)	<b>150.000</b>	<b>149.992</b>
<b>XII</b>	<b>Intensification of Forest Management Scheme (2406-01-800-61)(25%STATE)</b>	<b>100.000</b>	<b>68.357</b>
	<b>Total ( A )</b>	<b>11906.040</b>	<b>10555.433</b>
<b>B. Centrally Sponsored Schemes having 75% Central Share</b>			
1.	Intensification of Forest Management Scheme (2406-01-800-61)(75%CSS)	<b>300.000</b>	<b>205.072</b>
<b>C. Centrally Sponsored Schemes having 100% Central Share</b>			
1	Nilgiri Biosphere Reserve (2406-02-110-80)	150.000	17.414
2	Project Elephant (2406-02-110-71)	350.000	245.572
3	Agasthyamala Biosphere Reserve (2406-02-110-66)	72.000	19.840
4	Wetland Conservation (2406-01-800-60)	120.000	56.334
5	Wildlife Protection Outside Protected Areas (2406-02-110-52)	0.000	0.000
6	Kadalundi-Vallikunnu CR (2406-02-110-51)	0.000	0.000
7	Indiragandhi Bio-diversity Conservation, Research and Monitoring Centre (2406-02-110-50)	240.000	0.000
8	Integrated Development of Wildlife Habitats to Wayanad Wildlife Sanctuary for voluntary relocation of two settlements from PA (2406-02-110-49)	684.000	684.000
	<b>100% CSS Total ( C )</b>	<b>1616.000</b>	<b>1023.160</b>
<b>D CENTRALLY SPONSORED SCHEMES HAVING 50% CENTRAL SHARE</b>			
1	Parambikulam Game Sanctuary (2406-02-110-98)	180.000	226.610

Sl. No.	Scheme & Head of Account	Financial ('in lakhs)	
		Budget Outlay	Expenditure
2	Neyyar Game Sanctuary (2406-02-110-97)	75.000	23.100
3	Wayanad Game Sanctuary (2406-02-110-96)	110.000	70.148
4	Development of National Park at Eravikulam (2406-02-110-94)	80.000	23.717
5	Periyar Tiger Reserve (2406-02-110-93)	273.000	272.837
6	Development of National Park Biosphere Research at Silent Valley (2406-02-110-91)	125.000	37.952
7	Wildlife Sanctuary - Idukki (2406-02-110-90)	65.000	30.216
8	Wildlife Sanctuary - Peechi, Vazhani (2406-02-110-89)	50.000	31.360
9	Wildlife Sanctuary - Peppara (2406-02-110-88)	35.000	22.300
10	Wildlife Sanctuary - Shendurney (2406-02-110-87)	40.000	20.828
11	Wildlife Sanctuary - Chimmoney (2406-02-110-86)	40.000	26.820
12	Wildlife Sanctuary - Aralam (2406-02-110-85)	60.000	29.600
13	Wildlife Sanctuary - Chinnar (2406-02-110-84)	55.000	28.085
14	Bird Sanctuary at Thattekkad (2406-02-110-83)	50.000	27.220
15	Development of Anamudi National Park (2406-02-110-64)	25.000	18.524
16	Development of Mathikettan National Park ( 2406-02-110-63 )	30.000	16.882
17	Development of Pampadum National Park ( 2406-02-110-62 )	30.000	16.215
18	Mangalavanam Bird Sanctury ( 2406-02-110-61 )	15.000	5.746
19	Kurinjimala Sanctury ( 2406-02-110-58 )	20.000	15.164
20	Agasthyamala Lanscape Project ( 2406-02-110-57 )	2.000	0.000
21	Chulannur Peacock Sanctuary (2406-02-110-54)	20.000	5.440

Sl. No.	Scheme & Head of Account	Financial (in lakhs)	
		Budget Outlay	Expenditure
22	Malabar Wildlife Sanctuary ( 2406-02-110-53 )	20.000	15.165
	<b>50% CSS Total ( D )</b>	<b>1400.000</b>	<b>963.929</b>
	<b>Grand Total ( A + B + C + D )</b>	<b>15222.040</b>	<b>12747.595</b>

**5.1.10 Outlay and Expenditure under Non Plan Schemes:** - An expenditure of ₹245.76 lakhs was incurred against the budget provision of ₹245.78 lakhs during 2012-2013. Details on budget head wise allotment and expenditure are shown below.

Sl. No.	Scheme & Head of Account	2012-2013 ( in Lakhs )	
		Outlay	Expenditure
<b>I</b>	<b>Direction &amp; Administration (2406-01-001)</b>		
1	Office of the Chief Conservator of Forests (2406-01-001-99)	884.160	985.265
2	Office of the Circle Conservator of Forests (2406-01-001-98)	465.300	461.127
3	Working Plan & Research Circle (2406-01-001-97)	77.900	52.983
4	Vigilance & Evaluation Wing (2406-01-001-96)	1,006.570	938.430
5	District Offices (2406-01-001-95)	6,021.870	7,263.283
6	Statistical Cell (2406-01-001-94)	18.050	19.649
7	Timber Sales Division (2406-01-001-93)	369.090	391.332
8	FD Fund Collection of add. tax on sales of Forest Produce (2406-01-001-92)	0.100	-
	<b>Sub Total</b>	<b>8,843.040</b>	<b>10,112.069</b>
<b>II</b>	<b>Statistics (2406-01-013)</b>		
1	Planning & Statistical Cell (2406-01-013-99)	146.570	90.709
	<b>Sub Total</b>	<b>146.570</b>	<b>90.709</b>
<b>III</b>	<b>Communication &amp; Buildings (2406-01-070)</b>		
1	Roads & Bridges (2406-01-070-99)	36.000	26.278

Sl. No.	Scheme & Head of Account	2012-2013 (` in Lakhs )	
		Outlay	Expenditure
2	Buildings (2406-01-070-98)	75.750	65.239
	<b>Sub Total</b>	<b>111.750</b>	<b>91.517</b>
<b>IV</b>	<b>Forest Conservation Development &amp; Regeneration (2406-01-101)</b>		
1	Forest Consolidation & Acquisition of Private Forests (2406-01-101-99)	2,089.160	2,362.005
2	Working Plans, Evaluation Survey, etc. (2406-01-101-98)	2.500	1.156
3	Silvicultural Research (2406-01-101-97)	8.000	7.575
4	Fire Protection Work (2406-01-101-96)	16.690	9.314
5	Compensatory Afforestation (2406-01-101-92)	185.000	152.583
6	Amount met out of KFDF for Planting Softwood Trees (2406-01-101-91)	125.000	122.368
7	Transfer to the Fund for Teak under the Kerala Forest Revolving Fund for Teak and Pulpwood Rules,1999- (2406-01-101-90)	877.320	874.320
8	Transfer to the Fund for Pulpwood under the Kerala Forest Revolving Fund for Teak and Pulpwood Rules,1999- (2406-01-101-89)	438.000	420.000
9	Amount met out of KFDF for Teak and Pulpwood – Teak (2406-01-101-88)	877.320	874.320
10	Amount met out of KFDF for Teak and Pulpwood - Pulpwood (2406-01-101-87)	438.000	420.000
11	Priority Scheme Under 13 <sup>th</sup> Finance Commission Award(2406-01-101-84)	847.000	905.730
	<b>Sub Total</b>	<b>5903.990</b>	<b>6,149.371</b>
<b>V</b>	<b>Social &amp; Farm Forestry (2406-01-102)</b>		
1	Plantation of Fast Growing Species (2406-01-102-99)	227.780	184.325
2	Ecology Development World Bank assisted Social Forestry (2406-01-102-98)	1,439.010	1,456.624
3	Ecology Development World Bank assisted Social Forestry, Phase-II (2406-01-102-92)	108.260	86.915
	<b>Sub Total</b>	<b>1,775.050</b>	<b>1,727.864</b>
<b>VI</b>	<b>Forest Produces (2406-01-105)</b>		
1	Timber & Other Produces removed by Govt. Agencies (2406-01-105-99)	1,975.000	2,054.685



Sl. No.	Scheme & Head of Account	2012-2013 (^ in Lakhs )	
		Outlay	Expenditure
2	Firewood & Charcoal removed by Govt. Agencies (2406-01-105-98)	15.000	9.234
3	Other Produce removed by Govt. Agencies (2406-01-105-97)	0.100	0
4	Timber & Other Produces removed by Consumers (2406-01-105-96)	0.100	0.100
5	Confiscated Forest Produce Drift wood, etc. (2406-01-105-95)	2.000	0.799
6	Livestock (2406-01-105-94)	234.000	231.609
7	Miscellaneous Advance Suspense (2406-01-105-93)	33.000	27.743
8	Teakwood (2406-01-105-92)	351.230	329.724
9	Softwood (2406-01-105-91)	37.240	52.773
	<b>Sub Total</b>	<b>2,647.670</b>	<b>2,706.667</b>
<b>VII</b>	<b>Education &amp; Training (2406-01-003)</b>		
1	Training (2406-01-003-99)	232.000	175.944
	<b>Sub Total</b>	<b>232.000</b>	<b>175.944</b>
<b>VIII</b>	<b>Forest Research (2406-01-004)</b>		
1	Payment out of the KFDF for Forest Research (2406-01-004-95)	65.000	41.321
2	Forest Research & Training (2406-01-004-99)	33.770	43.603
	<b>Sub Total</b>	<b>98.770</b>	<b>84.924</b>
<b>IX</b>	<b>Forest Resources Survey</b>		
1	Forest Resources Survey (2406-01-005-99)	42.470	37.805
	<b>Sub Total</b>	<b>42.470</b>	<b>37.805</b>
<b>X</b>	<b>Other Expenditure (2406-01-800)</b>		
1	Survey of Forest Boundaries (2406-01-800-99)	46.640	112.949
2	Forest Publicity(2406-01-800-98)	61.160	48.261
3	Forest Protection (2406-01-800-95)	3,223.510	2,067.545
4	Intensification of Forest Management (2406-01-800-93)	213.490	85.855
5	Relief to Victims Affected by the attack of Wild Animals (2406-01-800-92)	120.000	113.448
6	Rewards to Informants (2406-01-800-91)	0.750	0.290
7	Subsidy to KFDC (2406-01-800-72)	0.010	-

Sl. No.	Scheme & Head of Account	2012-2013 (` in Lakhs )	
		Outlay	Expenditure
	<b>Sub Total</b>	<b>3,665.560</b>	<b>2,428.348</b>
<b>XI</b>	<b>Wildlife Preservation (2406-02-110)</b>		
1	Wildlife Preservation (2406-02-110-99)	735.240	621.280
2	Periyar Tiger Reserve Project (2406-02-110-93)	108.550	105.886
3	Conservation of Bio-diversity (2406-02-110-68)	127.100	63.082
4	Eco-Development Global Environmental Facilities ( 2406-02-110-69)	140.650	180.595
	<b>Sub Total</b>	<b>1111.540</b>	<b>970.843</b>
	<b>Grand Total</b>	<b>24,578.410</b>	<b>24,576.061</b>

- The expenditure towards salary, wages, travel expenses, and publicity are `17483.83 lakhs, `337.29 lakhs, `113.44 lakhs and `707.40 lakhs respectively.
- PD accounts are operated in the department for Teak/Pulpwood Revolving Funds as per the Teak & Pulpwood Rules, 1999. Savings Bank accounts are also maintained for the works undertaken by FDAs, NMPB and NAP.

**5.1.11 Funds received directly from Government of India:-**The scheme-wise funds received directly from Government of India and the expenditure incurred during 2012-13 are as follows:

(` in lakhs)

Scheme	Amount Released			Expenditure Incurred		
	Till 31 <sup>st</sup> March 2012	During 2012-13	Total	Till 31 <sup>st</sup> March 2012	During 2012-13	Total
NMPB	456.12	201.21	<b>657.33</b>	287.38	84.09	<b>371.47</b>
NAP	5514.58	1003.15	<b>6517.73</b>	5430.26	842.56	<b>6272.82</b>

Scheme	Amount Released			Expenditure Incurred		
	Till 31 <sup>st</sup> March 2012	During 2012-13	Total	Till 31 <sup>st</sup> March 2012	During 2012-13	Total
WGDP	572.32	220.25	<b>792.57</b>	421.57	198.22	<b>619.79</b>
CAMPA	175.09	136.52	<b>311.61</b>	95.85	37.40	<b>133.25</b>
GIM	194.60	0.00	<b>194.60</b>	0.00	117.30	<b>117.30</b>
JICA Project	756.78	0.00	<b>756.78</b>	84.58	29.23	<b>113.81</b>

**5.1.12 Workdone during the year for other Government Departments and expenditure incurred:** - As per Indira Awas Yojana (IAY) scheme, construction of 45 houses for ST families are in progress in Alimoooppa Colony, Thekkady Kollengode Range (Kollengode Block Panchayath). Out of total allotment of ₹112.5 lakhs received, and amount of ₹22.69 lakhs has been utilized. Construction of a Pre – metric hostel using SC/ST fund of ₹31.74 lakhs was carried out through Forest Development Agency in Parambikulam Tiger reserve. Construction of houses for Tribals was also carried out in this region using ₹9.71 lakhs allotted from Panchayath.

## Chapter VI

### INFRASTRUCTURE

#### 6.1 Roads

6.1. The details of roads maintained by the Kerala Forest Department as on 31.03.2013 are shown below.

<b>Sl. No.</b>	<b>Type of Road</b>	<b>Length (Km)</b>
1	Cement Concrete	8.013
2	Black Topped	364.909
3	Metalled	777.551
4	Earthern Road(Un-Surfaced)	2512.060
5	Non-Motorable	808.635
	<b>Total</b>	<b>4471.168</b>

#### 6.2 Buildings

Details of buildings maintained by the KFD as on 31-03-2013 are shown below.

<b>Sl. No.</b>	<b>Item</b>	<b>Number</b>
1	Office Buildings	309
2	Rest Houses / Government Cottages	65
3	Residential Quarters	1168
4	Other Quarters	22
5	Dormitories	50
6	Community Halls	38
7	Forest Stations and associated buildings	150
8	Other Buildings	968
	<b>Total</b>	<b>2770</b>

#### 6.3 Vehicles

6.3.1 Kerala Forest Department possesses 654 different types of

vehicles. Of these, 598 are in running condition and 56 are not in running condition. The detailed list is shown below.

Sl. No.	Vehicles	No. of vehicles		Total Number of Vehicles
		In running condition	Not in running condition	
1	Ambassador Car	37	8	45
2	Boat	21	2	23
3	Bolero	102	6	108
4	Jeep	212	26	238
5	Thar jeep	31	0	31
6	Invader	12	0	12
7	Maruthy Gypsy	1	0	1
8	Mini Bus	8	0	8
9	Mini Van	2	0	2
10	Mini Lorry	3	1	4
11	Motor Cycle	106	47	153
12	Qualis	9	0	9
13	Tata Mobile	0	2	2
14	Tata Spacio	1	0	1
15	Tata Sumo	1	0	1
16	Other Cars	18	1	19
17	Tata Winger	2	1	3
18	Road Roller	0	1	1
19	Fire Tender Machine	0	1	1
20	Machine Tourer	1	1	2
	<b>Total</b>	<b>567</b>	<b>97</b>	<b>664</b>

**6.3.2 Purchase of Vehicles:** - During 2012-13, KFD purchased 22 vehicles (7 Boleros and 15 Thar jeeps) at a total expense of ₹113.71 lakhs.

**6.3.3 Disposed Vehicles;** - Details of vehicles disposed are shown below.  
Car -06, Jeep - 10, M. Cycle - 08, Mini Lorry – 02, Road Roller – 01.

#### 6.4 Arms & Ammunition

Necessary arms & ammunition have been provided to the Divisional Forest Officers, Range Officers and Forest Station staff in vulnerable areas for effective protection of forests and wildlife. The details as on 31-03-2013 are as shown below

Sl. No.	Circle	No. of Rifles	No. of Revolvers	No. of Ammunition (Catridges & Bullets)
1	Kollam	21	09	232
2	Kottayam	47	06	331
3	Thrissur	31	05	109
4	Palakkad	36	10	522
5	Kannur	26	04	596
6	Agasthyavanam Biological Park, Thiruvananthapuram	13	05	1377
7	Field Director Project Tiger, Kottayam	91	19	1946
8	Wildlife, Palakkad	81	17	1880
9	Inspection & Evaluation, Kottayam	14	6	278
10	Inspection & Evaluation, Kozhikode	12	4	252
11	Estate Office, FHQ, Tvp. m.	10	0	4065
	<b>Total</b>	<b>382</b>	<b>85</b>	<b>11588</b>

## **Chapter VII**

### **MISCELLANEOUS**

#### **7.1 Departmental Publications**

From January 2013 onwards, 'Aranyam', the departmental publication has been remodified and is now a bimonthly publication. Compound wall around Forest Headquarters has been repainted and has been made attractive with display boards and slogans promoting the preservation of forest wealth. "An Index to the Important Forest Plants of Kerala" is a book which was bought out during this year. Pocket Diary (5000 copies), Forest Statistics 2011 (1000 copies), Forest Guide (10000 copies), Forest Calendar (10000 copies) were the other publications bought out by the department during this year.

#### **7.2 Adalats**

During 2012-13, File Adalaths, for speedy disposal of files were conducted at Forest Headquarters and various sub offices. Adalath for Wood Based Industries was conducted at Nilambur South Division.

#### **7.3 Seminars, Conferences & Workshops**

During 2011-12, two medical camps and one awareness camp was conducted by Southern Circle, Kollam. Six fire awareness programmes and one FDA workshop were conducted by High Range Circle, Kottayam. A seminar was conducted in Central Circle, Thrissur on the occasion of inaugural function of the construction of Zoological Park at Puthur. A workshop for the training of mahouts and elephant owners, campaigns on fire Protection, wildlife protection and anti-plastic were also organized by Central Circle Thrissur. Seminars, conferences and workshops regarding VSS activities, PRA micro planning, value addition of MFP, basic knowledge about medicinal plants and its nursery formation, honey hunting forest fire etc were organized by Eastern Circle, Palakkad. A workshop on Green India Mission and Nature awareness campaigns were also organized. Seven nature awareness camps and a seminar on biodiversity conservation were organized by Northern Circle, Kannur. Law enforcement workshop was conducted by Wildlife Palakkad on 21.11.2012. Workshops for the declaration of Eco-sensitive zones were

also organized by this circle. Oneday workshops on medicinal plant cultivation and its marketing were organized by Social Forestry Circle, Kozhikode. Apart from these various 'fire awareness' programmes and rallies promoting conservation of Forests were organized by all circles in connection with wildlife week celebrations and other special occasions.

#### **7.4 Fairs and Exhibitions**

KFD ensured its participation in Bamboo fest and co-operative expo took place in Ernakulam and Thrissur respectively. Onam Metro Fairs, Pooram Exhibition, various local festivals and various fests organized by the Government and Non-Government Organizations. Literary & painting competitions and rallies in connection with Wildlife Week celebrations were organized in various circles/divisions. As part of protection strategies, EDCs of respective FDAs in Thiruvananthapuram and Sendurney division conducted bike rallies, campaigns, processions and other sensitization programmes during the year.

**7.5 Implementation of the Right to Information Act:** - The Right to Information Act is being effectively implemented in the KFD. Out of the 3244 applications received, 3224 were disposed of, 17 were rejected and 03 cases were pending as on 31.03.2013. The details are furnished below.

##### **7.5.1 Suo Moto disclosure under Section 4(1) (b)**

No. of Public Authorities	No. of Public Authorities which published the 17 Manuals under Section 4(1)(b)	No. of Public Authorities which updated the 17 Manuals during the Year	No. of Public Authorities which displayed the 17 Manuals Online
<b>1</b>	<b>0</b>	<b>0</b>	<b>1</b>

##### **7.5.2 Designation of Information Officers / Appellate Officers**

No. of Public Authorities	No. of Public Information Officers Designated	No. of Assistant Public Information Officers Designated	No. of Appellate Officers Designated
<b>1</b>	<b>329</b>	<b>0</b>	<b>115</b>



### 7.5.3 Disposal of Information requests by Public Information Officers (Directly requested)

No. of Requests Pending at the end of Last Year	No. of Requests Received during the Year 2012-13	Total No. of Requests	No. of Requests Disposed	No. of Requests Rejected
<b>18</b>	<b>3226</b>	<b>3244</b>	<b>3224</b>	<b>17</b>

### 7.5.4 Information requests rejected by Public Information Officers (Directly requested)

Total No. of Requests Rejected	No. of Requests Rejected Under Section 8	No. of Requests Rejected Under Section 9
<b>17</b>	<b>17</b>	<b>0</b>

### 7.5.5 Disposal of first appeals by Designated Appellate Officers

No. of first Appeals pending with Appellate Officers as on 31-03-12	No. of first Appeals preferred during the Year 2012-13	Total No. of first Appeals with Appellate Officers	No. of First Appeals disposed	No. of First Appeals rejected	No. of First Appeals pending for more than 45 days
<b>-</b>	<b>53</b>	<b>53</b>	<b>53</b>	<b>-</b>	<b>-</b>

### 7.5.6 Penalties Imposed & Collected

Details of Penalties imposed by Information Commission under Section 20(1)	Details of Penalties Collected
<b>Nil</b>	<b>Nil</b>

### 7.5.7 Disciplinary action taken against officers in respect of administration of RTI Act

Details of Disciplinary Action Recommended by Information Commission under Section 20 (2)	Details of Disciplinary Action Taken based on Recommendation of Information Commission	Other Disciplinary Actions Taken (Other than those recommended by IC)
<b>Nil</b>	<b>Nil</b>	<b>Nil</b>

### 7.5.8 Summary costs, fees and charges collected by Public Authorities

(in ^)

Cost collected Section 4(4)	Fee collected Section 6(1)	Fee Collected Section 7(1)	Fee Collected Section 7(5)	Other charges collected (Specify) Under Section 7(3) (a)	Total Collection
<b>3717</b>	<b>16191</b>	<b>17279</b>	<b>10701</b>	<b>27610</b>	<b>75498</b>

The list of State Public Information Officers and Appellate Authorities of the department is at *Annexure 4*.

### 7.6 The Scheduled Tribes and Other Traditional Forest Dwellers (Recognition of Forest Rights) Act, 2006:-

The Scheduled Tribes and Other Traditional Forest Dwellers (Recognition of Forest Rights) Act, 2006 is being implemented in Kerala as per G.O (Rt) No. 207/2008/ SCSTDD dated 25.02.2008. The Act in the State is being implemented through Scheduled Tribes Development, Forests & Wildlife, Revenue and Local Self Government Departments. Three tier committees have been constituted for implementing the Act. The details of the Committees are as follows:

- Sub Division level Committee**

RDO / Sub-Collector	-	Chairman
Range Officer	-	Member
Tribal Extension Officer	-	Member

- Division Level Committee**

District Collector	-	Chairman
--------------------	---	----------

Divisional Forest Officer	-	Member
Range Officer/ITDP/TDO	-	Member
<b>• State Level Committee</b>		
Chief Secretary	-	Chairman
Secretary, SCSTDD	-	Member
Secretary, F&WLD	-	Member
Secretary, LSGD	-	Member
Secretary, Revenue Dept	-	Member
Principal CCF	-	Member
Director, STDD	-	Member

7.6.1 The Recognition of Forest Rights Act 2006 is definitely an advance in the administration of social justice and forest management.

7.6.2 The Scheduled Tribes Development Department has been designated as the Nodal Department for the implementation of the Tribal Rights Act. State Government have constituted a Working Group on 25.02.2008 for constitution of various committees and for preparing master plan for implementation of the Act and to assign responsibilities to various departments, especially Forest, Revenue, Local Self Government and SC/ST Departments.

7.6.3 The Forest Rights implementation process in the State was started on 08.01.2008 and 511 Grama Sabhas, 14 Sub Division Level Committee (SDLC) and 12 Division Level Committee (DLC) have been formed. As on 31.03.2013, out of 25495 individual claims passed by DLC, 24423 rights were issued for an area of 32940 acres. The implementation of the Forest Right Act, 2006 is fast progressing in the State.

## **7.7 Internal Control System**

7.7.1 As per the Public Accounts Committee's (PAC) recommendations in 57<sup>th</sup> report (2001-2004), Internal Audits should be conducted in all the offices of the forest department every year just before Accountant General's audit, in order to reduce observations/audit paras. Since Internal Audit (IA) units were found not sufficient to meet the

requirement, action has been taken to constitute one more unit of IA Wing.

7.7.2 During the year five number of circle level Audit committee meetings were held in coordination with the Accountant General, Thrissur and 206 paras out of 283 paras pending were settled. Audit committee meetings are proposed to be held in other circles also. The progress is also monitored. Regarding pending PAC recommendations, out of 91, which were pending as on 01.04.2011, 71 paras have been cleared and replies to other paras have been submitted to Government.

### **7.8 Grievance Redressal Cell**

A grievance Redressal Cell is functioning in the department for dealing with the complaints from public and staff. Consequent to the direction of the Hon'ble Supreme Court, a complaint committee in connection with 'sexual harassment against women at working places' has been formed at forest headquarters vide Order No. E6 28827/2004 dated 26.02.2008 of the Principal Chief Conservator of Forests. This committee has the right to receive complaints from employees of KFD regarding sexual harassment at work place, conduct enquiry on the complaints received, to take necessary decision on the complaints received and to submit recommendations to the Department Head. The details of the committee are as follows

Smt. Sobhana Kamala Sudarshana Rao, Chief Conservator of Forests	- Chair Person
Smt. Deepa. D. Nair, Deputy Conservator of Forests	- Member
Smt. Kochumol K.U, Personal Assistant	- Member
Smt. Mary Raseela, U.D Clerk	- Member
Sri. T. Pradeepkumar, Deputy Conservator of Forests	- Member

## **7.9 Implementation of Official Language Act**

As per the G.O No. 7223/OL3/85/P&ARD dated 01.09.1985 of the Personnel & Administrative Reforms Department, the official language of the department is Malayalam. However, the same could not be implemented fully. Efforts have been made to use Malayalam as official language fully and all staff of the department has been working earnestly in this direction. Communications are being done in Malayalam to the maximum extent. Instructions regarding the preparation of orders pertaining to transfer/promotion, proceedings, circular, etc in Malayalam are being implemented. All public notices are invariably prepared in Malayalam and name boards on all departmental vehicles have been written in Malayalam. Senior Administrative Officer of the department has been nominated as the Nodal Officer for supervising the progress in this regard. A translation cell has been constituted to translate the codes, manuals, rules, forms etc of the department vide G.O (MS) No. 19/83/P&ARD dated 16.07.2003.

## **7.10 Computerisation**

7.10.1 Computerization was done up to the Range/Depot level. The department has supplied necessary computers and accessories up to Range/Depot Offices. The KFD has hosted a website ([www.forest.kerala.gov.in](http://www.forest.kerala.gov.in)) which contains information about the functions of the KFD. It acts as a link between the department and the people.

**7.11 National sports meet 2012-13:- 20th** all India Forest Sports and Games meet 2012 was conducted at Panchkula in Haryana. Kerala State was represented by a team of 60 members. Kerala was placed 4<sup>th</sup> in the meet with 10 gold medals, 11 silver medals and 14 bronze medals.



**Annexure 2**

**Division wise no. of Range Offices and Check Posts as on 31.03.2012**

Sl. No	Division	Range		Check Post
Southern Circle - Kollam				
1	Thiruvananthapuram	Paruthipally	1	Parassala
		Kulathupuzha	2	Venkolla
		Palode	3	Mankayam
			4	Anappara
2	Thenmala	Thenmala	5	Nedumannurkadavu
		Aryankavu	6	Kottavasal
3	Punalur	Pathanapuram	7	Karavoor
		Anchal		
4	Achenkovil	Achenkovil	8	Kottavasal
		Kallar		
		Kanayar		
5	Konni	Konni	9	Athumpunkulam
		Naduvathumuzhy	10	Njanaval
			11	Padam
		Mannarappara	12	Mullumala
6	Ranni	Ranni	13	Laha
		Goodrical	14	Pampa Dam
			15	Kochandi
		Vadasserikkara	16	Vadasserikkara
			17	Maniyar
High Range Circle - Kottayam				
7	Kottayam	Kumili	18	Kumili
			19	Cumbummettu
		Erumeli	20	Pulluppara
			21	Vazhikadavu
		Ayyappancoil		
		Nagarampara		
8	Kothamangalam	Kaliyar		
		Mullaringad		
		Thodupuzha	22	Parakkavala
			23	Guruthikkavala
		Kothamangalam	24	Cheladu

Sl. No	Division	Range		Check Post
9	Munnar	Munnar		
		Neriyamangalam	25	Thalakkodu
		Adimali	26	Panamkutty
		Devikulam	27	Bodimettu
			28	Palar
10	Mankulam	Mankulam		
		Anakulam		
11	Marayoor	Marayoor	29	Chattamunnar
		Kanthalloor	30	Pius Nagar
Central Circle – Thrissur				
12	Thrissur	Vadakkancherry		
		Machadu		
		Pattikkadu		
13	Chalakudy	Pariyaram	31	Kappathodu
		Palappilly	32	Parakadavu
		Vellikulangara	33	Mattathoor
14	Vazhachal	Vazhachal		
		Athirappally		
		Kollathirumed		
		Charpa	34	Vazhachal
		Sholayar	35	Malakkappara
15	Malayattoor	Edamalayar		
		Kalady	36	Karakkadavu
			37	Kadappara
		Kodanadu		
		Kuttampuzha	38	Thattekadu
	Thundathil	39	Boothathankettu	
Eastern Circle - Palakkad				
16	Nenmara	Alathur		
		Nelliyampathy	40	Pothundi
		Kollengode	41	Gopalapuram
			42	Meenakshipuram



Sl. No	Division	Range		Check Post
17	Palakkad	Ottappalam		
		Olavakkode		
		Walayar	43	Walayar
18	Mannarkkad	Agali	44	Anakatty
			45	Keralamedu
		Attappadi		
		Mannarkkad	46	Anamooly
			47	Inchikunnu
19	Nilambur North	Nilambur		
		Edavanna	48	Vadapuram
		Vazhikkadavu	49	Anamari
20	Nilambur South	Kalikavu		
		Karulai	50	Cherupuzha
Northern Circle – Kannur				
21	Kozhikkode	Thamarassery		
		Kuttiyadi		
		Peruvannamoozh i		
22	Kannur	Kottiyoor	51	Iritty
		Kannavam		
		Thaliparamba		
23	Kasargode	Kasargode	52	Thalappad
			53	Kottyadi
		Kanjangad	54	Kallar
24	Wayanad North	Periya	55	Boys town
			56	Niravalipuzha
		Begoor		
		Mananthavadi		
25	Wayanad (South)	Meppadi	57	Choladi
		Kalpetta	58	Lakkidy
		Chethalayam		

Sl. No	Division	Range		Check Post
<b>Wildlife Circle</b>				
26	Thiruvananthapuram	Peppara	59	Kanithadam
		Neyyar		
		ABP Range		
27	Shenthurni	Shenthurni		
28	Periyar East	Thekkady	60	Thekkady
		Vallakkadavu	61	Pachakkanam
			62	Anathodu
			63	Vallakkadavu
		Periyar	64	Vellimala
29	Eravikulam	Eravikulam National Park	65	Rajamala
		Chinnar National Park	66	Chinnar
			67	Karimutti
		Shola National Park	68	Top station
			69	Methap
30	Periyar West	Pamba	70	4 <sup>th</sup> Mile
		Azhutha		
31	Idukki	Idukki	71	Vanmavu
		Thattekkad		
32	Wayanad	Muthanga	72	Muthanga
			73	Pazhoor
		Tholpetty	74	Tholpetty
			75	Bavali
		Kurichiyad	76	Kuppady (3 <sup>rd</sup> Mile)
		Batheri		
33	Parambikulam	Sungam	77	Anappadi
			78	Keerappadi
		Orukomban	79	Thoothanppara
		Parambikulam		
		Karimala		
34	Peechi	Chimmoni	80	Echippara
		Peechi		
35	Silent Valley	Silent Valley NP		
		Bhavani		
36	Aralam	Aralam		

**Annexure 3****The e-mail addresses and phone/fax numbers of officers**

<b>Sl. No.</b>	<b>DESIGNATION</b>	<b>Email ID</b>	<b>Phone</b>	<b>Fax</b>
1	Principal Chief Conservator of Forests	pccf.for@kerala.gov.in	0471 2339593	0471 2338808
2	Principal Chief Conservator of Forests (SF)	pccf-sf.for@kerala.gov.in	04712325364	04712325364
3	Principal Chief Conservator of Forests (WL) and Chief Wildlife Warden	cww.for@kerala.gov.in or pccf-dp.for@kerala.gov.in	04712321610	04712320554
4	Additional Principal Chief Conservator of Forests (WP&R)	apccf-wp.for@kerala.gov.in	04712337545	
5	Additional Principal Chief Conservator of Forests (D&P)	apccf-dp.for@kerala.gov.in	04712337545	
6	Additional Principal Chief Conservator of Forests (Regional South)	apccf-sr.for@kerala.gov.in	04742741872	04742741872
7	Additional Principal Chief Conservator of Forests (Regional North)	apccf-nr.for@kerala.gov.in	04952418400	04952415391
8	Additional Principal Chief Conservator of Forests (Administration)	apccf-admin.for@kerala.gov.in	0471 2338491	0471 2338491
9	Addl. Principal Chief Conservator of Forests (Development)	apccf-d.for@kerala.gov.in	0471 2337535	0471 2337538
10	Addl. Principal Chief Conservator of Forests (Protection)	apccf-pro.for@kerala.gov.in	0471 2327804	0471 2327804
11	Addl. Principal Chief Conservator of Forests (Vigilance)	apccf-vig.for@kerala.gov.in	0471 2321583	0471 2321583
12	Addl. Principal Chief Conservator of Forests (ED & Tw)	apccf-ed.for@kerala.gov.in	0471 2321847	0471 2321847
13	Additional Principal Chief Conservator of Forests (IHRD)	apccf-ihrd.for@kerala.gov.in	0471 2362291	0471 2362291
14	Additional Principal Chief Conservator of Forests (BDC)	apccf-bdc.for@kerala.gov.in	0471 2736327	0471 2736327
15	Chief Conservator of Forests (FMIS)	apccf-fmis.for@kerala.gov.in	0471 2337548	0471 2337548
16	Custodian of EFL	efl-ctdn.for@kerala.gov.in	04712529129	

<b>Sl. No.</b>	<b>DESIGNATION</b>	<b>Email ID</b>	<b>Phone</b>	<b>Fax</b>
17	Chief Conservator of Forests (SA&NO)	ccf-sa.for@kerala.gov.in	0471 2328347	0471 2328347
18	Chief Conservator of Forests (Tribal Mission)	ccf-tm.for@kerala.gov.in	04712529129	
19	Chief Conservator of Forests (WP & R)	ccf-wp.for@kerala.gov.in	0471 2322767	0471 2332556
20	Chief Conservator of Forests (TRC, Trivandrum)	ccf-trc.for@kerala.gov.in	0471 2365989	
21	Chief Conservator of Forests (Wildlife), Palakkad	ccf-wl-nr.for@kerala.gov.in	0491 2556393	0491 2554249
22	Chief Conservator of Forests (SF), Kollam	ccf-sf-klm.for@kerala.gov.in	0474 2750336	0474 2765227
23	Addl. Principal Chief Conservator of Forests (SF, Ernakulam)	ccf.sfctrl.for@kerala.gov.in	0484 2331448	0484 2331448
24	Chief Conservator of Forests (SF, Kozhikkode)	ccf-sf-n.for@kerala.gov.in	0495 2418500	0495 2418500
25	Chief Conservator of Forests (Southern Circle)	ccf-sc.for@kerala.gov.in	0474 2742660	0474 2743962
26	Chief Conservator of Forests (High Range Circle)	ccf-hrc.for@kerala.gov.in	0481 2312448	0481 2312591
27	Chief Conservator of Forests (central Circle)	ccf-cc.for@kerala.gov.in	0487 2423189	0487 2423189
28	Chief Conservator of Forests (Eastern Circle)	ccf-ec.for@kerala.gov.in	0491 2555389	0491 2552938
29	Chief Conservator of Forests, Northern Circle	ccf-nc.for@kerala.gov.in	0497 2760394	0497 2704911
30	Chief Conservator of Forests, Agasthyavanam Biological Park	ccf-abp.for@kerala.gov.in	0471 2325385	0471 2325385
31	Field Director, Project Tiger	fdptktym@gmail.com	0481 2311740	0481 2311741
32	Conservator of Forests (I & E, Northern Region)	cf-ie-nr.for@kerala.gov.in	0495 2416800	
33	Conservator of Forests (I & E, Southern Region)	cf-ie-sr.for@kerala.gov.in	0481 2312402	0481 2312402
34	Divisional Forest officer, Punalur Division	dfo-pnlr.for@kerala.gov.in	0475 2222621	
35	Divisional Forest officer, Ranni Division	dfo-ranni.for@kerala.gov.in	0473 5227558	
36	Divisional Forest officer, Konni Forest Division	dfo-kni.for@kerala.gov.in	0468 2242233	0468 2242391
37	Divisional Forest officer, Thenmala Division	dfo-then.for@kerala.gov.in	0475 2344521	

<b>Sl. No.</b>	<b>DESIGNATION</b>	<b>Email ID</b>	<b>Phone</b>	<b>Fax</b>
38	Divisional Forest officer, Thiruvananthapuram Division	dfo.tvm.for@kerala.gov.in	0471 2320637	
39	Divisional Forest officer, Achenkovil Division	dfo.akvl.for@kerala.gov.in	0475 2342315	
40	Divisional Forest officer, Punalur Timber Sales Division	dfo.ts.pnlr.for@kerala.gov.in	0475 2222617	0475 2222617
41	Divisional Forest officer, Thiruvananthapuram Timber Sales Division	dfo-ts-tvm.for@kerala.gov.in	0471 2360166	0471 2360166
42	Divisional Forest officer, Kottayam Division	dfo-ktym.for@kerala.gov.in	0481 2562276	0481 2562276
43	Divisional Forest officer, Mankulam Division	dfo-mklm.for@kerala.gov.in	0486 4223915	
44	Divisional Forest officer, Marayoor Division	dfo-mryr.for@kerala.gov.in	0486 5252988	
45	Divisional Forest officer, Munnar Division	dfo-mnr.for@kerala.gov.in	04865264237	04865264327
46	Divisional Forest officer, Kothamangalam Division	dfo-kglm.for@kerala.gov.in	0485 2822317	0485 2822317
47	Divisional Forest officer, Kottayam Timber Sales Dn	dfo-ts-ktym.for@kerala.gov.in	0481 2312008	
48	Divisional Forest officer, Thrissur Division	dfo-tsр.for@kerala.gov.in	0487 2361268	0487 2361268
49	Divisional Forest officer, Vazhachal Division	dfo-vzcl.for@kerala.gov.in	0480 2701713	0480 2701713
50	Divisional Forest officer, Chalakudy Division	dfo.clkdy.for@kerala.gov.in	0480 2701340	
51	Divisional Forest officer, Malayattur Division	dfo-mytr.for@kerala.gov.in	0484 2649052	0484 2649052
52	Divisional Forest officer, Timber Sales Division, Perumbavoor	dfo-ts-pbvr.for@kerala.gov.in	0484 2522219	0484 2522219
53	Divisional Forest officer, Palakkad Division	dfo-plkd.for@kerala.gov.in	0491 2555156	0491 2555156
54	Divisional Forest officer, Nemmara Division	dfo-nenmara.for@kerala.gov.in	0492 3243179	0492 3243179
55	Divisional Forest officer, Nilambur (North) Division	dfo-nlbrn.for@kerala.gov.in	04931 220232	04931 220232

<b>Sl. No.</b>	<b>DESIGNATION</b>	<b>Email ID</b>	<b>Phone</b>	<b>Fax</b>
56	Divisional Forest officer, Nilambur (South) Division	dfo-nlbrs.for@kerala.gov.in	04931 220392	04931 220392
57	Divisional Forest officer, Mannarkad Division	dfo.mnkd.for@kerala.gov.in	04924 222574	
58	Divisional Forest officer, Palakkad Timber Sales Division	dfo-ts-plkd.for@kerala.gov.in	0491 2555800	
59	Divisional Forest officer, Kannur Division	dfo-knr.for@kerala.gov.in	0497 2704808	0497 2704808
60	Divisional Forest officer, Kozhikode Division	dfo.kozh.for@kerala.gov.in	0495 2374450	0495 2374450
61	Divisional Forest officer, Wayanad (North) Division	dfo-wyndn.for@kerala.gov.in	04935 240233	04935 246902
62	Divisional Forest officer, Wayanad (South) Division	dfo-wynds.for@kerala.gov.in	04936 203428	04936 2074469
63	Divisional Forest officer, Kozhikkode Timber Sales Division	dfo-ts-kzkd.for@kerala.gov.in	0495 2414702	
64	Principal, Kerala Forest School, Aripa	pr.arippa.for@kerala.gov.in	0475 2312080	
65	Principal, Kerala Forest School, Walayar	pr.wlyr.for@kerala.gov.in	0491 2862260	0491 2862260
66	Deputy Director, Periyar Tiger Reserve (East)	dd-ptr-east.for@kerala.gov.in	04869 222027	04869 223750
67	Deputy Director, Periyar Tiger Reserve (West)	dd-ptr-west.for@kerala.gov.in	04869 232010	04869 232010
68	Wildlife Warden, Thiruvananthapuram	ww-tvm.for@kerala.gov.in	0471 2360762	
69	Wildlife Warden, Idukki	ww-idk.for@kerala.gov.in	0486 2232271	0486 2232271
70	Wildlife Warden, Shendurney	ww-sdny.for@kerala.gov.in	0475 2344600	
71	Wildlife Warden, Eravikulam National Park	ww-mnr.for@kerala.gov.in	04865 231587	04865 231587
72	Wildlife Warden, Silent Valley National Park	ww-svnp.for@kerala.gov.in	0492 4222056	0492 4222056
73	Deputy Director, Parambikulam Tiger Reserve	ww-pklm.for@kerala.gov.in	04253 245005	
74	Wildlife Warden, Wayanad Wildlife Sanctuary	ww-wynd.for@kerala.gov.in	04936220454	
75	Wildlife Warden, Aralam Wildlife Sanctuary	ww-aralam.for@kerala.gov.in	0490 2493160	

<b>Sl. No.</b>	<b>DESIGNATION</b>	<b>Email ID</b>	<b>Phone</b>	<b>Fax</b>
76	Wildlife Warden, Peechi Wildlife Sanctuary	ww- peechi.for@kerala.gov.in	0487 2699017	
77	Deputy Conservator, Research (South) Division	dcf-res-s.for@kerala.gov.in	0471 2368909	0471 2365820
78	Deputy Conservator, Research (North) Thrissur	dcf-res-n.for@kerala.gov.in	0487 2334450	0487 2426915
79	Senior Administrative Officer	sao- admin.for@kerala.gov.in	04712321798	
80	Deputy Director (Statistics)	dd-stat.for@kerala.gov.in	0471 2529162	0471 2529162
81	Director, FIB	dir-fib.for@kerala.gov.in	04712320155	
82	Forest Veterinary Officer, Konni	fvo.for@kerala.gov.in	04682242386	04682242386
83	Assistant Director, Forest Mini Survey	asst-dir- fms.for@kerala.gov.in	04952418820	

#### Annexure 4

#### NAME AND ADDRESS OF STATE PUBLIC INFORMATION OFFICERS & APPELLATE AUTHORITIES UNDER RIGHT TO INFORMATION ACT

Sl. No.	State Public Information Officer	Appellate Authority
1	Deputy Conservator of Forests, O/o the Principal Chief Conservator of Forests, Thiruvananthapuram	Principal Chief Conservator of Forests
2	Asst. Conservator Forests, O/o the Addl. Principal Chief Conservator of Forests (WBP & FMIS), Thiruvananthapuram	Addl. Principal Chief Conservator of forests(WBP&FMIS), Thiruvananthapuram
3	Deputy Conservator of Forests, O/o the Principal Chief Conservator of Forests(Social Forestry), Thiruvananthapuram	Principal Chief Conservator of Forests (Social Forestry), Thiruvananthapuram
4	Asst. Conservator Forests, O/o the Addl Principal Chief Conservator of Forests(IHRD), PTP Nagar, Thiruvananthapuram	Addl. Principal Chief Conservator of Forests (IHRD), Thiruvananthapuram
5	Deputy Conservator of Forests (Prot), O/o the Chief Conservator of Forests(SA&NO), Thiruvananthapuram	Chief Conservator of Forests (SA&NO), Thiruvananthapuram
6	Deputy Conservator of Forests, O/o Principal Chief Conservator of Forests (Wildlife), Thiruvananthapuram	Principal Chief Conservator of Forests (Wildlife), and CWW, Thiruvananthapuram
7	Deputy Conservator of Forests (Co-ordination), O/o the Addl Principal Chief Conservator of Forests (Prot), Thiruvananthapuram	Addl. Principal Chief Conservator of Forests (Protection), Thiruvananthapuram
8	Sr. Administrative Officer, O/o the Addl. Principal Chief Conservator of Forests (Admn), Thiruvananthapuram	Addl. Principal Chief Conservator of Forests (Administration), Thiruvananthapuram
9	Deputy Conservator of Forests (D), O/o the Addl Principal Chief Conservator of Forests (D) , Thiruvananthapuram	Addl. Principal Chief Conservator of Forests (Development), Thiruvananthapuram
10	Asst. Conservator Forests, O/o the Addl. Principal Chief Conservator of Forests (E & TW), Thiruvananthapuram	Addl. Principal Chief Conservator of Forests ( Eco Development & Tribal Welfare) , Thiruvananthapuram
11	Deputy Conservator of Forests (Vig), O/o the Addl. Principal Chief Conservator of Forests (Vig), Thiruvananthapuram	Addl. Principal Chief Conservator of Forests (Vigilance), Thiruvananthapuram
12	Addl Principal Conservator of Forests (Bio-diversity Cell), O/o Addl. Principal Chief Conservator of Forests (Wildlife), Thiruvananthapuram	Principal Chief Conservator of Forests (Wildlife) and CWW, Thiruvananthapuram
13	Chief Conservator of Forests (WP&R), O/o Chief Conservator of Forests (WP&R), Thiruvananthapuram	Addl. Principal Chief Conservator of Forests (WP&R), Thiruvananthapuram



<b>Sl. No.</b>	<b>State Public Information Officer</b>	<b>Appellate Authority</b>
14	Chief Conservator of Forests (ABP), O/o Chief Conservator of Forests (ABP), Thiruvananthapuram	Principal Chief Conservator of Forests (Wildlife) and CWW, Thiruvananthapuram
15	Asst. Conservator Forests (TA), O/o the Addl. Principal Chief Conservator of Forests (SR), Kollam	Addl. Principal Chief Conservator of Forests (Southern Region), Kollam
16	Chief Conservator of Forests, Southern Circle, Kollam	Addl. Principal Chief Conservator of Forests (Southern Region), Kollam
17	Chief Conservator of Forests, Social Forestry, Kollam	Principal Chief Conservator of Forests (Social Forestry), Thiruvananthapuram
18	Chief Conservator of Forests, High Range Circle, Kottayam	Addl. Principal Chief Conservator of Forests (Southern Region), Kollam
19	Field Director, Project Tiger, Kottayam	Principal Chief Conservator of Forests (Wildlife) and CWW, Thiruvananthapuram
20	Conservator of Forests, Inspection & Evaluation, Kottayam	Addl. Principal Chief Conservator of Forests (Vigilance), Thiruvananthapuram
21	Asst. Conservator Forests (SF), O/o the Chief Conservator of Forests (SF), Ernakulam	Chief Conservator of Forests (Social Forestry), Ernakulam
22	Asst. Conservator Forests, O/o the Rehabilitation Commissioner, Thiruvananthapuram	Rehabilitation Commissioner, Thiruvananthapuram
23	Chief Conservator of Forests, Central Circle, Thrissur	Addl. Principal Chief Conservator of Forests (Northern Region), Kozhikode
24	Asst. Conservator Forests (TA), O/o the Addl Principal Chief Conservator of Forests (NR), Kozhikode	Addl. Principal Chief Conservator of Forests (Northern Region), Kozhikode
25	Conservator of Forests, Inspection & Evaluation, Kozhikode	Addl. Principal Chief Conservator of Forests (Vigilance), Thiruvananthapuram
26	Asst. Conservator Forests (SF), O/o the Chief Conservator of Forests (SF), Kozhikode	Chief Conservator of Forests (Social Forestry), Kozhikode
27	Chief Conservator of Forests, Eastern Circle, Palakkad	Addl. Principal Chief Conservator of Forests (Northern Region), Kozhikode
28	Chief Conservator of Forest, Wildlife, Palakkad	Principal Chief Conservator of Forests (Wildlife)and CWW, Thiruvananthapuram
29	Chief Conservator of Forests, Northern Circle, Kannur	Addl. Principal Chief Conservator of Forests (Northern Region), Kozhikode